



## Rhode Island Department of Labor and Training

# *Weekly Update of Claims Activity*

*Week Ending: September 22, 2012*

### *Unemployment Insurance*

**Initial Claims** – 1,364 initial claims were processed during the week ending 9/22/12, an increase of 165 from the previous week, and an increase of 104 from a year ago. The number of initial claims filed to date is down 3.7 percent from last year and down 8.2 percent from two years ago.

**Continued Claims** – 10,599 continued claims were processed during the week of 9/22/12, a decrease of 197 from the previous week and a decrease of 1,301 from a year ago. The number of continued claims filed to date is down 9.4 percent from last year and down 18.3 percent from two years ago.

**Workshare** – gives employers an alternative to layoffs by allowing employees to work reduced hours and collect a percentage of regular UI benefits to compensate for lost pay. This week, 46 initial claims and 702 continued claims were processed. An estimated 14 layoffs were prevented this week, as a result of Workshare.

**Emergency Unemployment Compensation 08** – EUC08, which became effective July 6, 2008, provides up to 53 weeks of federally funded benefits to eligible individuals who exhausted their UI claims. This week there were 292 new EUC08 claims processed and 8,725 continued claims processed (3,941 under tier I, 2,325 under tier II, 1,695 under tier III and 764 under tier IV).

**Exhaustions** – 324 individuals exhausted their regular payments this week, a decrease of 3 from a year ago. There were 132 individuals that exhausted EUC08.

### *Temporary Disability Insurance*

**Temporary Disability Insurance** – 1,031 initial claims and 7,419 continued claims were processed for Temporary Disability Insurance. The average weekly TDI payment is \$436 per week. Rhode Island is currently paying an average of 10.6 weeks per new claim.

	Initial Claims			Continued Claims	TOTAL - Initial and Continued Claims			
	Total	New	Additional		Current Week	Previous Week	Year Ago	Two Years Ago
<b>Total - All programs*</b>	1,915	1,280	635	20,437	22,352	22,499	29,991	35,816
<b>UI Claims</b>	1,364	941	423	10,599	11,963	11,995	13,160	14,467
Change from:								
Previous Week	165	377	-212	-197	-32			
Year Ago	104	160	-56	-1,301	-1,197			
Two Years Ago	161	214	-53	-2,665	-2,504			
<b>EUC08 Claims</b>	455	292	163	8,725	9,180	9,537	13,752	11,274
<b>Extended Benefits</b>	2	0	2	1	3	2	1,656	7,786
<b>Interstate-Liable</b>	48	38	10	410	458	465	503	608
<b>Workshare</b>	46	9	37	702	748	500	920	1,681
<b>Workshare Equivalency</b>	14	3	11	187	201	186	250	418
<b>UI Exhaustions</b>	-	-	-	324	324	327	412	446
<b>EUC08 Exhaustions</b>	-	-	-	132	132	133	234	260
<b>EB Exhaustions</b>	-	-	-	0	0	0	90	339
<b>TDI Claims</b>	1,031	845	186	7,419	8,450	9,264	8,643	8,661
Change from:								
Previous Week	-48	-60	12	-766	-814			
Year Ago	55	37	18	-248	-193			

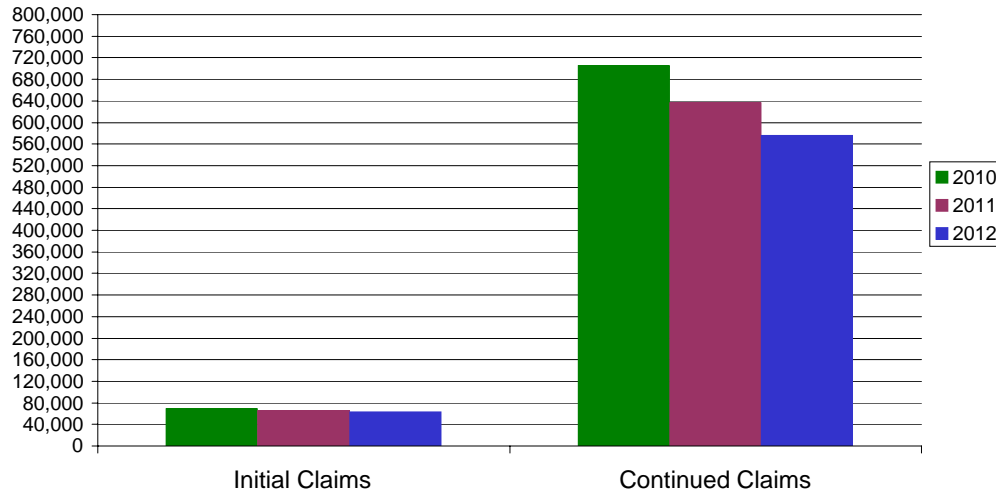
\* Includes UI, EUC08, EB, Workshare & Interstate Liable.

Equal Opportunity Employer / Program / Auxiliary aids and services available upon request to individuals with disabilities / TTY via RI Relay 711.

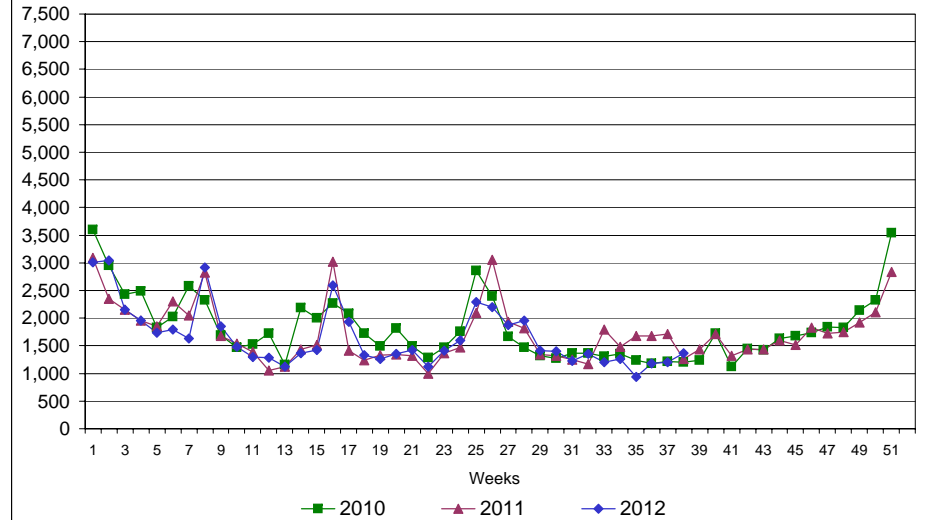
# Rhode Island Department of Labor and Training

## September 22, 2012

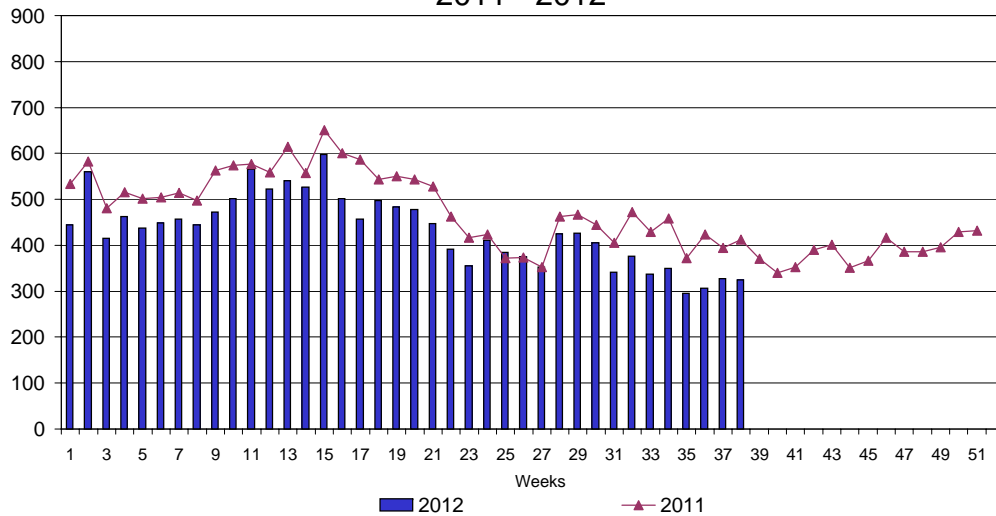
### UI Claims Comparison Year to Date



### UI Initial Claims 2010 - 2012



### UI Exhaustions 2011 - 2012



### TDI Claims Comparison Year to Date

