



Rhode Island Department of Labor and Training

Weekly Update of Claims Activity

Week Ending: September 29, 2012

Unemployment Insurance

Initial Claims – 1,299 initial claims were processed during the week ending 9/29/12, a decrease of 65 from the previous week, and a decrease of 136 from a year ago. The number of initial claims filed to date is down 3.8 percent from last year and down 8.0 percent from two years ago.

Continued Claims – 10,384 continued claims were processed during the week of 9/29/12, a decrease of 215 from the previous week and a decrease of 1,467 from a year ago. The number of continued claims filed to date is down 9.5 percent from last year and down 18.3 percent from two years ago.

Workshare – gives employers an alternative to layoffs by allowing employees to work reduced hours and collect a percentage of regular UI benefits to compensate for lost pay. This week, 53 initial claims and 757 continued claims were processed. An estimated 11 layoffs were prevented this week, as a result of Workshare.

Emergency Unemployment Compensation 08 – EUC08, which became effective July 6, 2008, provides up to 53 weeks of federally funded benefits to eligible individuals who exhausted their UI claims. This week there were 324 new EUC08 claims processed and 8,752 continued claims processed (3,916 under tier I, 2,308 under tier II, 1,756 under tier III and 772 under tier IV).

Exhaustions – 321 individuals exhausted their regular payments this week, a decrease of 3 from a year ago. There were 123 individuals that exhausted EUC08.

Temporary Disability Insurance

Temporary Disability Insurance – 509 initial claims and 6,926 continued claims were processed for Temporary Disability Insurance. The average weekly TDI payment is \$430 per week. Rhode Island is currently paying an average of 10.7 weeks per new claim.

	Initial Claims			Continued Claims	TOTAL - Initial and Continued Claims			
	Total	New	Additional		Current Week	Previous Week	Year Ago	Two Years Ago
Total - All programs*	1,921	1,172	749	20,311	22,232	22,352	30,262	35,677
UI Claims	1,299	795	504	10,384	11,683	11,963	13,286	14,082
Change from:								
Previous Week	-65	-146	81	-215	-280			
Year Ago	-136	-114	-22	-1,467	-1,603			
Two Years Ago	60	75	-15	-2,459	-2,399			
EUC08 Claims	533	324	209	8,752	9,285	9,180	13,735	11,573
Extended Benefits	2	1	1	2	4	3	1,687	7,391
Interstate-Liable	34	21	13	416	450	458	532	546
Workshare	53	31	22	757	810	748	1,022	2,085
Workshare Equivalency	11	6	5	212	223	201	272	517
UI Exhaustions	-	-	-	321	321	324	371	442
EUC08 Exhaustions	-	-	-	123	123	132	241	243
EB Exhaustions	-	-	-	2	2	0	95	354
TDI Claims	509	414	95	6,926	7,435	8,450	7,795	9,084
Change from:								
Previous Week	-522	-431	-91	-493	-1,015			
Year Ago	-350	-304	-46	-10	-360			

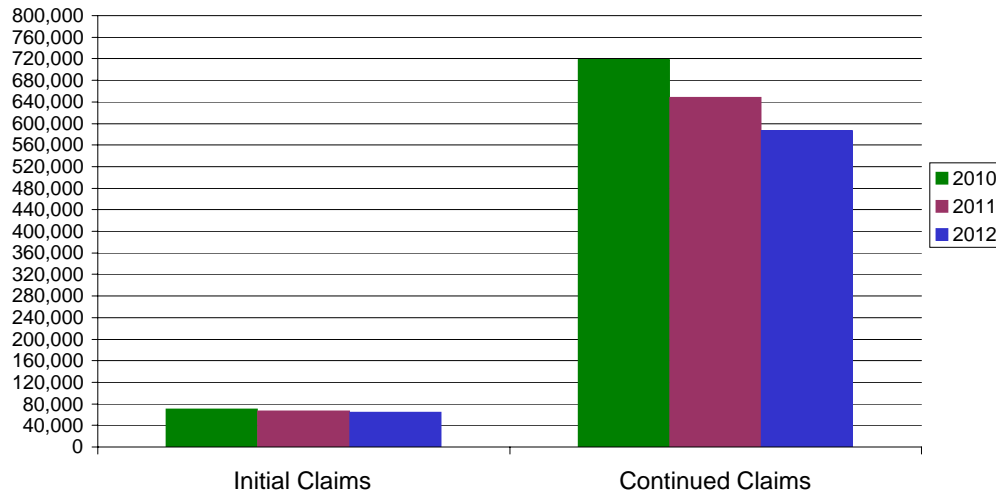
* Includes UI, EUC08, EB, Workshare & Interstate Liable.

Equal Opportunity Employer / Program / Auxiliary aids and services available upon request to individuals with disabilities / TTY via RI Relay 711.

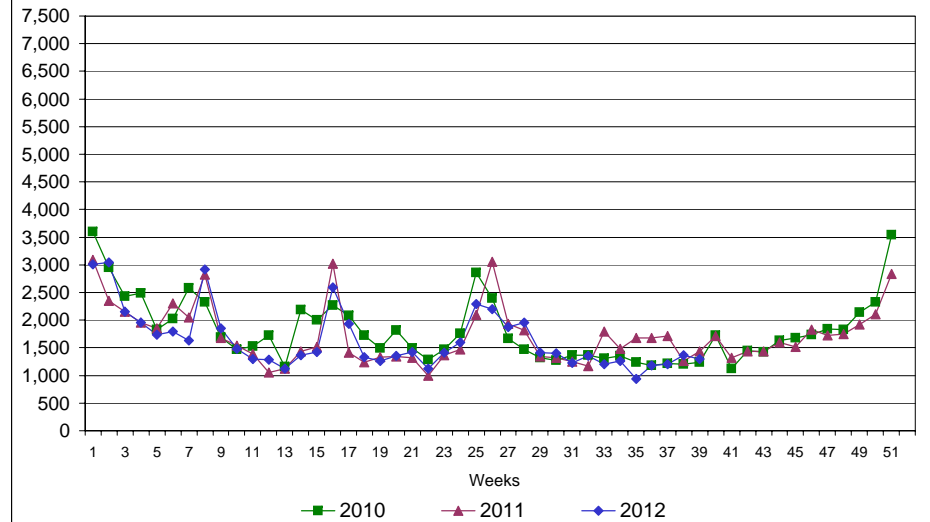
Rhode Island Department of Labor and Training

September 29, 2012

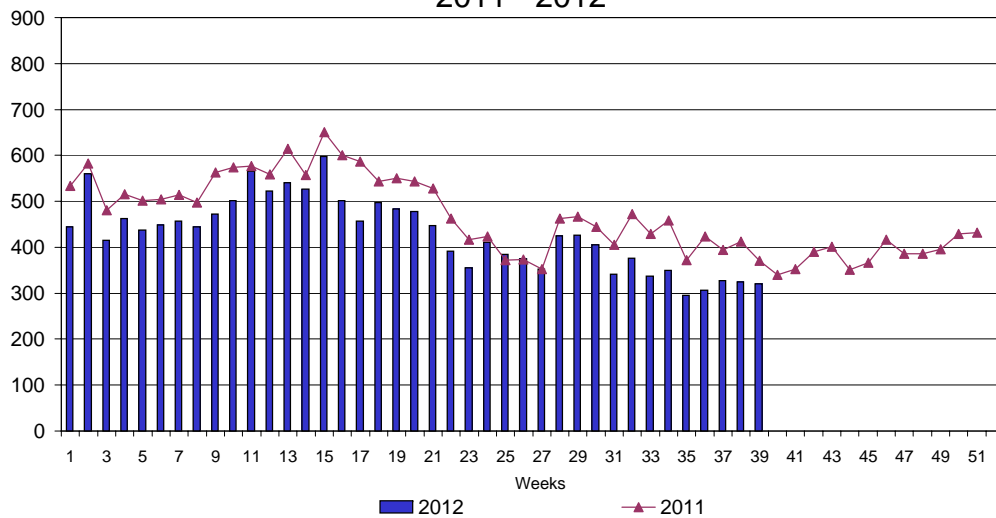
UI Claims Comparison Year to Date



UI Initial Claims 2010 - 2012



UI Exhaustions 2011 - 2012



TDI Claims Comparison Year to Date

