



Rhode Island Department of Labor and Training

Weekly Update of Claims Activity

Week Ending: October 6, 2012

Unemployment Insurance

Initial Claims – 1,243 initial claims were processed during the week ending 10/6/12, a decrease of 56 from the previous week, and a decrease of 467 from a year ago. The number of initial claims filed to date is down 4.4 percent from last year and down 8.5 percent from two years ago.

Continued Claims – 10,297 continued claims were processed during the week of 10/6/12, a decrease of 87 from the previous week and a decrease of 1,347 from a year ago. The number of continued claims filed to date is down 9.5 percent from last year and down 18.3 percent from two years ago.

Workshare – gives employers an alternative to layoffs by allowing employees to work reduced hours and collect a percentage of regular UI benefits to compensate for lost pay. This week, 126 initial claims and 1,185 continued claims were processed. An estimated 29 layoffs were prevented this week, as a result of Workshare.

Emergency Unemployment Compensation 08 – EUC08, which became effective July 6, 2008, provides up to 53 weeks of federally funded benefits to eligible individuals who exhausted their UI claims. This week there were 305 new EUC08 claims processed and 8,790 continued claims processed (3,906 under tier I, 2,350 under tier II, 1,745 under tier III and 789 under tier IV).

Exhaustions – 295 individuals exhausted their regular payments this week, a decrease of 26 from a year ago. There were 114 individuals that exhausted EUC08.

Temporary Disability Insurance

Temporary Disability Insurance – 837 initial claims and 8,170 continued claims were processed for Temporary Disability Insurance. The average weekly TDI payment is \$435 per week. Rhode Island is currently paying an average of 10.7 weeks per new claim.

	Initial Claims			Continued Claims	TOTAL - Initial and Continued Claims			
	Total	New	Additional		Current Week	Previous Week	Year Ago	Two Years Ago
Total - All programs*	1,904	1,202	702	20,776	22,680	22,232	29,994	35,990
UI Claims	1,243	773	470	10,297	11,540	11,683	13,354	14,665
Change from:								
Previous Week	-56	-22	-34	-87	-143			
Year Ago	-467	-400	-67	-1,347	-1,814			
Two Years Ago	-477	-368	-109	-2,648	-3,125			
EUC08 Claims	502	305	197	8,790	9,292	9,285	13,501	11,763
Extended Benefits	2	0	2	2	4	4	1,670	7,131
Interstate-Liable	31	18	13	502	533	450	473	543
Workshare	126	106	20	1,185	1,311	810	996	1,888
Workshare Equivalency	29	25	4	327	356	223	258	416
UI Exhaustions	-	-	-	295	295	321	340	584
EUC08 Exhaustions	-	-	-	114	114	123	216	236
EB Exhaustions	-	-	-	0	0	2	114	376
TDI Claims	837	679	158	8,170	9,007	7,435	8,473	9,201
Change from:								
Previous Week	328	265	63	1,244	1,572			
Year Ago	87	58	29	447	534			

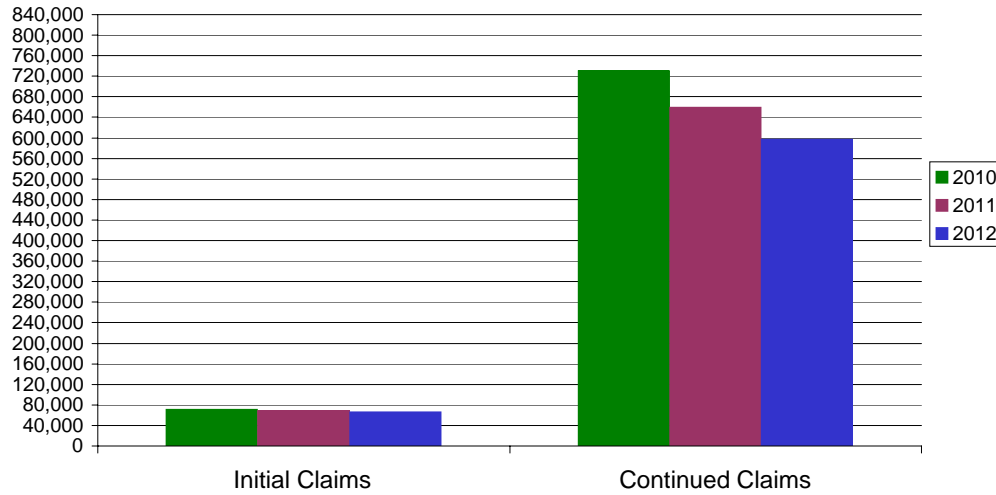
* Includes UI, EUC08, EB, Workshare & Interstate Liable.

Equal Opportunity Employer / Program / Auxiliary aids and services available upon request to individuals with disabilities / TTY via RI Relay 711.

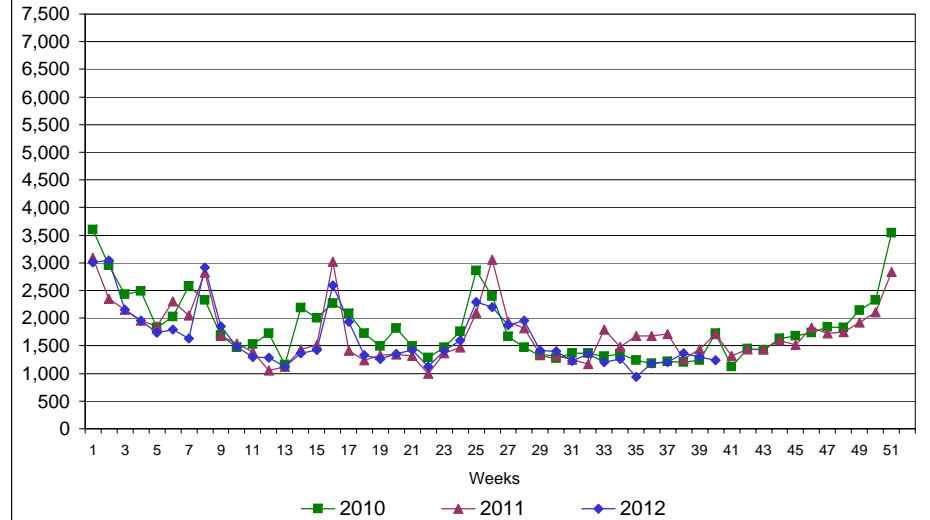
Rhode Island Department of Labor and Training

October 6, 2012

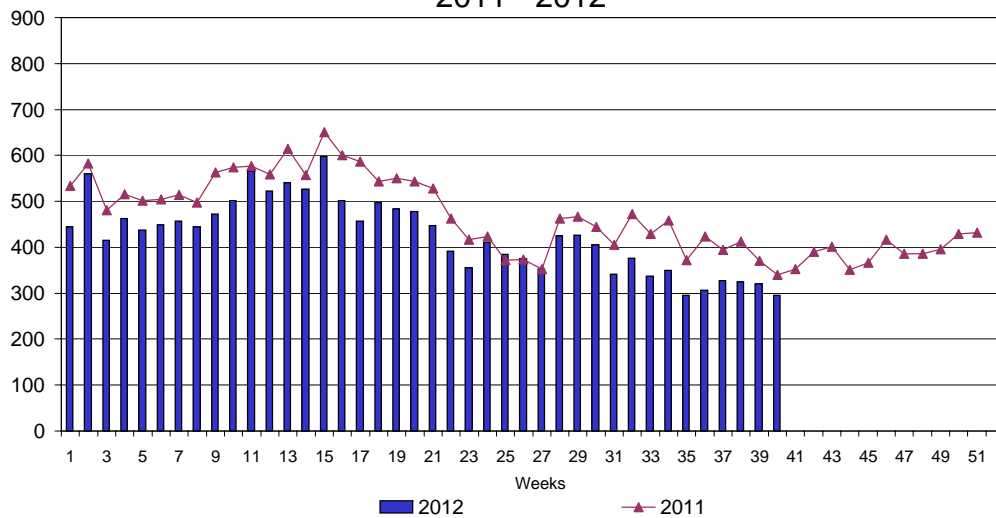
UI Claims Comparison Year to Date



UI Initial Claims 2010 - 2012



UI Exhaustions 2011 - 2012



TDI Claims Comparison Year to Date

