



Rhode Island Department of Labor and Training

Weekly Update of Claims Activity

Week Ending: October 20, 2012

Unemployment Insurance

Initial Claims – 1,298 initial claims were processed during the week ending 10/20/12, an increase of 27 from the previous week, and a decrease of 140 from a year ago. The number of initial claims filed to date is down 4.5 percent from last year and down 8.2 percent from two years ago.

Continued Claims – 10,638 continued claims were processed during the week of 10/20/12, an increase of 575 from the previous week and a decrease of 1,112 from a year ago. The number of continued claims filed to date is down 9.6 percent from last year and down 18.4 percent from two years ago.

Workshare – gives employers an alternative to layoffs by allowing employees to work reduced hours and collect a percentage of regular UI benefits to compensate for lost pay. This week, 59 initial claims and 734 continued claims were processed. An estimated 14 layoffs were prevented this week, as a result of Workshare.

Emergency Unemployment Compensation 08 – EUC08, which became effective July 6, 2008, provides up to 53 weeks of federally funded benefits to eligible individuals who exhausted their UI claims. This week there were 375 new EUC08 claims processed and 8,593 continued claims processed (3,773 under tier I, 2,269 under tier II, 1,690 under tier III and 861 under tier IV).

Exhaustions – 282 individuals exhausted their regular payments this week, a decrease of 55 from a year ago. There were 57 individuals that exhausted EUC08.

Temporary Disability Insurance

Temporary Disability Insurance – 965 initial claims and 6,579 continued claims were processed for Temporary Disability Insurance. The average weekly TDI payment is \$434 per week. Rhode Island is currently paying an average of 10.6 weeks per new claim.

	Initial Claims			Continued Claims	TOTAL - Initial and Continued Claims			
	Total	New	Additional		Current Week	Previous Week	Year Ago	Two Years Ago
Total - All programs*	1,957	1,259	698	20,379	22,336	21,391	27,944	28,841
UI Claims	1,298	827	471	10,638	11,936	11,334	13,188	14,452
Change from:								
Previous Week	27	21	6	575	602			
Year Ago	-140	-74	-66	-1,112	-1,252			
Two Years Ago	-152	-152	0	-2,364	-2,516			
EUC08 Claims	573	375	198	8,593	9,166	9,034	13,391	12,218
Interstate-Liable	27	12	15	414	441	450	501	572
Workshare	59	45	14	734	793	573	864	1,599
Workshare Equivalency	14	10	4	237	251	161	228	369
UI Exhaustions	-	-	-	282	282	337	390	424
EUC08 Exhaustions	-	-	-	57	57	69	225	167
TDI Claims	965	820	145	6,579	7,544	6,837	8,192	8,329
Change from:								
Previous Week	361	327	34	346	707			
Year Ago	234	202	32	-882	-648			

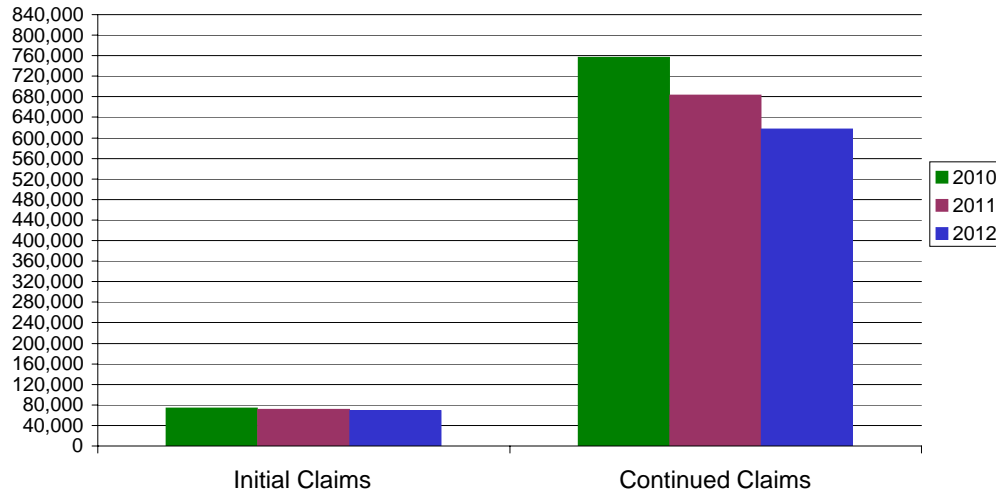
* Includes UI, EUC08, EB, Workshare & Interstate Liable.

Equal Opportunity Employer / Program / Auxiliary aids and services available upon request to individuals with disabilities / TTY via RI Relay 711.

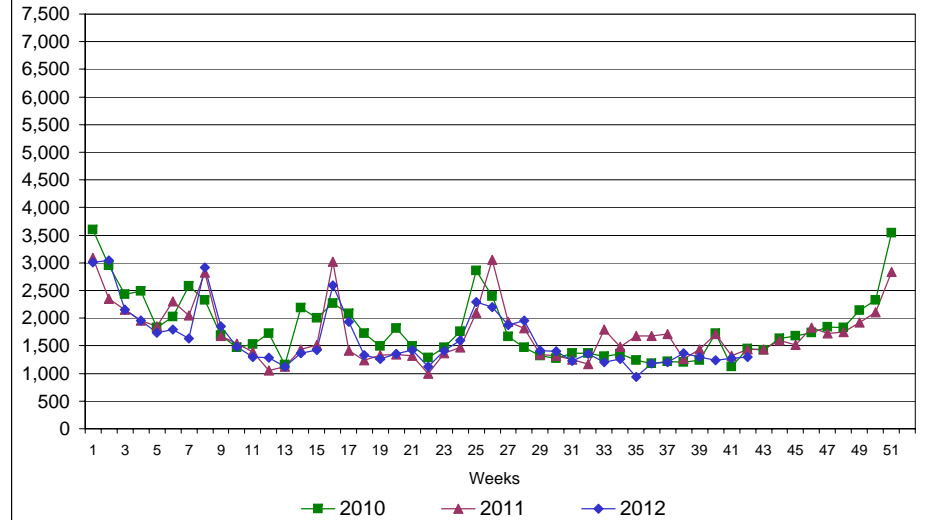
Rhode Island Department of Labor and Training

October 20, 2012

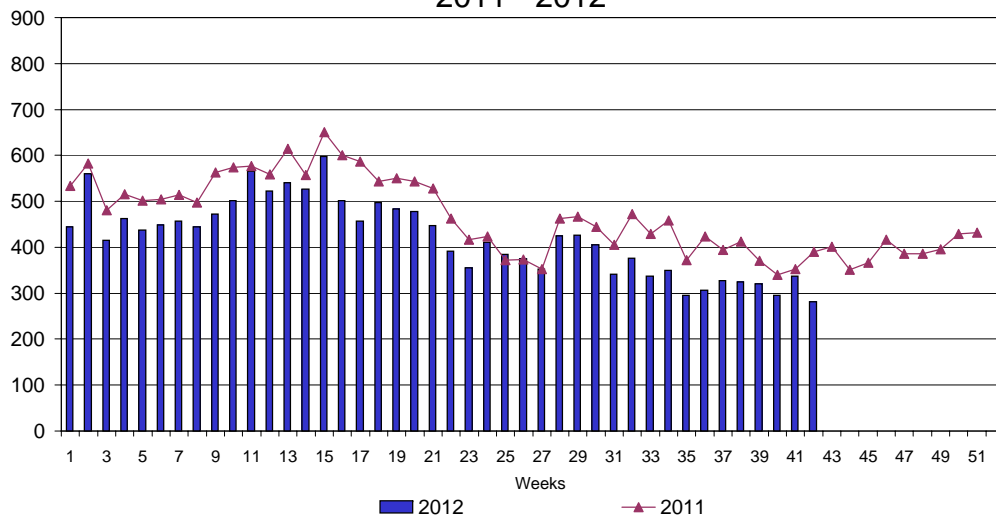
UI Claims Comparison Year to Date



UI Initial Claims 2010 - 2012



UI Exhaustions 2011 - 2012



TDI Claims Comparison Year to Date

