



Rhode Island Department of Labor and Training

Weekly Update of Claims Activity

Week Ending: October 27, 2012

Unemployment Insurance

Initial Claims – 1,422 initial claims were processed during the week ending 10/27/12, an increase of 124 from the previous week, and a decrease of 13 from a year ago. The number of initial claims filed to date is down 4.4 percent from last year and down 8.0 percent from two years ago.

Continued Claims – 10,605 continued claims were processed during the week of 10/27/12, a decrease of 33 from the previous week and a decrease of 1,417 from a year ago. The number of continued claims filed to date is down 9.6 percent from last year and down 18.4 percent from two years ago.

Workshare – gives employers an alternative to layoffs by allowing employees to work reduced hours and collect a percentage of regular UI benefits to compensate for lost pay. This week, 80 initial claims and 606 continued claims were processed. An estimated 17 layoffs were prevented this week, as a result of Workshare.

Emergency Unemployment Compensation 08 – EUC08, which became effective July 6, 2008, provides up to 53 weeks of federally funded benefits to eligible individuals who exhausted their UI claims. This week there were 309 new EUC08 claims processed and 8,877 continued claims processed (3,870 under tier I, 2,314 under tier II, 1,692 under tier III and 1,001 under tier IV).

Exhaustions – 294 individuals exhausted their regular payments this week, an increase of 12 from a year ago. There were 71 individuals that exhausted EUC08.

Temporary Disability Insurance

Temporary Disability Insurance – 646 initial claims and 8,000 continued claims were processed for Temporary Disability Insurance. The average weekly TDI payment is \$440 per week. Rhode Island is currently paying an average of 10.7 weeks per new claim.

	Initial Claims			Continued Claims	TOTAL - Initial and Continued Claims			
	Total	New	Additional		Current Week	Previous Week	Year Ago	Two Years Ago
Total - All programs*	2,086	1,330	756	20,567	22,653	22,336	28,259	29,763
UI Claims	1,422	913	509	10,605	12,027	11,936	13,457	14,788
Change from:								
Previous Week	124	86	38	-33	91			
Year Ago	-13	95	-108	-1,417	-1,430			
Two Years Ago	4	33	-29	-2,765	-2,761			
EUC08 Claims	530	309	221	8,877	9,407	9,166	13,428	12,568
Interstate-Liable	54	39	15	479	533	441	523	565
Workshare	80	69	11	606	686	793	851	1,842
Workshare Equivalency	17	14	3	142	159	251	226	447
UI Exhaustions	-	-	-	294	294	282	401	410
EUC08 Exhaustions	-	-	-	71	71	57	259	97
TDI Claims	646	524	122	8,000	8,646	7,544	8,436	8,103
Change from:								
Previous Week	-319	-296	-23	1,421	1,102			
Year Ago	-185	-168	-17	395	210			

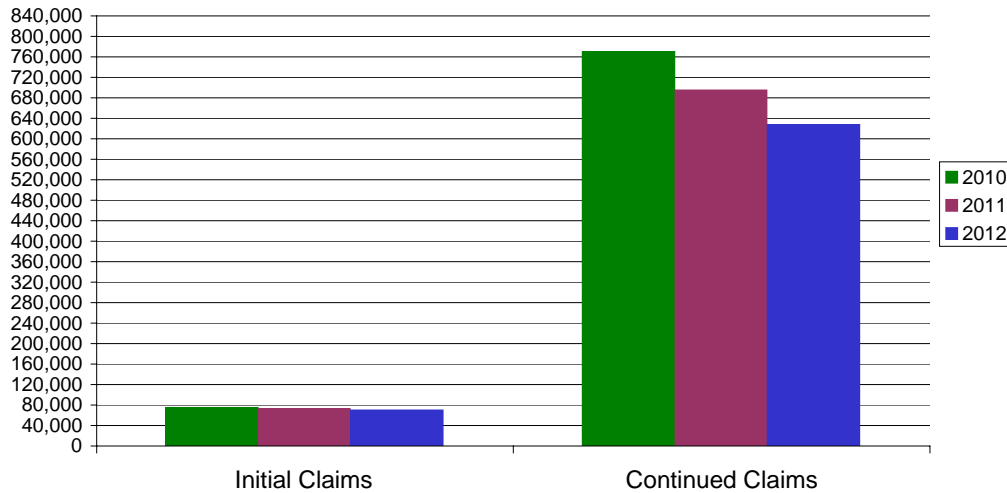
* Includes UI, EUC08, EB, Workshare & Interstate Liable.

Equal Opportunity Employer / Program / Auxiliary aids and services available upon request to individuals with disabilities / TTY via RI Relay 711.

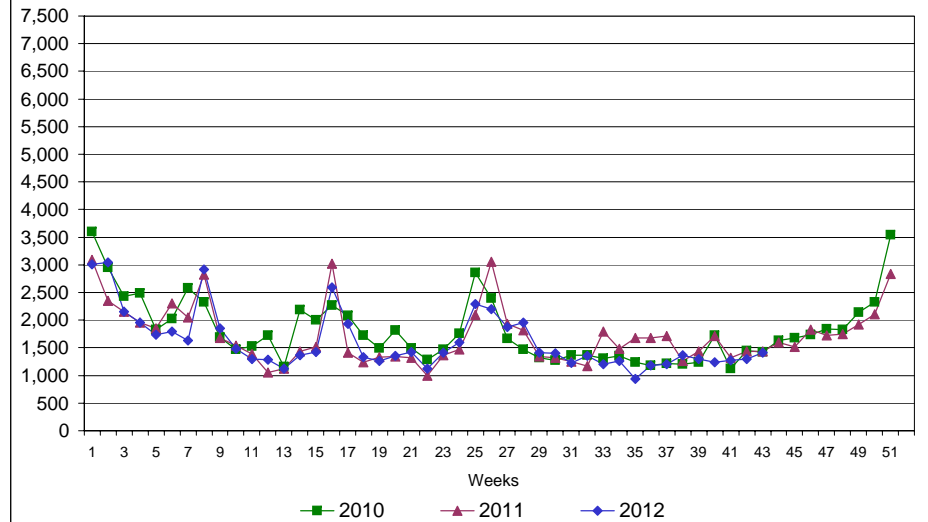
Rhode Island Department of Labor and Training

October 27, 2012

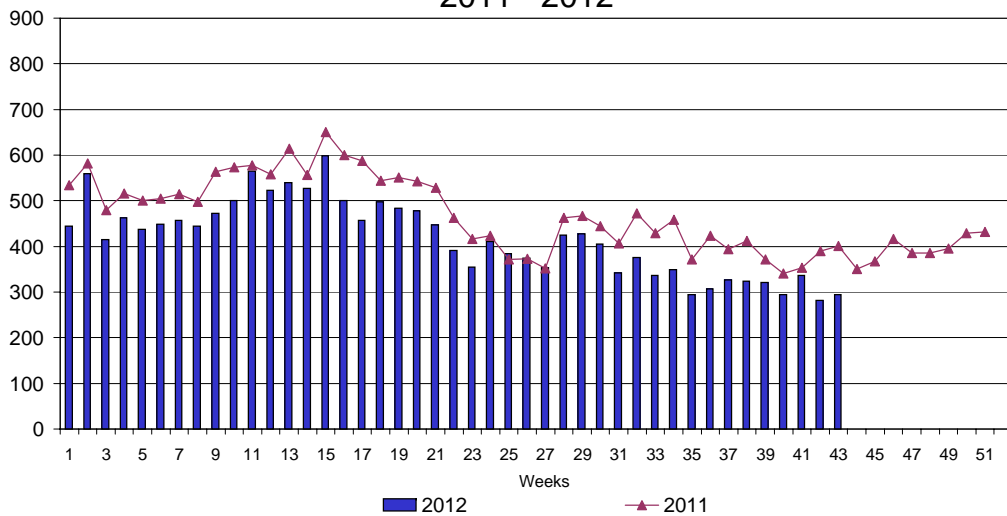
UI Claims Comparison Year to Date



UI Initial Claims 2010 - 2012



UI Exhaustions 2011 - 2012



TDI Claims Comparison Year to Date

