



Rhode Island Department of Labor and Training

Weekly Update of Claims Activity

Week Ending: November 3, 2012

Unemployment Insurance

Initial Claims – 1,775 initial claims were processed during the week ending 11/3/12, an increase of 353 from the previous week, and an increase of 182 from a year ago. The number of initial claims filed to date is down 4.1 percent from last year and down 7.7 percent from two years ago.

Continued Claims – 10,246 continued claims were processed during the week of 11/3/12, a decrease of 359 from the previous week and a decrease of 2,483 from a year ago. The number of continued claims filed to date is down 9.8 percent from last year and down 18.5 percent from two years ago.

Workshare – gives employers an alternative to layoffs by allowing employees to work reduced hours and collect a percentage of regular UI benefits to compensate for lost pay. This week, 7 initial claims and 533 continued claims were processed. An estimated 2 layoffs were prevented this week, as a result of Workshare.

Emergency Unemployment Compensation 08 – EUC08, which became effective July 6, 2008, provides up to 53 weeks of federally funded benefits to eligible individuals who exhausted their UI claims. This week there were 188 new EUC08 claims processed and 8,537 continued claims processed (3,656 under tier I, 2,191 under tier II, 1,631 under tier III and 1,059 under tier IV).

Exhaustions – 319 individuals exhausted their regular payments this week, an increase of 25 from a year ago. There were 51 individuals that exhausted EUC08.

Temporary Disability Insurance

Temporary Disability Insurance – 714 initial claims and 5,280 continued claims were processed for Temporary Disability Insurance. The average weekly TDI payment is \$443 per week. Rhode Island is currently paying an average of 10.7 weeks per new claim.

| | <u>Initial Claims</u> | | | <u>Continued Claims</u> | <u>TOTAL - Initial and Continued Claims</u> | | | |
|------------------------------|-----------------------|------------|-------------------|-------------------------|---|----------------------|-----------------|----------------------|
| | <u>Total</u> | <u>New</u> | <u>Additional</u> | | <u>Current Week</u> | <u>Previous Week</u> | <u>Year Ago</u> | <u>Two Years Ago</u> |
| Total - All programs* | 2,140 | 1,172 | 968 | 19,744 | 21,884 | 22,653 | 29,457 | 30,475 |
| UI Claims | 1,775 | 967 | 808 | 10,246 | 12,021 | 12,027 | 14,322 | 14,988 |
| Change from: | | | | | | | | |
| Previous Week | 353 | 54 | 299 | -359 | -6 | | | |
| Year Ago | 182 | 4 | 178 | -2,483 | -2,301 | | | |
| Two Years Ago | 141 | -7 | 148 | -3,108 | -2,967 | | | |
| EUC08 Claims | 331 | 188 | 143 | 8,537 | 8,868 | 9,407 | 13,585 | 13,130 |
| Interstate-Liable | 27 | 17 | 10 | 428 | 455 | 533 | 561 | 596 |
| Workshare | 7 | 0 | 7 | 533 | 540 | 686 | 989 | 1,761 |
| Workshare Equivalency | 2 | 0 | 2 | 135 | 137 | 159 | 244 | 415 |
| UI Exhaustions | - | - | - | 319 | 319 | 294 | 351 | 416 |
| EUC08 Exhaustions | - | - | - | 51 | 51 | 71 | 261 | 127 |
| TDI Claims | 714 | 601 | 113 | 5,280 | 5,994 | 8,646 | 7,829 | 7,958 |
| Change from: | | | | | | | | |
| Previous Week | 68 | 77 | -9 | -2,720 | -2,652 | | | |
| Year Ago | -164 | -116 | -48 | -1,671 | -1,835 | | | |

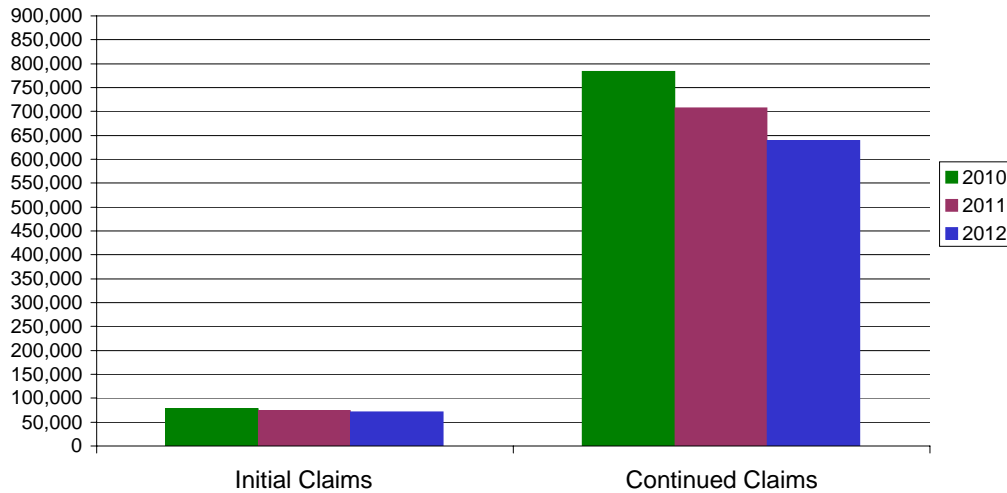
* Includes UI, EUC08, EB, Workshare & Interstate Liable.

Equal Opportunity Employer / Program / Auxiliary aids and services available upon request to individuals with disabilities / TTY via RI Relay 711.

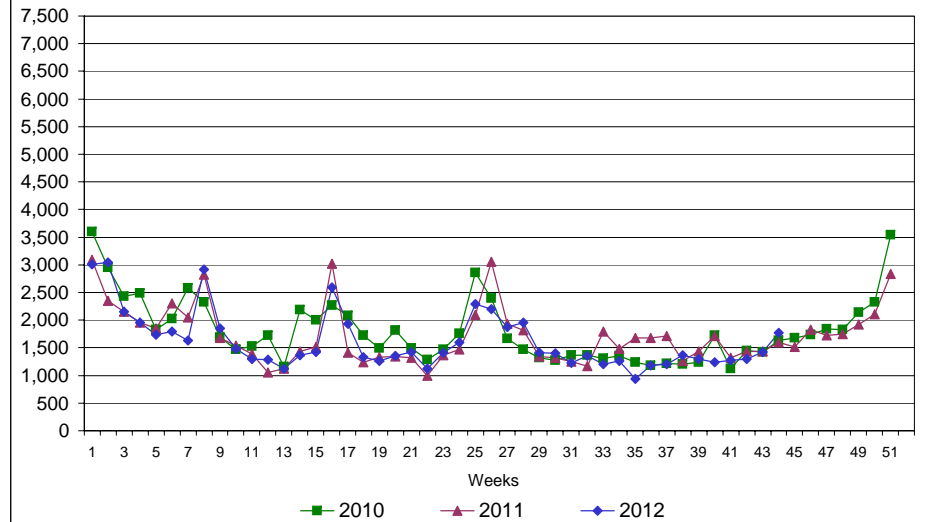
Rhode Island Department of Labor and Training

November 3, 2012

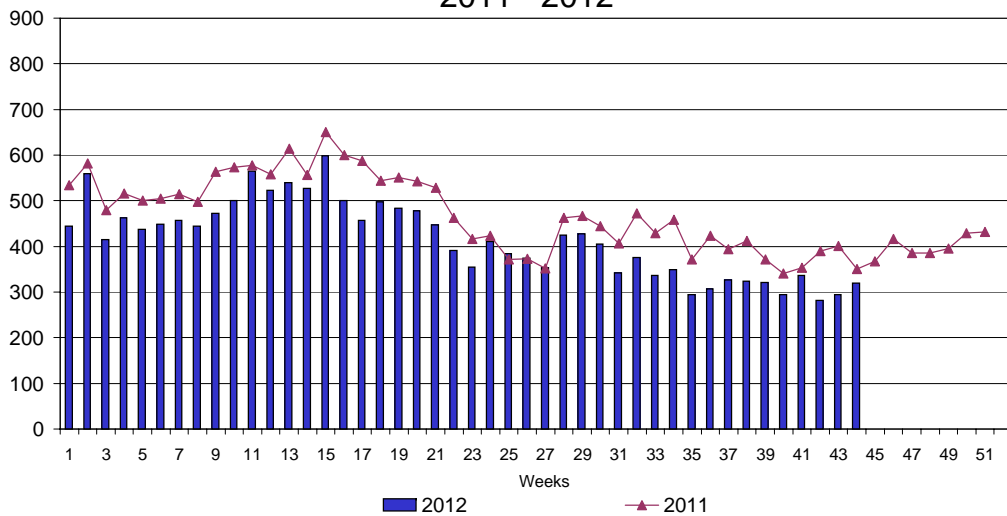
UI Claims Comparison Year to Date



UI Initial Claims 2010 - 2012



UI Exhaustions 2011 - 2012



TDI Claims Comparison Year to Date

