



## *Rhode Island Department of Labor and Training*

# *Weekly Update of Claims Activity*

*Week Ending: November 10, 2012*

### *Unemployment Insurance*

**Initial Claims** – 2,055 initial claims were processed during the week ending 11/10/12, an increase of 280 from the previous week, and an increase of 542 from a year ago. The number of initial claims filed to date is down 3.3 percent from last year and down 7.0 percent from two years ago. Approximately 300 of the claims filed this week are attributed to Hurricane Sandy which affected Rhode Island October 29<sup>th</sup> and 30<sup>th</sup>.

**Continued Claims** – 10,777 continued claims were processed during the week of 11/10/12, an increase of 531 from the previous week and a decrease of 1,810 from a year ago. The number of continued claims filed to date is down 9.9 percent from last year and down 18.5 percent from two years ago.

**Workshare** – gives employers an alternative to layoffs by allowing employees to work reduced hours and collect a percentage of regular UI benefits to compensate for lost pay. This week, 16 initial claims and 496 continued claims were processed. An estimated 5 layoffs were prevented this week, as a result of Workshare.

**Emergency Unemployment Compensation 08** – EUC08, which became effective July 6, 2008, provides up to 53 weeks of federally funded benefits to eligible individuals who exhausted their UI claims. This week there were 264 new EUC08 claims processed and 8,647 continued claims processed (3,635 under tier I, 2,245 under tier II, 1,595 under tier III and 1,172 under tier IV).

**Exhaustions** – 353 individuals exhausted their regular payments this week, an increase of 34 from a year ago. There were 94 individuals that exhausted EUC08.

### *Temporary Disability Insurance*

**Temporary Disability Insurance** – 911 initial claims and 8,394 continued claims were processed for Temporary Disability Insurance. The average weekly TDI payment is \$438 per week. Rhode Island is currently paying an average of 10.7 weeks per new claim.

	Initial Claims			Continued Claims	TOTAL - Initial and Continued Claims			
	Total	New	Additional		Current Week	Previous Week	Year Ago	Two Years Ago
<b>Total - All programs*</b>	2,595	1,535	1,060	20,385	22,980	21,884	29,033	30,610
<b>UI Claims</b>	2,055	1,234	821	10,777	12,832	12,021	14,100	14,654
Change from:								
Previous Week	280	267	13	531	811			
Year Ago	542	242	300	-1,810	-1,268			
Two Years Ago	377	224	153	-2,199	-1,822			
<b>EUC08 Claims</b>	482	264	218	8,647	9,129	8,868	13,225	13,763
<b>Interstate-Liable</b>	42	24	18	465	507	455	574	611
<b>Workshare</b>	16	13	3	496	512	540	1,134	1,582
<b>Workshare Equivalency</b>	5	4	1	155	160	137	283	390
<b>UI Exhaustions</b>	-	-	-	353	353	319	367	439
<b>EUC08 Exhaustions</b>	-	-	-	94	94	51	201	115
<b>TDI Claims</b>	911	751	160	8,394	9,305	5,994	7,819	8,412
Change from:								
Previous Week	197	150	47	3,114	3,311			
Year Ago	328	291	37	1,158	1,486			

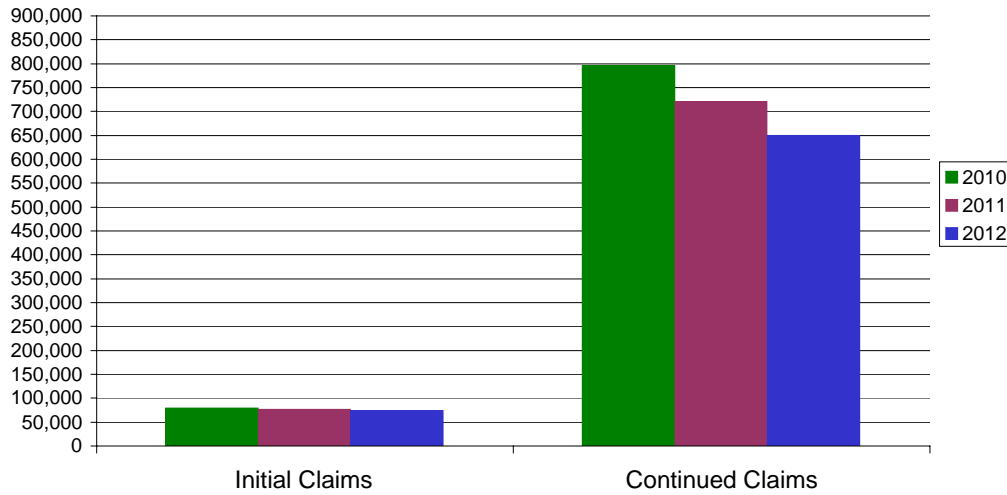
\* Includes UI, EUC08, EB, Workshare & Interstate Liable.

Equal Opportunity Employer / Program / Auxiliary aids and services available upon request to individuals with disabilities / TTY via RI Relay 711.

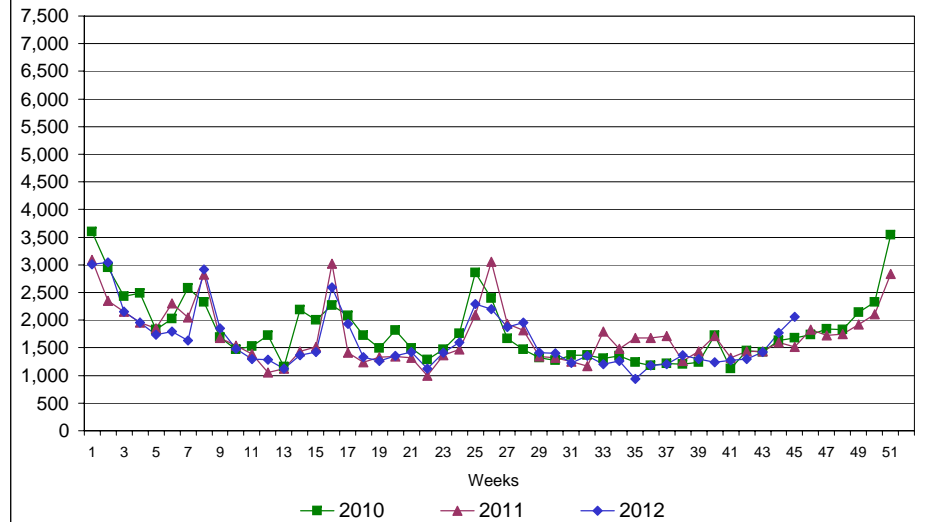
# Rhode Island Department of Labor and Training

## November 10, 2012

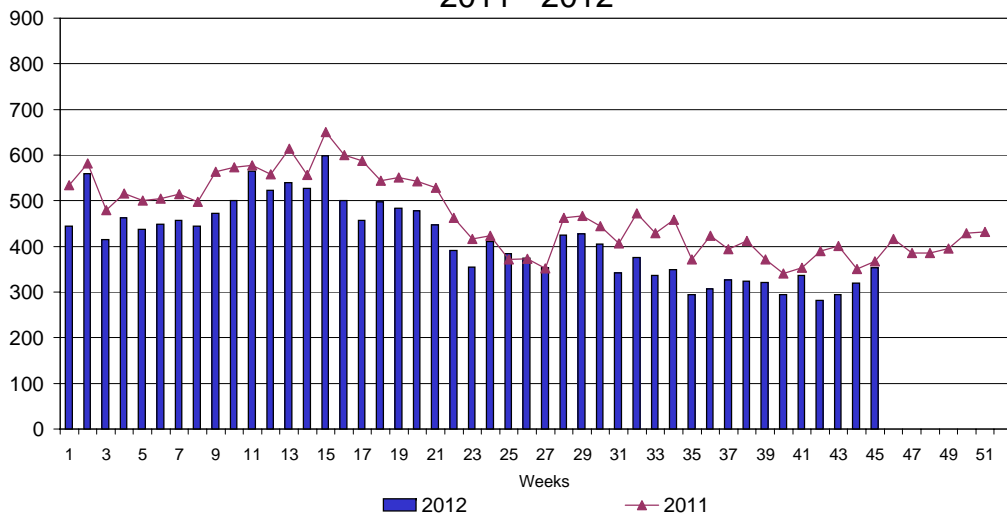
### UI Claims Comparison Year to Date



### UI Initial Claims 2010 - 2012



### UI Exhaustions 2011 - 2012



### TDI Claims Comparison Year to Date

