



Rhode Island Department of Labor and Training

Weekly Update of Claims Activity

Week Ending: November 17, 2012

Unemployment Insurance

Initial Claims – 1,490 initial claims were processed during the week ending 11/17/12, a decrease of 565 from the previous week, and a decrease of 344 from a year ago. The number of initial claims filed to date is down 3.7 percent from last year and down 7.2 percent from two years ago.

Continued Claims – 11,136 continued claims were processed during the week of 11/17/12, an increase of 359 from the previous week and a decrease of 2,033 from a year ago. The number of continued claims filed to date is down 10.0 percent from last year and down 18.5 percent from two years ago.

Workshare – gives employers an alternative to layoffs by allowing employees to work reduced hours and collect a percentage of regular UI benefits to compensate for lost pay. This week, 48 initial claims and 596 continued claims were processed. An estimated 13 layoffs were prevented this week, as a result of Workshare.

Emergency Unemployment Compensation 08 – EUC08, which became effective July 6, 2008, provides up to 53 weeks of federally funded benefits to eligible individuals who exhausted their UI claims. This week there were 336 new EUC08 claims processed and 8,761 continued claims processed (3,684 under tier I, 2,289 under tier II, 1,544 under tier III and 1,244 under tier IV).

Exhaustions – 358 individuals exhausted their regular payments this week, an increase of 5 from a year ago. There were 161 individuals that exhausted EUC08.

Temporary Disability Insurance

Temporary Disability Insurance – 658 initial claims and 5,994 continued claims were processed for Temporary Disability Insurance. The average weekly TDI payment is \$439 per week. Rhode Island is currently paying an average of 10.7 weeks per new claim.

	Initial Claims			Continued Claims	TOTAL - Initial and Continued Claims			
	Total	New	Additional		Current Week	Previous Week	Year Ago	Two Years Ago
Total - All programs*	2,146	1,339	807	20,952	23,098	22,980	30,964	32,838
UI Claims	1,490	946	544	11,136	12,626	12,832	15,003	15,617
Change from:								
Previous Week	-565	-288	-277	359	-206			
Year Ago	-344	-103	-241	-2,033	-2,377			
Two Years Ago	-245	-133	-112	-2,746	-2,991			
EUC08 Claims	569	336	233	8,761	9,330	9,129	13,512	14,493
Interstate-Liable	39	27	12	459	498	507	596	651
Workshare	48	30	18	596	644	512	1,853	2,077
Workshare Equivalency	13	8	5	149	162	160	438	498
UI Exhaustions	-	-	-	358	358	353	417	442
EUC08 Exhaustions	-	-	-	161	161	94	256	122
TDI Claims	658	529	129	5,994	6,652	9,305	8,394	8,346
Change from:								
Previous Week	-253	-222	-31	-2,400	-2,653			
Year Ago	-187	-174	-13	-1,555	-1,742			

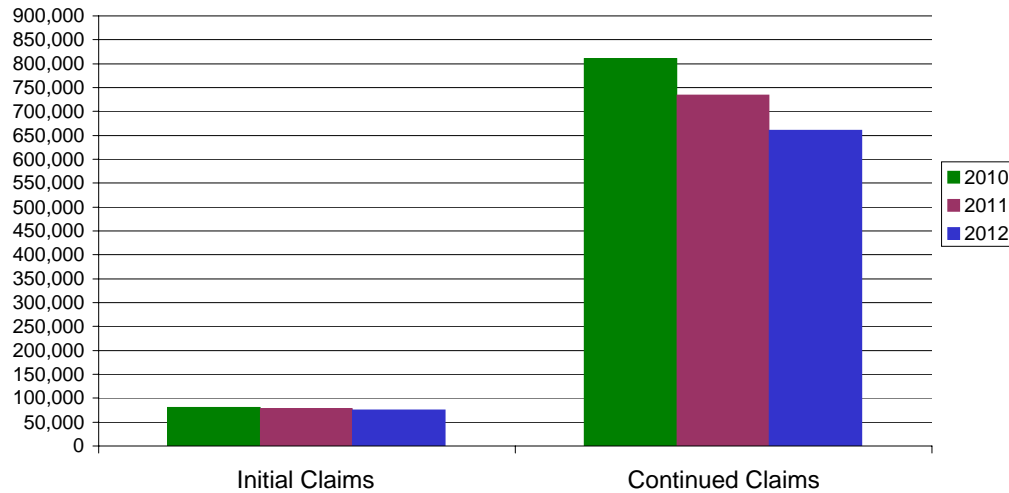
* Includes UI, EUC08, EB, Workshare & Interstate Liable.

Equal Opportunity Employer / Program / Auxiliary aids and services available upon request to individuals with disabilities / TTY via RI Relay 711.

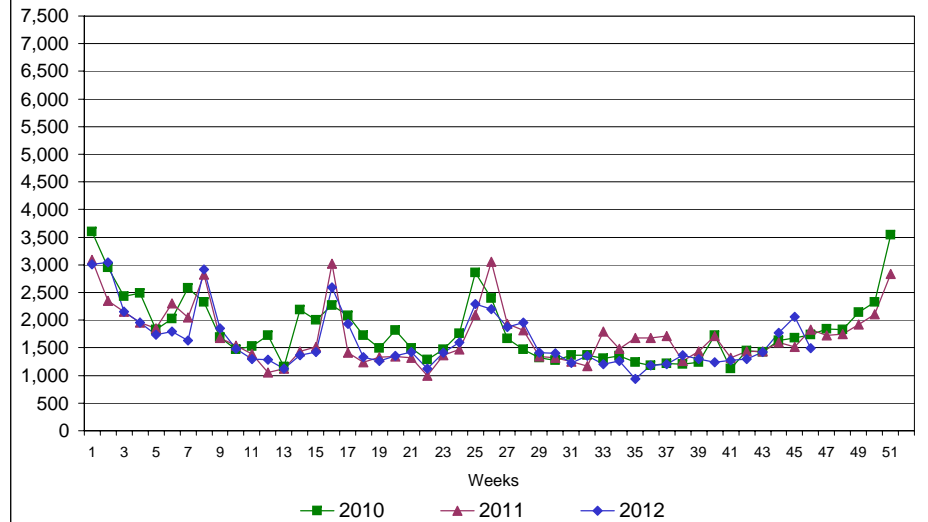
Rhode Island Department of Labor and Training

November 17, 2012

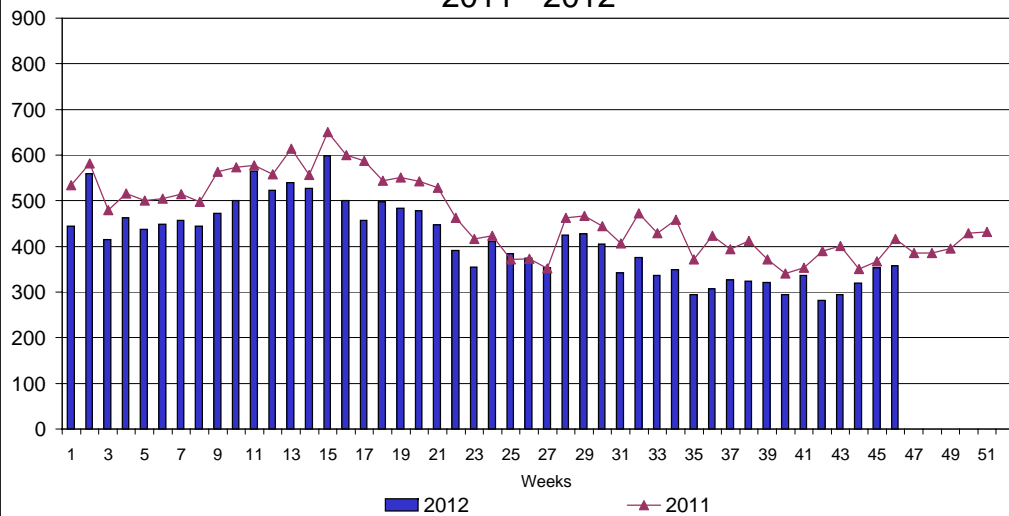
UI Claims Comparison Year to Date



UI Initial Claims 2010 - 2012



UI Exhaustions 2011 - 2012



TDI Claims Comparison Year to Date

