



Rhode Island Department of Labor and Training

Weekly Update of Claims Activity

Week Ending: November 24, 2012

Unemployment Insurance

Initial Claims – 1,559 initial claims were processed during the week ending 11/24/12, an increase of 69 from the previous week, and a decrease of 165 from a year ago. The number of initial claims filed to date is down 3.8 percent from last year and down 7.3 percent from two years ago.

Continued Claims – 11,383 continued claims were processed during the week of 11/24/12, an increase of 247 from the previous week and a decrease of 1,658 from a year ago. The number of continued claims filed to date is down 10.0 percent from last year and down 18.4 percent from two years ago.

Workshare – gives employers an alternative to layoffs by allowing employees to work reduced hours and collect a percentage of regular UI benefits to compensate for lost pay. This week, 26 initial claims and 373 continued claims were processed. An estimated 7 layoffs were prevented this week, as a result of Workshare.

Emergency Unemployment Compensation 08 – EUC08, which became effective July 6, 2008, provides up to 53 weeks of federally funded benefits to eligible individuals who exhausted their UI claims. This week there were 312 new EUC08 claims processed and 8,683 continued claims processed (3,693 under tier I, 2,280 under tier II, 1,459 under tier III and 1,251 under tier IV).

Exhaustions – 326 individuals exhausted their regular payments this week, a decrease of 32 from a year ago. There were 122 individuals that exhausted EUC08.

Temporary Disability Insurance

Temporary Disability Insurance – 428 initial claims and 7,165 continued claims were processed for Temporary Disability Insurance. The average weekly TDI payment is \$436 per week. Rhode Island is currently paying an average of 10.8 weeks per new claim.

	Initial Claims			Continued Claims	TOTAL - Initial and Continued Claims			
	Total	New	Additional		Current Week	Previous Week	Year Ago	Two Years Ago
Total - All programs*	2,185	1,191	994	20,935	23,120	23,098	30,031	33,091
UI Claims	1,559	827	732	11,383	12,942	12,626	14,765	15,546
Change from:								
Previous Week	69	-119	188	247	316			
Year Ago	-165	-62	-103	-1,658	-1,823			
Two Years Ago	-280	-165	-115	-2,324	-2,604			
EUC08 Claims	546	312	234	8,683	9,229	9,330	13,563	14,909
Interstate-Liable	54	36	18	496	550	498	549	632
Workshare	26	16	10	373	399	644	1,154	2,004
Workshare Equivalency	7	3	4	95	102	162	283	506
UI Exhaustions	-	-	-	326	326	358	386	415
EUC08 Exhaustions	-	-	-	122	122	161	259	145
TDI Claims	428	352	76	7,165	7,593	6,652	7,615	7,772
Change from:								
Previous Week	-230	-177	-53	1,171	941			
Year Ago	-182	-132	-50	160	-22			

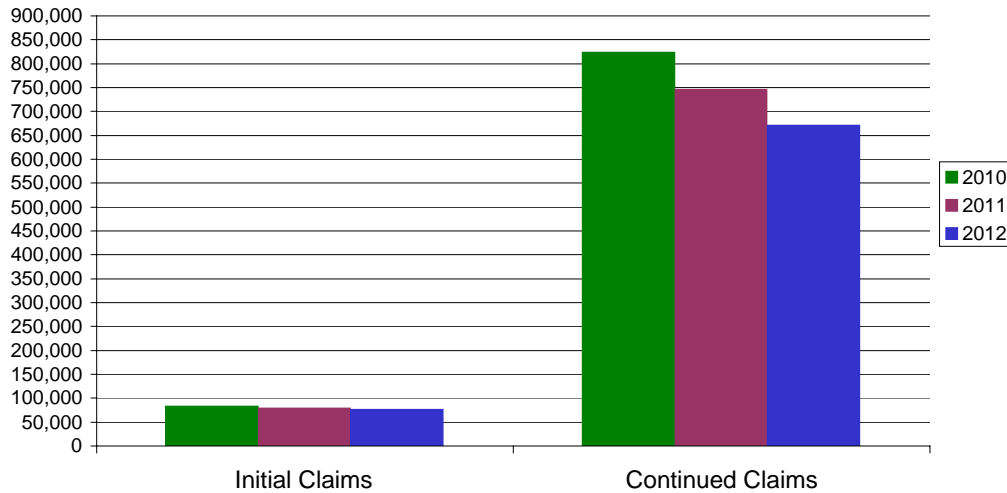
* Includes UI, EUC08, EB, Workshare & Interstate Liable.

Equal Opportunity Employer / Program / Auxiliary aids and services available upon request to individuals with disabilities / TTY via RI Relay 711.

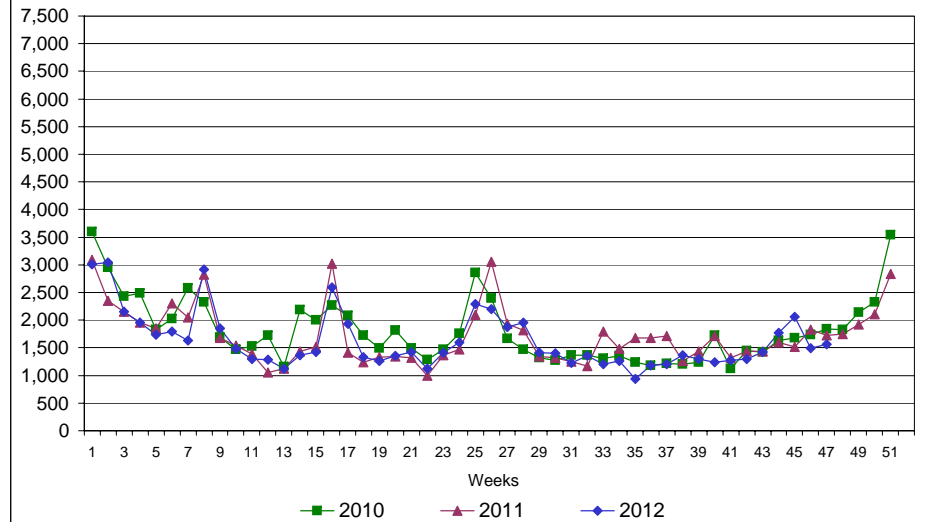
Rhode Island Department of Labor and Training

November 24, 2012

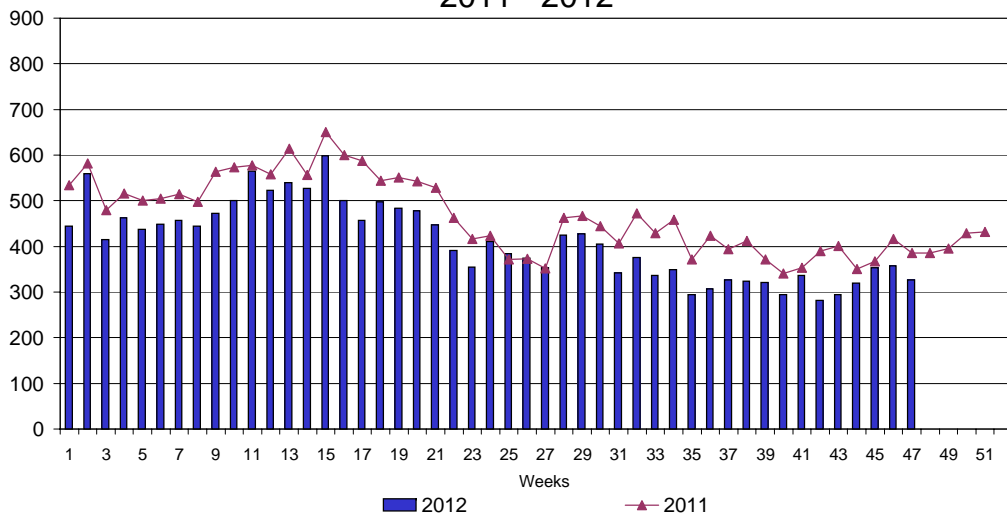
UI Claims Comparison Year to Date



UI Initial Claims 2010 - 2012



UI Exhaustions 2011 - 2012



TDI Claims Comparison Year to Date

