



## Rhode Island Department of Labor and Training

# *Weekly Update of Claims Activity*

*Week Ending: December 8, 2012*

### *Unemployment Insurance*

**Initial Claims** – 1,983 initial claims were processed during the week ending 12/8/12, an increase of 193 from the previous week, and an increase of 62 from a year ago. The number of initial claims filed to date is down 3.5 percent from last year and down 7.2 percent from two years ago.

**Continued Claims** – 12,422 continued claims were processed during the week of 12/8/12, a decrease of 21 from the previous week and a decrease of 1,696 from a year ago. The number of continued claims filed to date is down 10.2 percent from last year and down 18.4 percent from two years ago.

**Workshare** – gives employers an alternative to layoffs by allowing employees to work reduced hours and collect a percentage of regular UI benefits to compensate for lost pay. This week, 25 initial claims and 412 continued claims were processed. An estimated 5 layoffs were prevented this week, as a result of Workshare.

**Emergency Unemployment Compensation 08** – EUC08, which became effective July 6, 2008, provides up to 53 weeks of federally funded benefits to eligible individuals who exhausted their UI claims. This week there were 271 new EUC08 claims processed and 8,859 continued claims processed (3,756 under tier I, 2,304 under tier II, 1,385 under tier III and 1,414 under tier IV).

**Exhaustions** – 338 individuals exhausted their regular payments this week, a decrease of 25 from a year ago. There were 125 individuals that exhausted EUC08.

### *Temporary Disability Insurance*

**Temporary Disability Insurance** – 914 initial claims and 6,634 continued claims were processed for Temporary Disability Insurance. The average weekly TDI payment is \$440 per week. Rhode Island is currently paying an average of 10.8 weeks per new claim.

	Initial Claims			Continued Claims	TOTAL - Initial and Continued Claims			
	Total	New	Additional		Current Week	Previous Week	Year Ago	Two Years Ago
<b>Total - All programs*</b>	2,508	1,964	544	22,241	24,749	24,850	30,854	35,791
<b>UI Claims</b>	1,983	1,648	335	12,422	14,405	14,233	16,039	17,565
Change from:								
Previous Week	193	565	-372	-21	172			
Year Ago	62	541	-479	-1,696	-1,634			
Two Years Ago	-161	358	-519	-2,999	-3,160			
<b>EUC08 Claims</b>	463	271	192	8,859	9,322	9,521	13,433	15,320
<b>Interstate-Liable</b>	37	24	13	548	585	569	614	686
<b>Workshare</b>	25	21	4	412	437	527	768	2,220
<b>Workshare Equivalency</b>	5	4	1	170	175	136	183	583
<b>UI Exhaustions</b>	-	-	-	338	338	363	396	448
<b>EUC08 Exhaustions</b>	-	-	-	125	125	125	230	358
<b>TDI Claims</b>	914	751	163	6,634	7,548	7,702	7,897	8,303
Change from:								
Previous Week	298	237	61	-452	-154			
Year Ago	180	151	29	-529	-349			

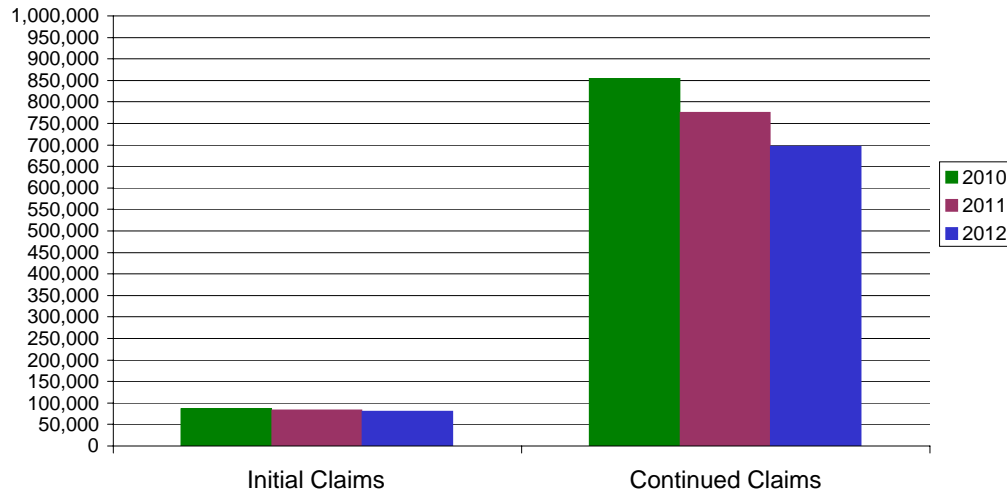
\* Includes UI, EUC08, EB, Workshare & Interstate Liable.

Equal Opportunity Employer / Program / Auxiliary aids and services available upon request to individuals with disabilities / TTY via RI Relay 711.

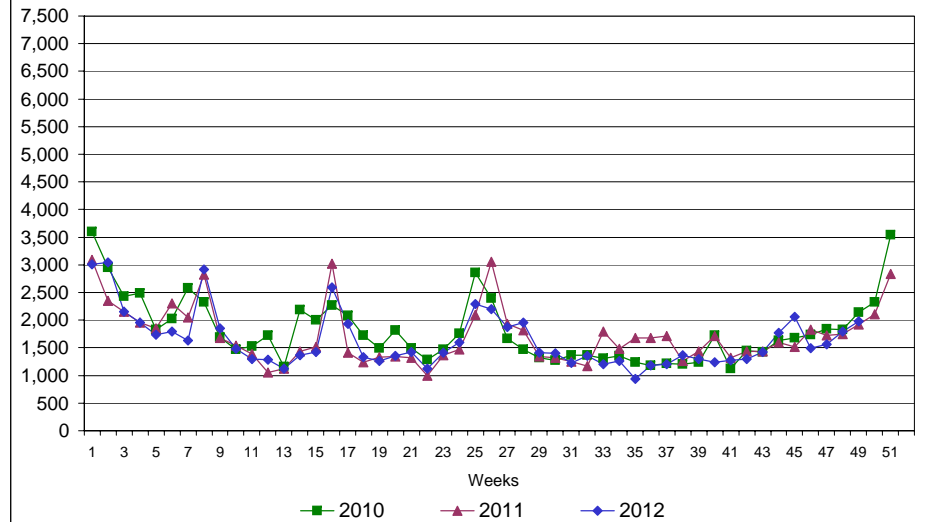
# Rhode Island Department of Labor and Training

## December 8, 2012

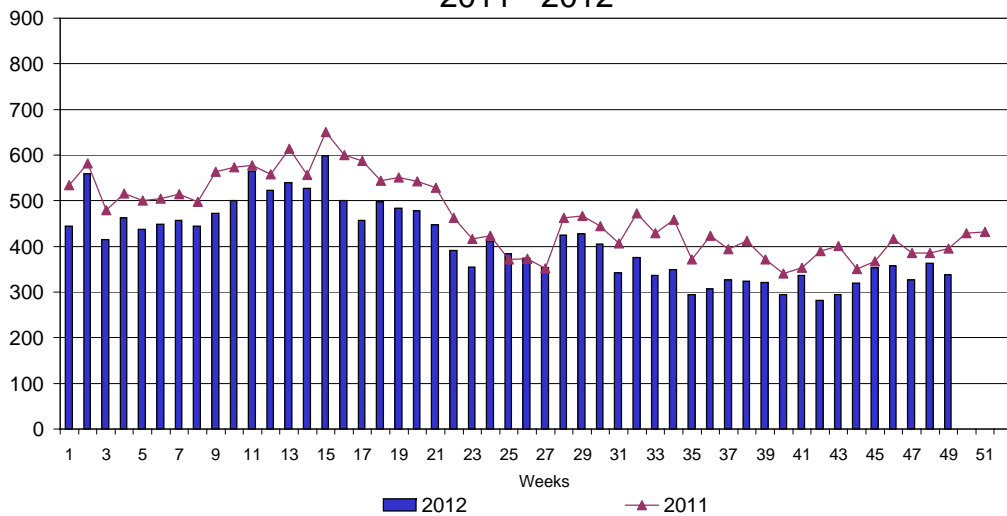
### UI Claims Comparison Year to Date



### UI Initial Claims 2010 - 2012



### UI Exhaustions 2011 - 2012



### TDI Claims Comparison Year to Date

