



*Rhode Island Department of Labor and Training*

*Weekly Update of Claims Activity*

*Week Ending: December 15, 2012*

***Unemployment Insurance***

**Initial Claims** – 1,811 initial claims were processed during the week ending 12/15/12, a decrease of 172 from the previous week, and a decrease of 291 from a year ago. The number of initial claims filed to date is down 3.7 percent from last year and down 7.6 percent from two years ago.

**Continued Claims** – 12,955 continued claims were processed during the week of 12/15/12, an increase of 533 from the previous week and a decrease of 1,648 from a year ago. The number of continued claims filed to date is down 10.2 percent from last year and down 18.4 percent from two years ago.

**Workshare** – gives employers an alternative to layoffs by allowing employees to work reduced hours and collect a percentage of regular UI benefits to compensate for lost pay. This week, 6 initial claims and 600 continued claims were processed. One layoff was prevented this week, as a result of Workshare.

**Emergency Unemployment Compensation 08** – EUC08, which became effective July 6, 2008, provides up to 53 weeks of federally funded benefits to eligible individuals who exhausted their UI claims. This week there were 324 new EUC08 claims processed and 8,642 continued claims processed (3,580 under tier I, 2,323 under tier II, 1,322 under tier III and 1,417 under tier IV).

**Exhaustions** – 343 individuals exhausted their regular payments this week, an increase of 5 from a year ago. There were 125 individuals that exhausted EUC08.

***Temporary Disability Insurance***

**Temporary Disability Insurance** – 961 initial claims and 7,876 continued claims were processed for Temporary Disability Insurance. The average weekly TDI payment is \$443 per week. Rhode Island is currently paying an average of 10.7 weeks per new claim.

	<u>Initial Claims</u>			<u>Continued Claims</u>	<u>TOTAL - Initial and Continued Claims</u>			
	<u>Total</u>	<u>New</u>	<u>Additional</u>		<u>Current Week</u>	<u>Previous Week</u>	<u>Year Ago</u>	<u>Two Years Ago</u>
<b>Total - All programs*</b>	2,362	1,379	983	22,732	25,094	24,749	32,052	35,026
<b>UI Claims</b>	1,811	1,025	786	12,955	14,766	14,405	16,705	18,103
Change from:								
Previous Week	-172	-623	451	533	361			
Year Ago	-291	-195	-96	-1,648	-1,939			
Two Years Ago	-512	-311	-201	-2,825	-3,337			
<b>EUC08 Claims</b>	495	324	171	8,642	9,137	9,322	13,207	14,799
<b>Interstate-Liable</b>	50	26	24	535	585	585	624	667
<b>Workshare</b>	6	4	2	600	606	437	1,516	1,457
<b>Workshare Equivalency</b>	1	1	0	147	148	175	427	377
<b>UI Exhaustions</b>	-	-	-	343	343	338	429	498
<b>EUC08 Exhaustions</b>	-	-	-	125	125	125	216	352
<b>TDI Claims</b>	961	769	192	7,876	8,837	7,548	7,718	7,806
Change from:								
Previous Week	47	18	29	1,242	1,289			
Year Ago	394	302	92	725	1,119			

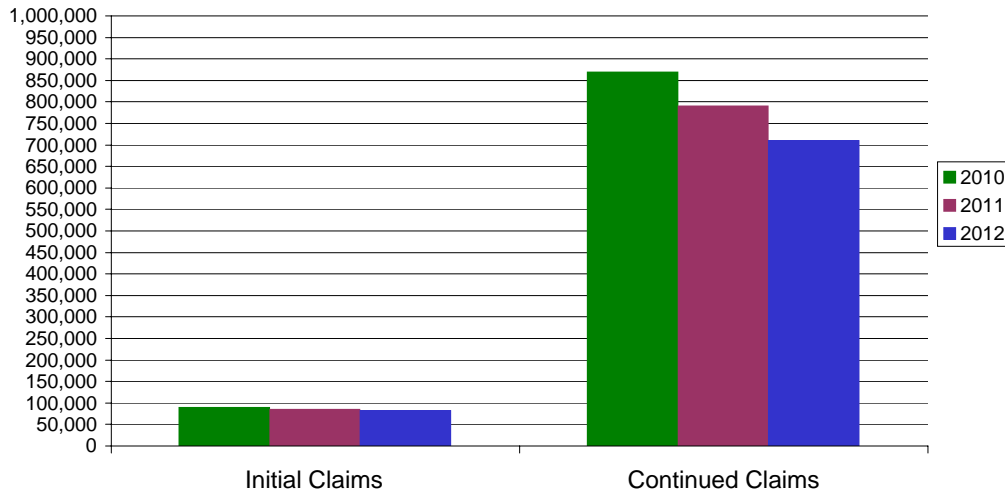
\* Includes UI, EUC08, EB, Workshare & Interstate Liable.

Equal Opportunity Employer / Program / Auxiliary aids and services available upon request to individuals with disabilities / TTY via RI Relay 711.

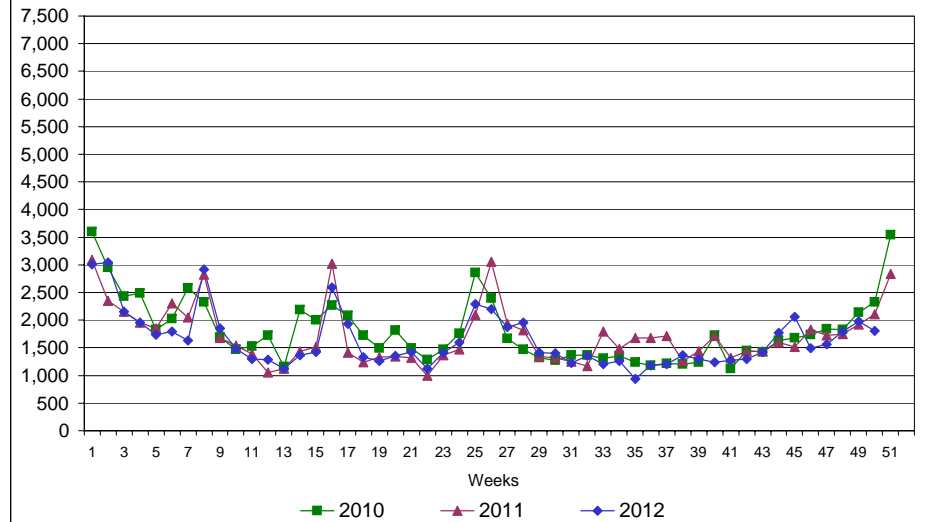
# Rhode Island Department of Labor and Training

## December 15, 2012

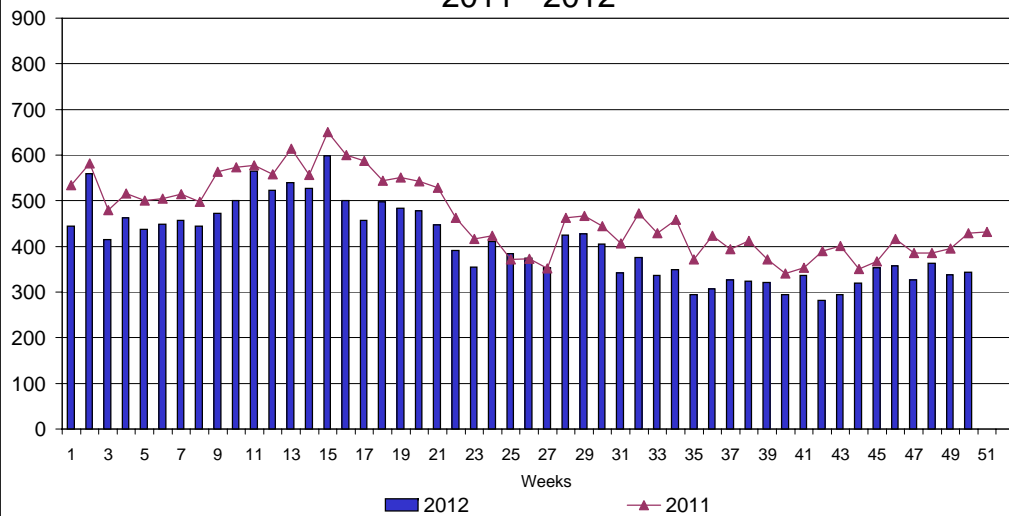
### UI Claims Comparison Year to Date



### UI Initial Claims 2010 - 2012



### UI Exhaustions 2011 - 2012



### TDI Claims Comparison Year to Date

