



## *Rhode Island Department of Labor and Training*

# *Weekly Update of Claims Activity*

*Week Ending: December 22, 2012*

### *Unemployment Insurance*

**Initial Claims** – 2,241 initial claims were processed during the week ending 12/22/12, an increase of 430 from the previous week, and a decrease of 598 from a year ago. The number of initial claims filed to date is down 4.3 percent from last year and down 8.7 percent from two years ago.

**Continued Claims** – 13,564 continued claims were processed during the week of 12/22/12, an increase of 609 from the previous week and a decrease of 1,747 from a year ago. The number of continued claims filed to date is down 10.2 percent from last year and down 18.5 percent from two years ago.

**Workshare** – gives employers an alternative to layoffs by allowing employees to work reduced hours and collect a percentage of regular UI benefits to compensate for lost pay. This week, 39 initial claims and 346 continued claims were processed. An estimated 9 layoffs were prevented this week, as a result of Workshare.

**Emergency Unemployment Compensation 08** – EUC08, which became effective July 6, 2008, provides up to 53 weeks of federally funded benefits to eligible individuals who exhausted their UI claims. This week there were 316 new EUC08 claims processed and 8,785 continued claims processed (3,589 under tier I, 2,461 under tier II, 1,309 under tier III and 1,426 under tier IV).

**Exhaustions** – 356 individuals exhausted their regular payments this week, an increase of 13 from a year ago. There were 122 individuals that exhausted EUC08.

### *Temporary Disability Insurance*

**Temporary Disability Insurance** – 603 initial claims and 7,337 continued claims were processed for Temporary Disability Insurance. The average weekly TDI payment is \$434 per week. Rhode Island is currently paying an average of 10.7 weeks per new claim.

|                              | <u>Initial Claims</u> |            |                   | <u>Continued Claims</u> | <u>TOTAL - Initial and Continued Claims</u> |                      |                 |                      |
|------------------------------|-----------------------|------------|-------------------|-------------------------|---|----------------------|-----------------|----------------------|
|                              | <u>Total</u>          | <u>New</u> | <u>Additional</u> |                         | <u>Current Week</u>                         | <u>Previous Week</u> | <u>Year Ago</u> | <u>Two Years Ago</u> |
| <b>Total - All programs*</b> | 2,859                 | 1,651      | 1,208             | 23,250                  | 26,109                                      | 25,094               | 33,272          | 37,474               |
| <b>UI Claims</b>             | 2,241                 | 1,304      | 937               | 13,564                  | 15,805                                      | 14,766               | 18,150          | 20,646               |
| Change from:                 |                       |            |                   |                         |   |                      |                 |                      |
| Previous Week                | 430                   | 279        | 151               | 609                     | 1,039                                       |                      |                 |                      |
| Year Ago                     | -598                  | -83        | -515              | -1,747                  | -2,345                                      |                      |                 |                      |
| Two Years Ago                | -1,301                | -428       | -873              | -3,540                  | -4,841                                      |                      |                 |                      |
| <b>EUC08 Claims</b>          | 531                   | 316        | 215               | 8,785                   | 9,316                                       | 9,137                | 13,259          | 14,217               |
| <b>Interstate-Liable</b>     | 48                    | 24         | 24                | 555                     | 603   | 585                  | 605             | 693                  |
| <b>Workshare</b>             | 39                    | 7          | 32                | 346                     | 385   | 606                  | 1,258           | 1,918                |
| <b>Workshare Equivalency</b> | 9                     | 2          | 7                 | 85                      | 94  | 148                  | 333             | 503                  |
| <b>UI Exhaustions</b>        | -                     | -          | -                 | 356                     | 356   | 343                  | 432             | 521                  |
| <b>EUC08 Exhaustions</b>     | -                     | -          | -                 | 122                     | 122   | 125                  | 222             | 320                  |
| <b>TDI Claims</b>            | 603                   | 503        | 100               | 7,337                   | 7,940                                       | 8,837                | 8,065           | 8,800                |
| Change from:                 |                       |            |                   |                         |   |                      |                 |                      |
| Previous Week                | -358                  | -266       | -92               | -539                    | -897  |                      |                 |                      |
| Year Ago                     | 52                    | 54         | -2                | -177                    | -125  |                      |                 |                      |

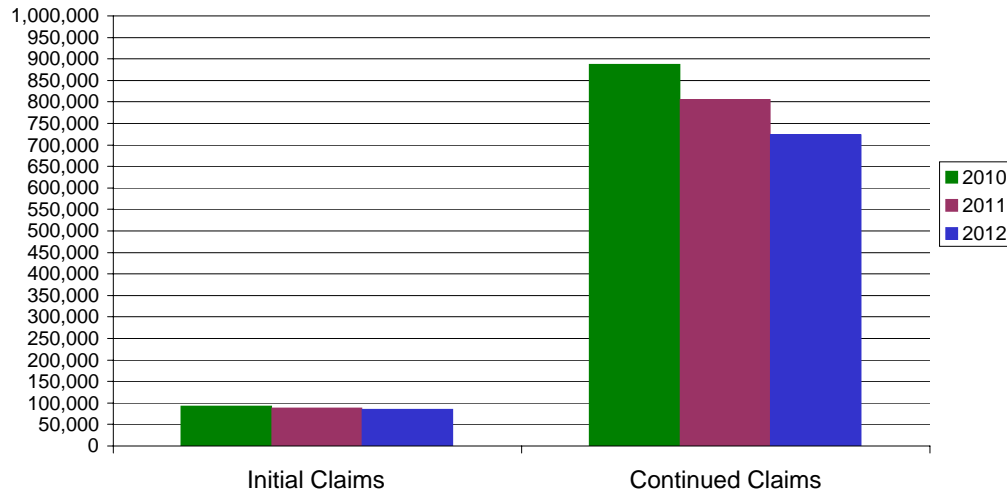
\* Includes UI, EUC08, EB, Workshare & Interstate Liable.

Equal Opportunity Employer / Program / Auxiliary aids and services available upon request to individuals with disabilities / TTY via RI Relay 711.

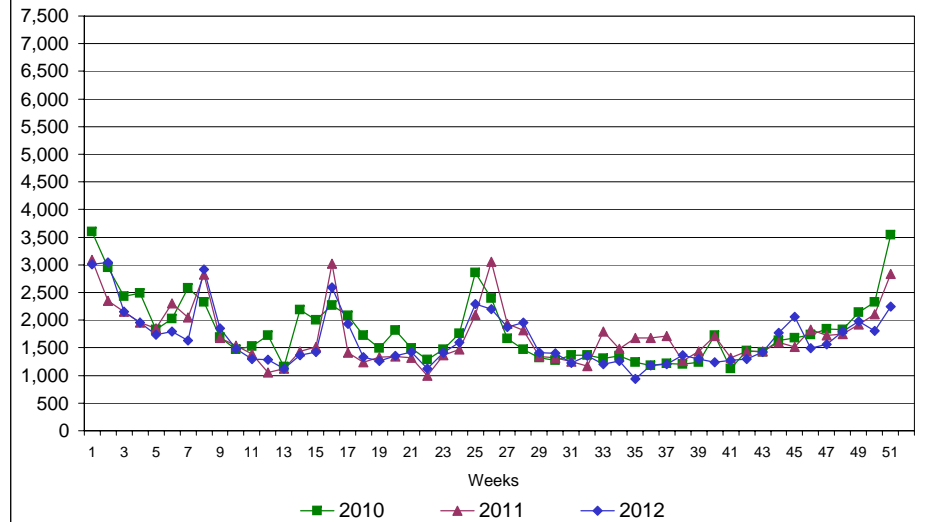
# Rhode Island Department of Labor and Training

## December 22, 2012

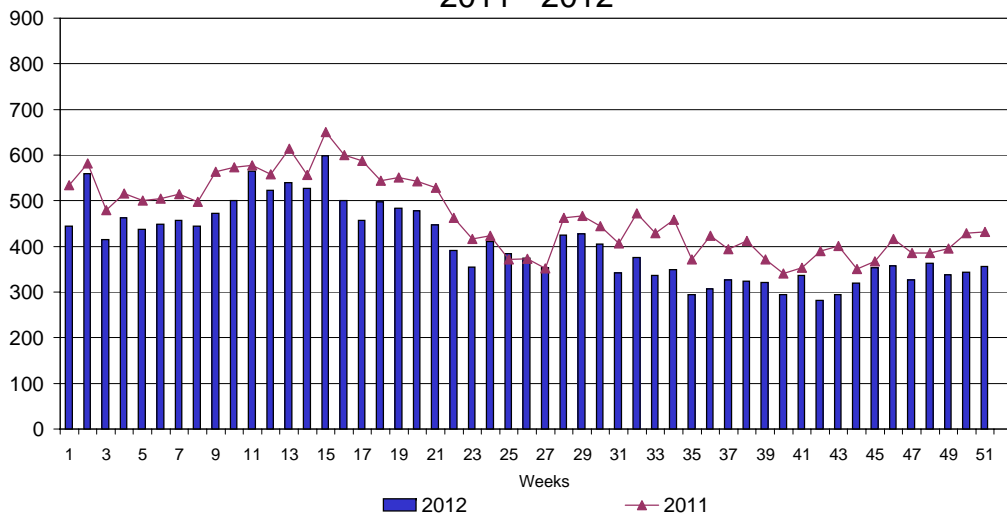
### UI Claims Comparison Year to Date



### UI Initial Claims 2010 - 2012



### UI Exhaustions 2011 - 2012



### TDI Claims Comparison Year to Date

