



Rhode Island Department of Labor and Training

Weekly Update of Claims Activity

Week Ending: March 2, 2013

Unemployment Insurance

Initial Claims – 2,598 initial claims were processed during the week ending 3/2/13, an increase of 26 from the previous week, and an increase of 742 from a year ago. Initial claims are up due to school vacation week. The number of initial claims filed to date is up 3.2 percent from last year and up 2.5 percent from two years ago

Continued Claims – 19,599 continued claims were processed during the week of 3/2/13, an increase of 1,915 from the previous week and a decrease of 1,833 from a year ago. The number of continued claims filed to date is down 9.3 percent from last year and down 16.8 percent from two years ago.

Workshare – gives employers an alternative to layoffs by allowing employees to work reduced hours and collect a percentage of regular UI benefits to compensate for lost pay. This week, 82 initial claims and 355 continued claims were processed. An estimated 23 layoffs were prevented this week, as a result of Workshare.

Emergency Unemployment Compensation 08 – EUC08, which became effective July 6, 2008, provides up to 53 weeks of federally funded benefits to eligible individuals who exhausted their UI claims. This week there were 303 new EUC08 claims processed and 7,908 continued claims processed (2,820 under tier I, 2,633 under tier II, 1,252 under tier III and 1,203 under tier IV).

Exhaustions – 384 individuals exhausted their regular payments this week, an increase of 46 from a year ago. There were 126 individuals that exhausted EUC08.

Temporary Disability Insurance

Temporary Disability Insurance – 563 initial claims and 7,534 continued claims were processed for Temporary Disability Insurance. The average weekly TDI payment is \$439 per week. Rhode Island is currently paying an average of 11.0 weeks per new claim.

	Initial Claims			Continued Claims	TOTAL - Initial and Continued Claims			
	Total	New	Additional		Current Week	Previous Week	Year Ago	Two Years Ago
Total - All programs*	3,198	1,436	1,762	28,454	31,652	29,707	37,090	41,728
UI Claims	2,598	1,060	1,538	19,599	22,197	20,256	23,288	24,755
Change from:								
Previous Week	26	-365	391	1,915	1,941			
Year Ago	742	153	589	-1,833	-1,091			
Two Years Ago	918	151	767	-3,476	-2,558			
EUC08 Claims	479	303	176	7,908	8,387	8,334	12,238	14,492
Interstate-Liable	39	20	19	592	631	598	640	675
Workshare	82	53	29	355	437	519	924	1,806
Workshare Equivalency	23	13	10	95	118	132	245	432
UI Exhaustions	-	-	-	384	384	338	472	563
EUC08 Exhaustions	-	-	-	126	126	96	224	158
TDI Claims	563	461	102	7,534	8,097	7,936	8,373	8,770
Change from:								
Previous Week	-101	-53	-48	262	161			
Year Ago	-451	-348	-103	175	-276			

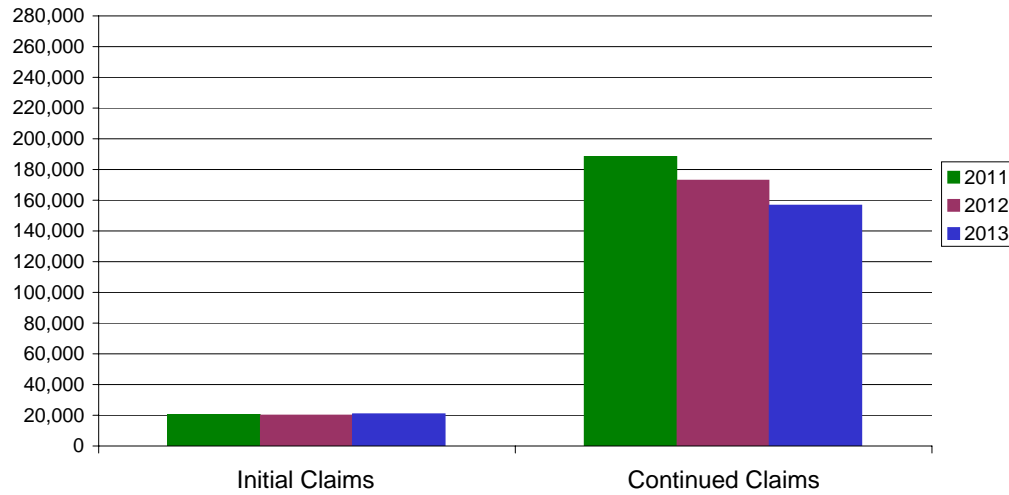
* Includes UI, EUC08, EB, Workshare & Interstate Liable.

Equal Opportunity Employer / Program / Auxiliary aids and services available upon request to individuals with disabilities / TTY via RI Relay 711.

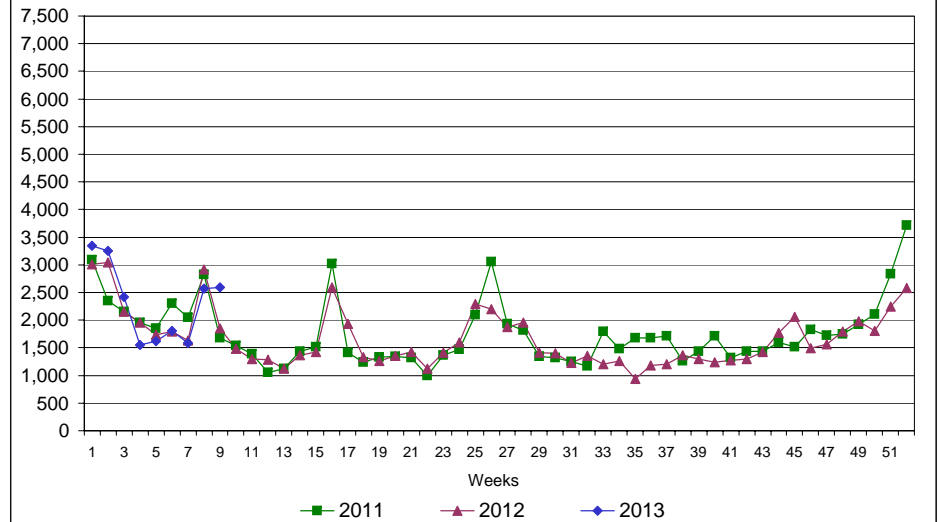
Rhode Island Department of Labor and Training

March 2, 2013

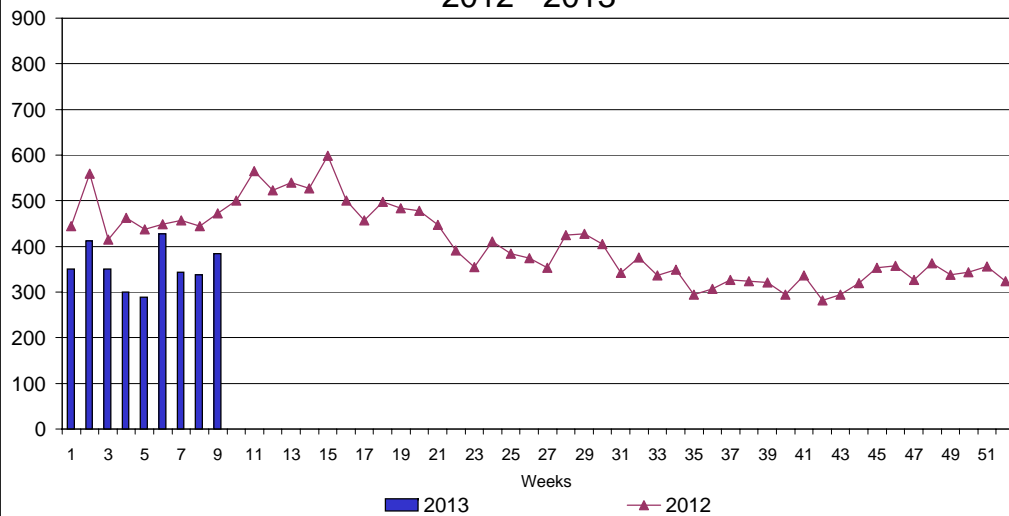
UI Claims Comparison Year to Date



UI Initial Claims 2011 - 2013



UI Exhaustions 2012 - 2013



TDI Claims Comparison Year to Date

