



Rhode Island Department of Labor and Training

Weekly Update of Claims Activity

Week Ending: April 13, 2013

Unemployment Insurance

Initial Claims – 1,096 initial claims were processed during the week ending 4/13/13, a decrease of 14 from the previous week, and a decrease of 323 from a year ago. The number of initial claims filed to date is up 3.7 percent from last year and up 2.9 percent from two years ago

Continued Claims – 13,992 continued claims were processed during the week of 4/13/13, a decrease of 1,661 from the previous week and a decrease of 827 from a year ago. The number of continued claims filed to date is down 7.5 percent from last year and down 15.7 percent from two years ago.

Workshare – gives employers an alternative to layoffs by allowing employees to work reduced hours and collect a percentage of regular UI benefits to compensate for lost pay. This week, 3 initial claims and 455 continued claims were processed. An estimated 1 layoff was prevented this week, as a result of Workshare.

Emergency Unemployment Compensation 08 – EUC08, which became effective July 6, 2008, provides up to 53 weeks of federally funded benefits to eligible individuals who exhausted their UI claims. This week there were 230 new EUC08 claims processed and 7,526 continued claims processed (2,710 under tier I, 2,281 under tier II, 1,392 under tier III and 1,143 under tier IV).

Exhaustions – 409 individuals exhausted their regular payments this week, an increase of 23 from a year ago. There were 131 individuals that exhausted EUC08.

Temporary Disability Insurance

Temporary Disability Insurance – 561 initial claims and 7,020 continued claims were processed for Temporary Disability Insurance. The average weekly TDI payment is \$438 per week. Rhode Island is currently paying an average of 11.1 weeks per new claim.

	Initial Claims			Continued Claims	TOTAL - Initial and Continued Claims			
	Total	New	Additional		Current Week	Previous Week	Year Ago	Two Years Ago
Total - All programs*	1,477	887	590	22,497	23,974	26,060	29,396	35,247
UI Claims	1,096	638	458	13,992	15,088	16,763	16,238	18,317
Change from:								
Previous Week	-14	34	-48	-1,661	-1,675			
Year Ago	-323	-76	-247	-827	-1,150			
Two Years Ago	-419	-153	-266	-2,810	-3,229			
EUC08 Claims	346	230	116	7,526	7,872	8,134	11,693	14,480
Interstate-Liable	32	18	14	524	556	555	532	545
Workshare	3	1	2	455	458	608	933	1,905
Workshare Equivalency	1	0	1	119	120	175	233	499
UI Exhaustions	-	-	-	409	409	386	598	650
EUC08 Exhaustions	-	-	-	131	131	107	175	258
TDI Claims	561	446	115	7,020	7,581	7,661	8,100	8,226
Change from:								
Previous Week	-451	-419	-32	371	-80			
Year Ago	-352	-309	-43	-167	-519			

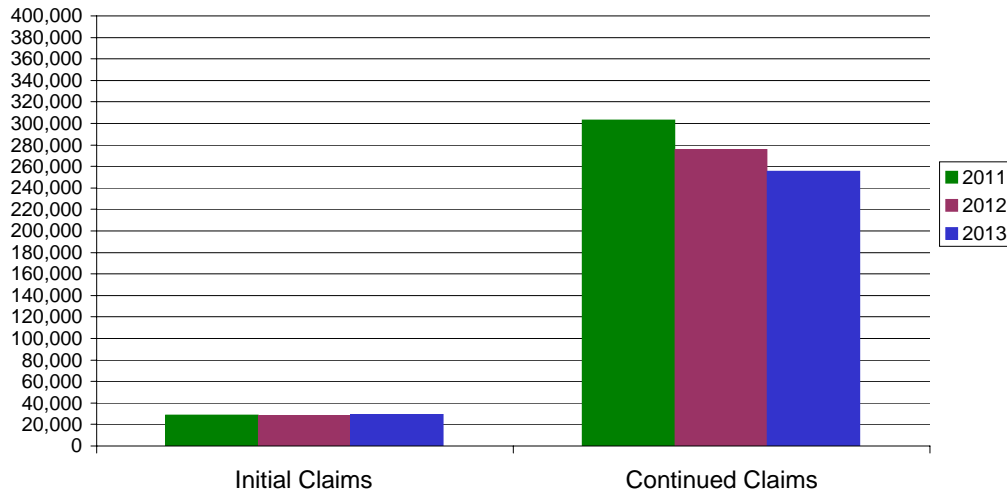
* Includes UI, EUC08, EB, Workshare & Interstate Liable.

Equal Opportunity Employer / Program / Auxiliary aids and services available upon request to individuals with disabilities / TTY via RI Relay 711.

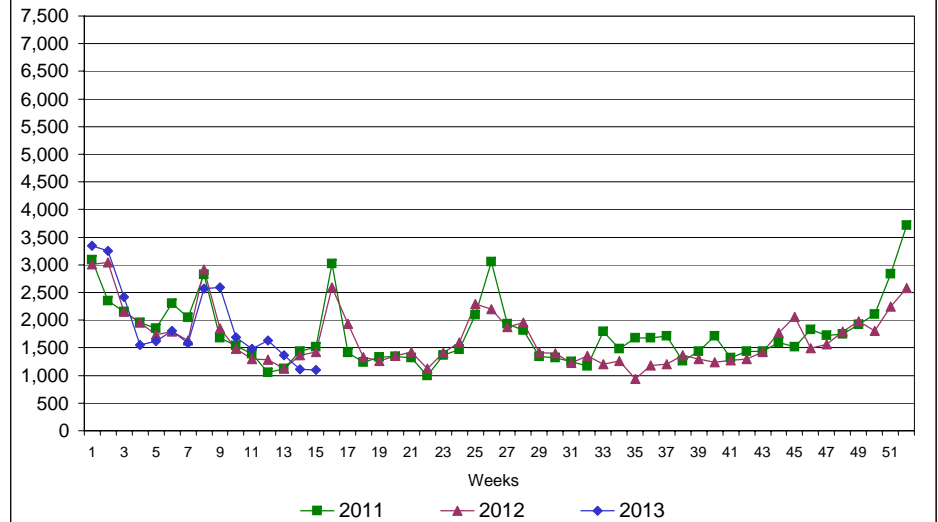
Rhode Island Department of Labor and Training

April 13, 2013

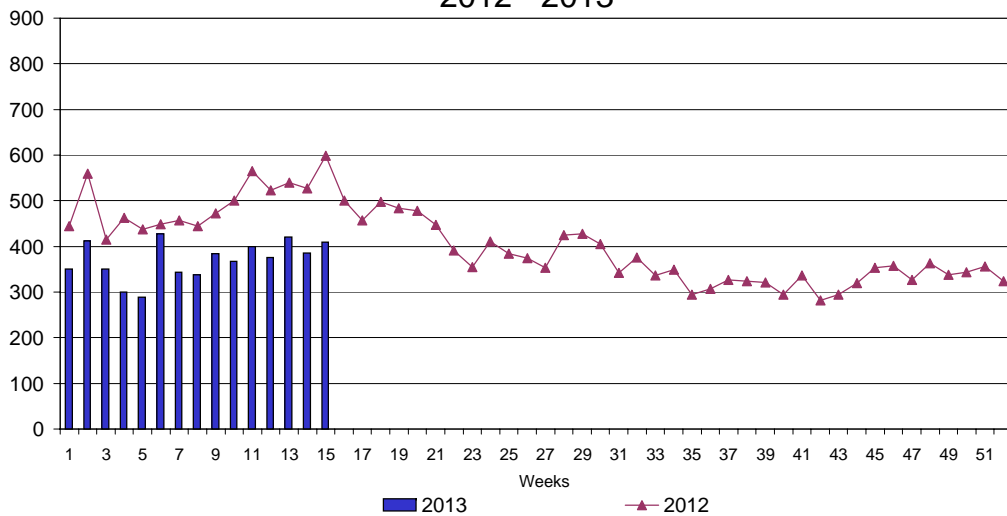
UI Claims Comparison Year to Date



UI Initial Claims 2011 - 2013



UI Exhaustions 2012 - 2013



TDI Claims Comparison Year to Date

