



Rhode Island Department of Labor and Training

Weekly Update of Claims Activity

Week Ending: May 4, 2013

Unemployment Insurance

Initial Claims – 1,057 initial claims were processed during the week ending 5/4/13, decrease of 682 from the previous week, and a decrease of 274 from a year ago. The number of initial claims filed to date is up 1.4 percent from last year and up 1.4 percent from two years ago

Continued Claims – 11,648 continued claims were processed during the week of 5/4/13, a decrease of 2,473 from the previous week and a decrease of 1,689 from a year ago. The number of continued claims filed to date is down 7.9 percent from last year and down 16.3 percent from two years ago.

Workshare – gives employers an alternative to layoffs by allowing employees to work reduced hours and collect a percentage of regular UI benefits to compensate for lost pay. This week, 15 initial claims and 460 continued claims were processed. An estimated 3 layoffs were prevented this week, as a result of Workshare.

Emergency Unemployment Compensation 08 – EUC08, which became effective July 6, 2008, provides up to 53 weeks of federally funded benefits to eligible individuals who exhausted their UI claims. This week there were 294 new EUC08 claims processed and 7,281 continued claims processed (2,577 under tier I, 2,108 under tier II, 1,479 under tier III and 1,117 under tier IV).

Exhaustions – 333 individuals exhausted their regular payments this week, a decrease of 23 from a year ago. There were 96 individuals that exhausted EUC08.

Temporary Disability Insurance

Temporary Disability Insurance – 966 initial claims and 6,031 continued claims were processed for Temporary Disability Insurance. The average weekly TDI payment is \$434 per week. Rhode Island is currently paying an average of 11.1 weeks per new claim.

	<u>Initial Claims</u>			<u>Continued Claims</u>	<u>TOTAL - Initial and Continued Claims</u>			
	<u>Total</u>	<u>New</u>	<u>Additional</u>		<u>Current Week</u>	<u>Previous Week</u>	<u>Year Ago</u>	<u>Two Years Ago</u>
Total - All programs*	1,518	978	540	19,841	21,359	24,609	28,191	32,642
UI Claims	1,057	655	402	11,648	12,705	15,860	14,668	16,124
Change from:								
Previous Week	-682	-173	-509	-2,473	-3,155			
Year Ago	-274	-99	-175	-1,689	-1,963			
Two Years Ago	-179	-88	-91	-3,240	-3,419			
EUC08 Claims	425	294	131	7,281	7,706	7,770	11,472	14,749
Interstate-Liable	21	14	7	452	473	541	495	540
Workshare	15	15	0	460	475	438	1,556	1,229
Workshare Equivalency	3	3	0	122	125	112	393	293
UI Exhaustions	-	-	-	333	333	356	498	544
EUC08 Exhaustions	-	-	-	96	96	98	240	209
TDI Claims	966	795	171	6,031	6,997	7,117	9,350	7,553
Change from:								
Previous Week	399	322	77	-519	-120			
Year Ago	153	135	18	-2,506	-2,353			

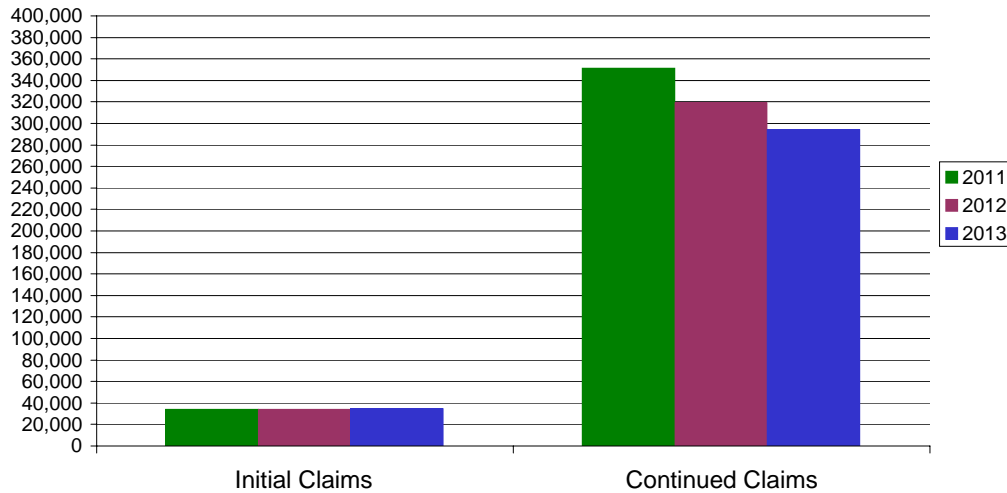
* Includes UI, EUC08, EB, Workshare & Interstate Liable.

Equal Opportunity Employer / Program / Auxiliary aids and services available upon request to individuals with disabilities / TTY via RI Relay 711.

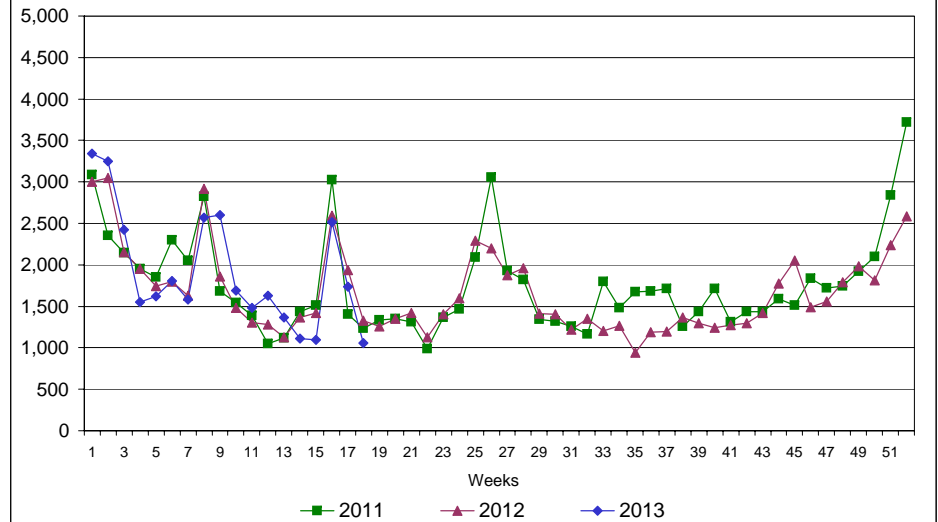
Rhode Island Department of Labor and Training

May 4, 2013

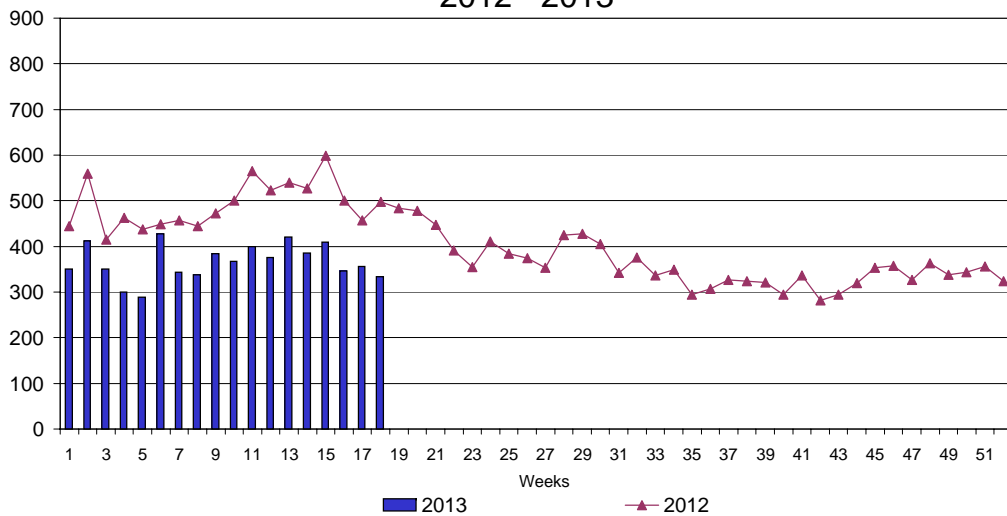
UI Claims Comparison Year to Date



UI Initial Claims 2011 - 2013



UI Exhaustions 2012 - 2013



TDI Claims Comparison Year to Date

