



## Rhode Island Department of Labor and Training

# *Weekly Update of Claims Activity*

**Week Ending: May 11, 2013**

### *Unemployment Insurance*

**Initial Claims** – 947 initial claims were processed during the week ending 5/11/13, decrease of 110 from the previous week, and a decrease of 310 from a year ago. The number of initial claims filed to date is up 0.5 percent from last year and up 0.2 percent from two years ago

**Continued Claims** – 11,049 continued claims were processed during the week of 5/11/13, a decrease of 599 from the previous week and a decrease of 1,737 from a year ago. The number of continued claims filed to date is down 8.1 percent from last year and down 16.5 percent from two years ago.

**Workshare** – gives employers an alternative to layoffs by allowing employees to work reduced hours and collect a percentage of regular UI benefits to compensate for lost pay. This week, 19 initial claims and 480 continued claims were processed. An estimated 6 layoffs were prevented this week, as a result of Workshare.

**Emergency Unemployment Compensation 08** – EUC08, which became effective July 6, 2008, provides up to 53 weeks of federally funded benefits to eligible individuals who exhausted their UI claims. This week there were 235 new EUC08 claims processed and 7,190 continued claims processed (2,526 under tier I, 2,027 under tier II, 1,507 under tier III and 1,130 under tier IV).

**Exhaustions** – 390 individuals exhausted their regular payments this week, an increase of 57 from a year ago. There were 75 individuals that exhausted EUC08.

### *Temporary Disability Insurance*

**Temporary Disability Insurance** – 722 initial claims and 6,431 continued claims were processed for Temporary Disability Insurance. The average weekly TDI payment is \$435 per week. Rhode Island is currently paying an average of 11.1 weeks per new claim.

	Initial Claims			Continued Claims	TOTAL - Initial and Continued Claims			
	Total	New	Additional		Current Week	Previous Week	Year Ago	Two Years Ago
<b>Total - All programs*</b>	1,349	851	498	19,174	20,523	21,359	26,869	32,291
<b>UI Claims</b>	947	571	376	11,049	11,996	12,705	14,043	15,316
Change from:								
Previous Week	-110	-84	-26	-599	-709			
Year Ago	-310	-114	-196	-1,737	-2,047			
Two Years Ago	-385	-205	-180	-2,935	-3,320			
<b>EUC08 Claims</b>	341	235	106	7,190	7,531	7,706	11,274	15,037
<b>Interstate-Liable</b>	42	27	15	455	497	473	464	546
<b>Workshare</b>	19	18	1	480	499	475	1,088	1,392
<b>Workshare Equivalency</b>	6	5	1	114	120	125	326	428
<b>UI Exhaustions</b>	-	-	-	390	390	333	484	551
<b>EUC08 Exhaustions</b>	-	-	-	75	75	96	208	206
<b>TDI Claims</b>	722	592	130	6,431	7,153	6,997	7,938	7,759
Change from:								
Previous Week	-244	-203	-41	400	156			
Year Ago	15	15	0	-800	-785			

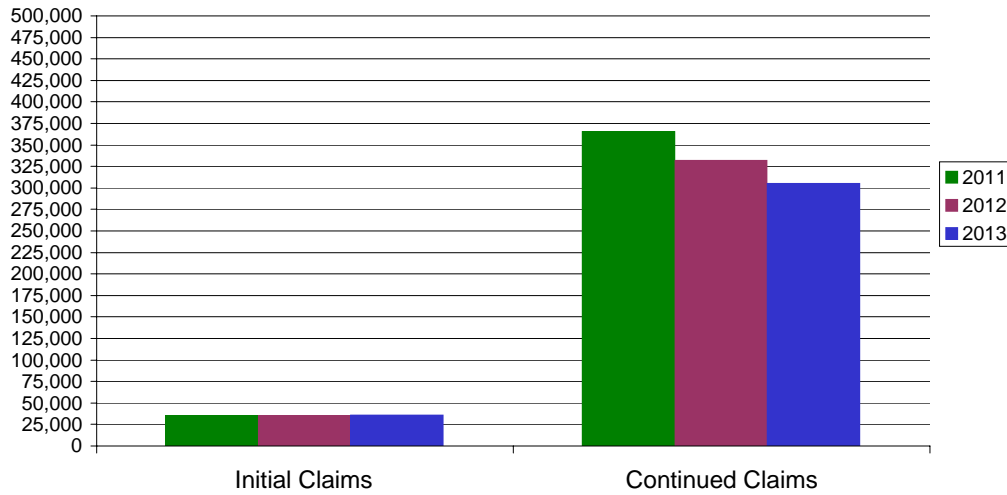
\* Includes UI, EUC08, Workshare & Interstate Liable.

Equal Opportunity Employer / Program / Auxiliary aids and services available upon request to individuals with disabilities / TTY via RI Relay 711.

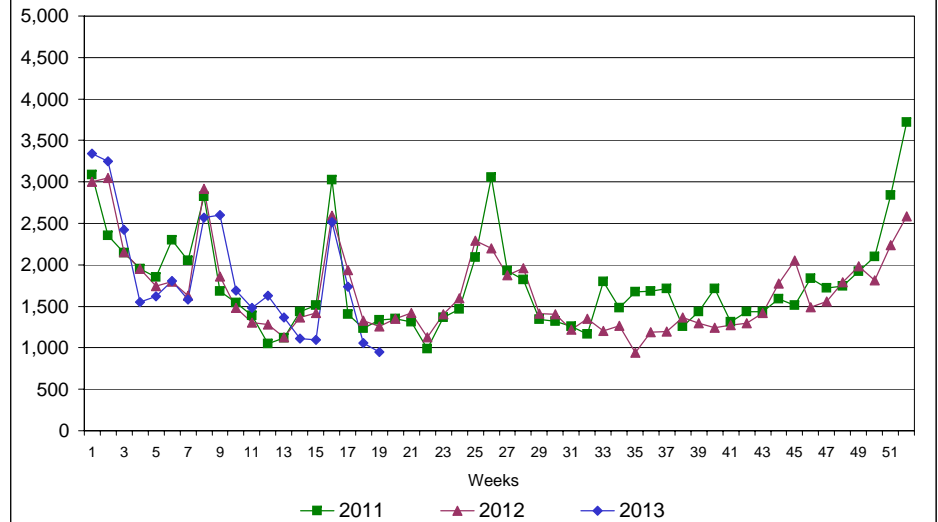
# Rhode Island Department of Labor and Training

## May 11, 2013

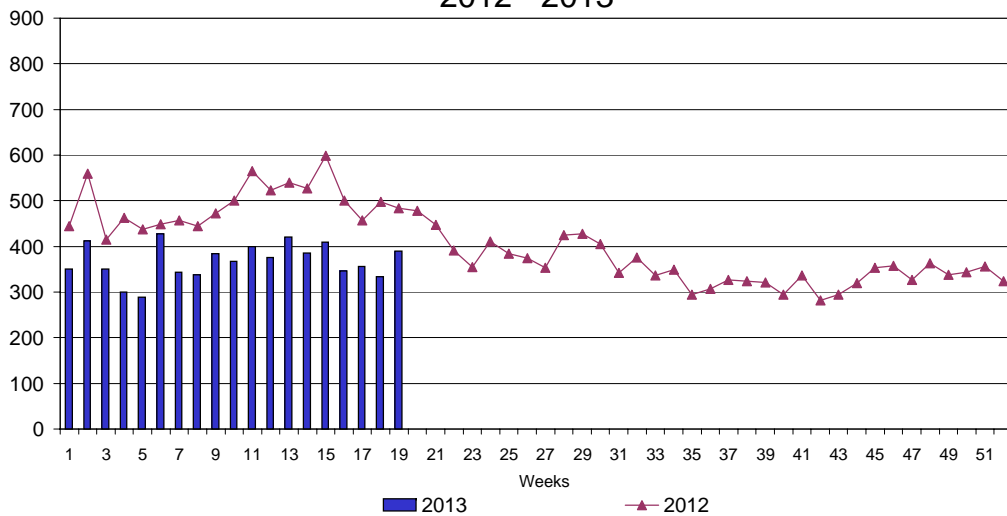
### UI Claims Comparison Year to Date



### UI Initial Claims 2011 - 2013



### UI Exhaustions 2012 - 2013



### TDI Claims Comparison Year to Date

