



Rhode Island Department of Labor and Training

Weekly Update of Claims Activity

Week Ending: May 25, 2013

Unemployment Insurance

Initial Claims – 1,064 initial claims were processed during the week ending 5/25/13, a decrease of 13 from the previous week, and a decrease of 356 from a year ago. The number of initial claims filed to date is down 1.2 percent from last year and down 1.2 percent from two years ago.

Continued Claims – 10,143 continued claims were processed during the week of 5/25/13, a decrease of 802 from the previous week and a decrease of 2,237 from a year ago. The number of continued claims filed to date is down 8.6 percent from last year and down 17.0 percent from two years ago.

Workshare – gives employers an alternative to layoffs by allowing employees to work reduced hours and collect a percentage of regular UI benefits to compensate for lost pay. This week, 74 initial claims and 524 continued claims were processed. An estimated 15 layoffs were prevented this week, as a result of Workshare.

Emergency Unemployment Compensation 08 – EUC08, which became effective July 6, 2008, provides up to 53 weeks of federally funded benefits to eligible individuals who exhausted their UI claims. This week there were 229 new EUC08 claims processed and 6,924 continued claims processed (2,456 under tier I, 1,942 under tier II, 1,394 under tier III and 1,132 under tier IV).

Exhaustions – 351 individuals exhausted their regular payments this week, a decrease of 18 from a year ago. There were 106 individuals that exhausted EUC08.

Temporary Disability Insurance

Temporary Disability Insurance – 651 initial claims and 7,249 continued claims were processed for Temporary Disability Insurance. The average weekly TDI payment is \$442 per week. Rhode Island is currently paying an average of 11.2 weeks per new claim.

	Initial Claims			Continued Claims	TOTAL - Initial and Continued Claims			
	Total	New	Additional		Current Week	Previous Week	Year Ago	Two Years Ago
Total - All programs*	1,540	883	657	18,050	19,590	20,291	26,362	32,061
UI Claims	1,064	615	449	10,143	11,207	12,022	13,800	15,023
Change from:								
Previous Week	-13	-12	-1	-802	-815			
Year Ago	-356	-248	-108	-2,237	-2,593			
Two Years Ago	-251	-153	-98	-3,565	-3,816			
EUC08 Claims	360	229	131	6,924	7,284	7,267	11,000	14,903
Interstate-Liable	42	13	29	459	501	472	533	503
Workshare	74	26	48	524	598	530	1,029	1,632
Workshare Equivalency	15	4	11	131	146	129	308	424
UI Exhaustions	-	-	-	351	351	369	447	528
EUC08 Exhaustions	-	-	-	106	106	104	176	228
TDI Claims	651	560	91	7,249	7,900	7,366	7,724	7,876
Change from:								
Previous Week	75	94	-19	459	534			
Year Ago	-148	-94	-54	324	176			

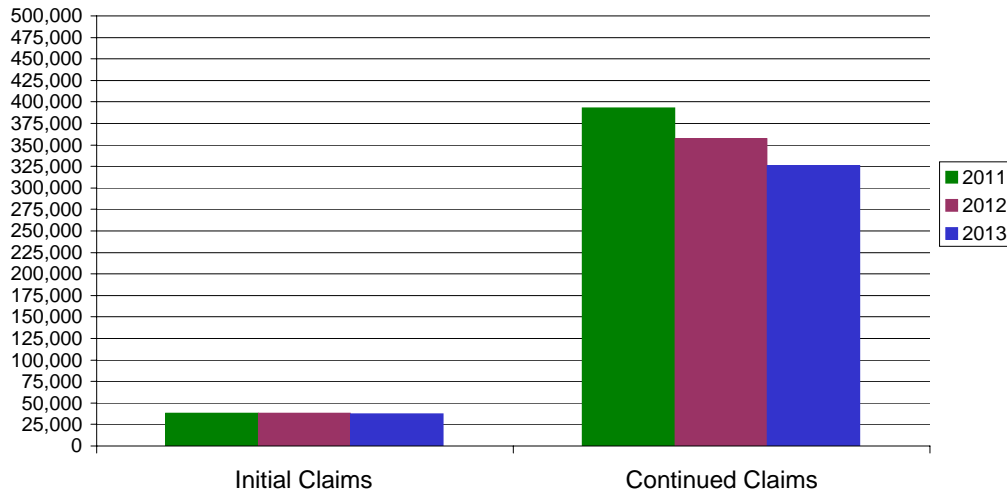
* Includes UI, EUC08, Workshare & Interstate Liable.

Equal Opportunity Employer / Program / Auxiliary aids and services available upon request to individuals with disabilities / TTY via RI Relay 711.

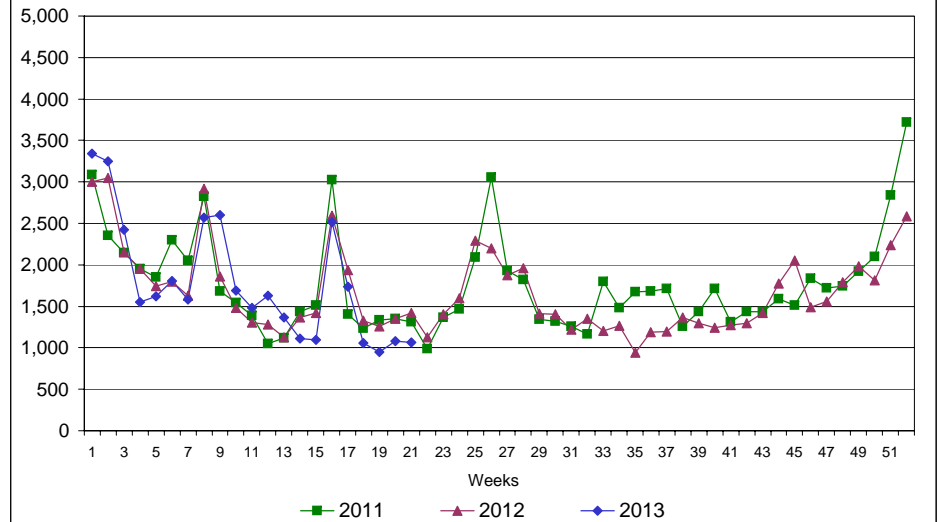
Rhode Island Department of Labor and Training

May 25, 2013

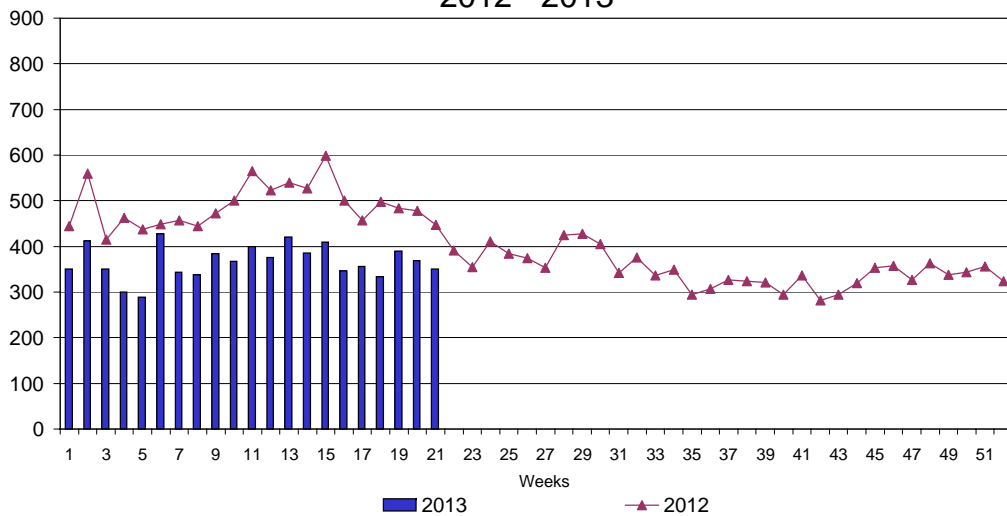
UI Claims Comparison Year to Date



UI Initial Claims 2011 - 2013



UI Exhaustions 2012 - 2013



TDI Claims Comparison Year to Date

