



Rhode Island Department of Labor and Training

Weekly Update of Claims Activity

Week Ending: October 5, 2013

Unemployment Insurance

Initial Claims – 1,236 initial claims were processed during the week ending 10/5/13, an increase of 200 from the previous week, and a decrease of 7 from a year ago. The number of initial claims filed to date is down 5.6 percent from last year and down 9.7 percent from two years ago

Continued Claims – 8,935 continued claims were processed during the week of 10/5/13, a decrease of 189 from the previous week and a decrease of 1,362 from a year ago. The number of continued claims filed to date is down 11.0 percent from last year and down 19.5 percent from two years ago.

Workshare – gives employers an alternative to layoffs by allowing employees to work reduced hours and collect a percentage of regular UI benefits to compensate for lost pay. This week, 10 initial claims and 548 continued claims were processed. An estimated 2 layoffs were prevented this week, as a result of Workshare.

Emergency Unemployment Compensation 08 – EUC08, which became effective July 6, 2008, provides up to 53 weeks of federally funded benefits to eligible individuals who exhausted their UI claims. This week there were 195 new EUC08 claims processed and 5,092 continued claims processed (2,366 under tier I, 1,552 under tier II, 894 under tier III and 280 under tier IV).

Exhaustions – 233 individuals exhausted their regular payments this week, an increase of 9 from the previous week. There were 57 individuals that exhausted EUC08.

Temporary Disability Insurance

Temporary Disability Insurance – 710 initial claims and 8,077 continued claims were processed for Temporary Disability Insurance. The average weekly TDI payment is \$437 per week. Rhode Island is currently paying an average of 11.2 weeks per new claim.

	Initial Claims			Continued Claims	TOTAL - Initial and Continued Claims			
	Total	New	Additional		Current Week	Previous Week	Year Ago	Two Years Ago
Total - All programs*	1,592	1,025	567	15,153	16,745	16,887	22,676	28,324
UI Claims	1,236	796	440	8,935	10,171	10,160	11,540	13,354
Change from:								
Previous Week	200	103	97	-189	11			
Year Ago	-7	23	-30	-1,362	-1,369			
Two Years Ago	-474	-377	-97	-2,709	-3,183			
EUC08 Claims	302	195	107	5,092	5,394	5,657	9,292	13,501
Interstate-Liable	44	29	15	578	622	614	533	473
Workshare	10	5	5	548	558	456	1,311	996
Workshare Equivalency	2	1	1	122	124	113	356	258
UI Exhaustions	-	-	-	233	233	224	295	340
EUC08 Exhaustions	-	-	-	57	57	92	114	216
TDI Claims	710	593	117	8,077	8,787	7,631	9,007	8,473
Change from:								
Previous Week	-11	0	-11	1,167	1,156			
Year Ago	-127	-86	-41	-93	-220			

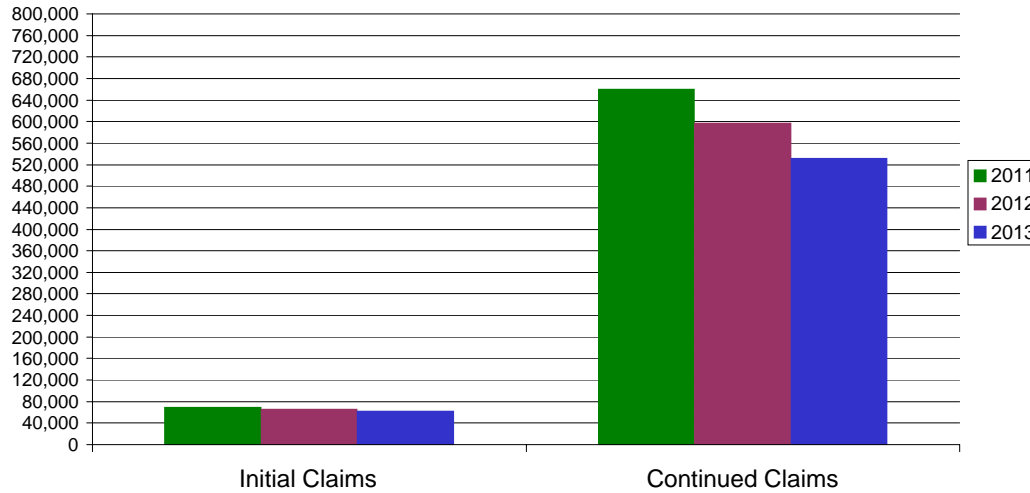
* Includes UI, EUC08, Workshare & Interstate Liable.

Equal Opportunity Employer / Program / Auxiliary aids and services available upon request to individuals with disabilities / TTY via RI Relay 711.

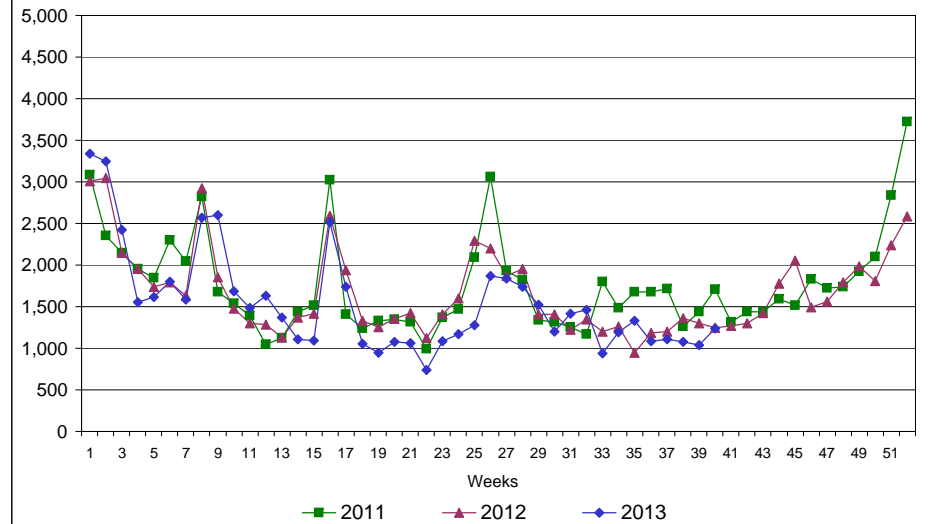
Rhode Island Department of Labor and Training

October 5, 2013

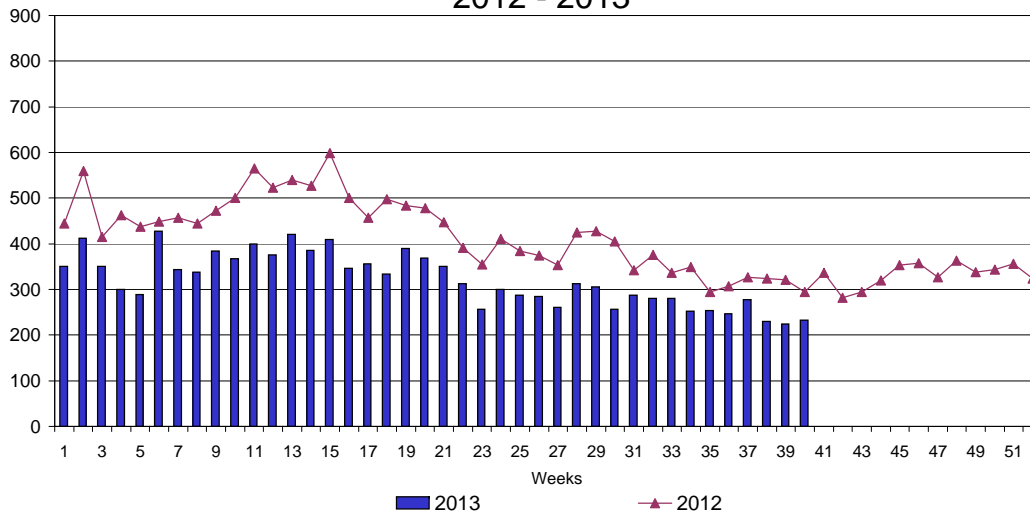
UI Claims Comparison Year to Date



UI Initial Claims 2011 - 2013



UI Exhaustions 2012 - 2013



TDI Claims Comparison Year to Date

