



Rhode Island Department of Labor and Training

Weekly Update of Claims Activity

Week Ending: June 1, 2013

Unemployment Insurance

Initial Claims – 738 initial claims were processed during the week ending 6/1/13, a decrease of 326 from the previous week, and a decrease of 388 from a year ago. The number of initial claims filed to date is down 2.1 percent from last year and down 1.8 percent from two years ago.

Continued Claims – 9,658 continued claims were processed during the week of 6/1/13, a decrease of 485 from the previous week and a decrease of 2,431 from a year ago. The number of continued claims filed to date is down 9.0 percent from last year and down 17.3 percent from two years ago.

Workshare – gives employers an alternative to layoffs by allowing employees to work reduced hours and collect a percentage of regular UI benefits to compensate for lost pay. This week, 31 initial claims and 468 continued claims were processed. An estimated 11 layoffs were prevented this week, as a result of Workshare.

Emergency Unemployment Compensation 08 – EUC08, which became effective July 6, 2008, provides up to 53 weeks of federally funded benefits to eligible individuals who exhausted their UI claims. This week there were 212 new EUC08 claims processed and 6,738 continued claims processed (2,399 under tier I, 1,879 under tier II, 1,337 under tier III and 1,123 under tier IV).

Exhaustions – 313 individuals exhausted their regular payments this week, a decrease of 38 from a year ago. There were 117 individuals that exhausted EUC08.

Temporary Disability Insurance

Temporary Disability Insurance – 811 initial claims and 5,995 continued claims were processed for Temporary Disability Insurance. The average weekly TDI payment is \$447 per week. Rhode Island is currently paying an average of 11.2 weeks per new claim.

	<u>Initial Claims</u>			<u>Continued Claims</u>	<u>TOTAL - Initial and Continued Claims</u>			
	<u>Total</u>	<u>New</u>	<u>Additional</u>		<u>Current Week</u>	<u>Previous Week</u>	<u>Year Ago</u>	<u>Two Years Ago</u>
Total - All programs*	1,091	692	399	17,309	18,400	19,590	25,827	30,194
UI Claims	738	435	303	9,658	10,396	11,207	13,215	14,032
Change from:								
Previous Week	-326	-180	-146	-485	-811			
Year Ago	-388	-254	-134	-2,431	-2,819			
Two Years Ago	-253	-106	-147	-3,383	-3,636			
EUC08 Claims	293	212	81	6,738	7,031	7,284	10,711	14,594
Interstate-Liable	29	19	10	445	474	501	520	492
Workshare	31	26	5	468	499	598	1,381	1,076
Workshare Equivalency	11	10	1	110	121	146	324	313
UI Exhaustions	-	-	-	313	313	351	391	463
EUC08 Exhaustions	-	-	-	117	117	106	209	201
TDI Claims	811	666	145	5,995	6,806	7,900	7,071	7,550
Change from:								
Previous Week	160	106	54	-1,254	-1,094			
Year Ago	111	95	16	-376	-265			

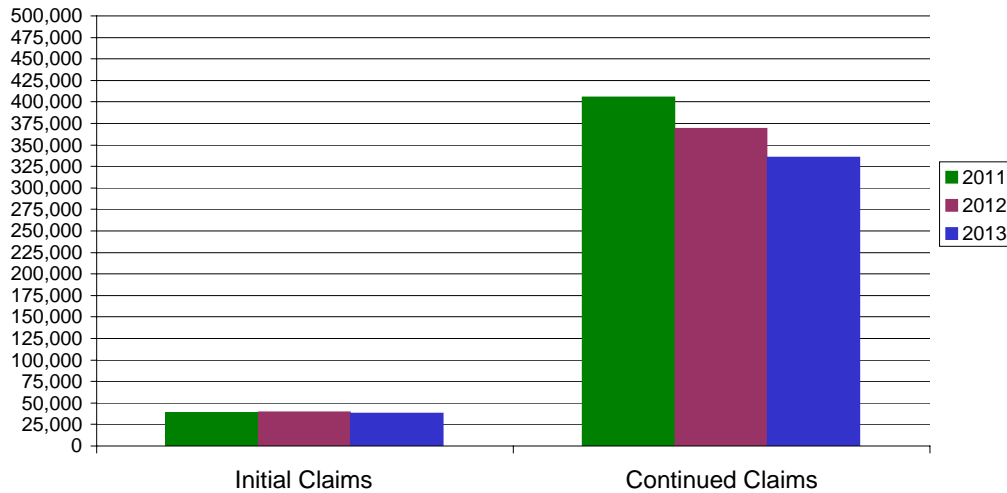
* Includes UI, EUC08, Workshare & Interstate Liable.

Equal Opportunity Employer / Program / Auxiliary aids and services available upon request to individuals with disabilities / TTY via RI Relay 711.

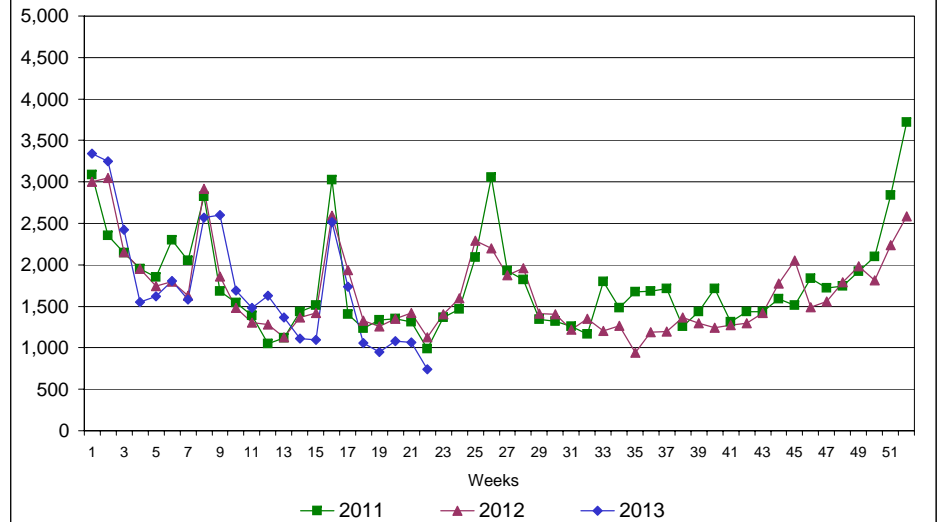
Rhode Island Department of Labor and Training

June 1, 2013

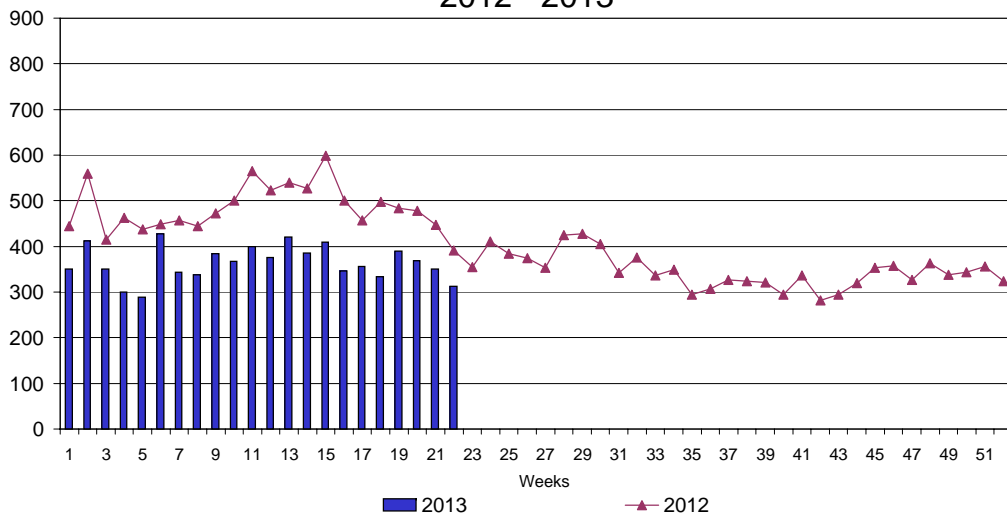
UI Claims Comparison Year to Date



UI Initial Claims 2011 - 2013



UI Exhaustions 2012 - 2013



TDI Claims Comparison Year to Date

