



Rhode Island Department of Labor and Training

Weekly Update of Claims Activity

Week Ending: June 8, 2013

Unemployment Insurance

Initial Claims – 1,082 initial claims were processed during the week ending 6/8/13, an increase of 344 from the previous week, and a decrease of 325 from a year ago. The number of initial claims filed to date is down 2.9 percent from last year and down 2.4 percent from two years ago

Continued Claims – 9,965 continued claims were processed during the week of 6/8/13, an increase of 307 from the previous week and a decrease of 2,243 from a year ago. The number of continued claims filed to date is down 9.3 percent from last year and down 17.5 percent from two years ago.

Workshare – gives employers an alternative to layoffs by allowing employees to work reduced hours and collect a percentage of regular UI benefits to compensate for lost pay. This week, 37 initial claims and 611 continued claims were processed. An estimated 9 layoffs were prevented this week, as a result of Workshare.

Emergency Unemployment Compensation 08 – EUC08, which became effective July 6, 2008, provides up to 53 weeks of federally funded benefits to eligible individuals who exhausted their UI claims. This week there were 393 new EUC08 claims processed and 6,795 continued claims processed (2,413 under tier I, 1,870 under tier II, 1,329 under tier III and 1,183 under tier IV).

Exhaustions – 256 individuals exhausted their regular payments this week, a decrease of 57 from a year ago. There were 116 individuals that exhausted EUC08.

Temporary Disability Insurance

Temporary Disability Insurance – 563 initial claims and 7,131 continued claims were processed for Temporary Disability Insurance. The average weekly TDI payment is \$438 per week. Rhode Island is currently paying an average of 11.2 weeks per new claim.

	Initial Claims			Continued Claims	TOTAL - Initial and Continued Claims			
	Total	New	Additional		Current Week	Previous Week	Year Ago	Two Years Ago
Total - All programs*	1,643	1,091	552	17,859	19,502	18,400	25,589	31,081
UI Claims	1,082	643	439	9,965	11,047	10,396	13,615	14,365
Change from:								
Previous Week	344	208	136	307	651			
Year Ago	-325	-160	-165	-2,243	-2,568			
Two Years Ago	-284	-148	-136	-3,034	-3,318			
EUC08 Claims	483	393	90	6,795	7,278	7,031	10,736	14,809
Interstate-Liable	41	22	19	488	529	474	547	534
Workshare	37	33	4	611	648	499	691	1,373
Workshare Equivalency	9	8	1	163	172	121	208	351
UI Exhaustions	-	-	-	256	256	313	355	416
EUC08 Exhaustions	-	-	-	116	116	117	171	215
TDI Claims	563	467	96	7,131	7,694	6,806	8,144	7,941
Change from:								
Previous Week	-248	-199	-49	1,136	888			
Year Ago	-243	-220	-23	-207	-450			

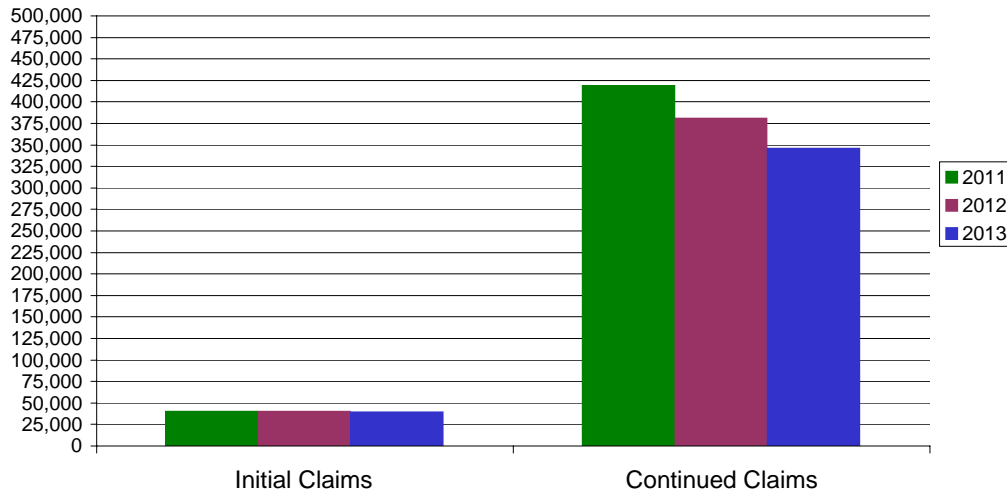
* Includes UI, EUC08, Workshare & Interstate Liable.

Equal Opportunity Employer / Program / Auxiliary aids and services available upon request to individuals with disabilities / TTY via RI Relay 711.

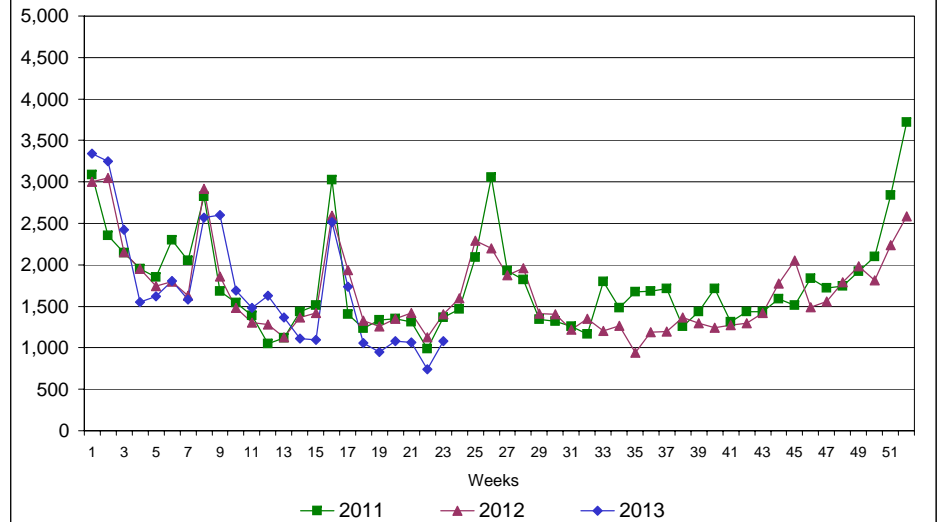
Rhode Island Department of Labor and Training

June 8, 2013

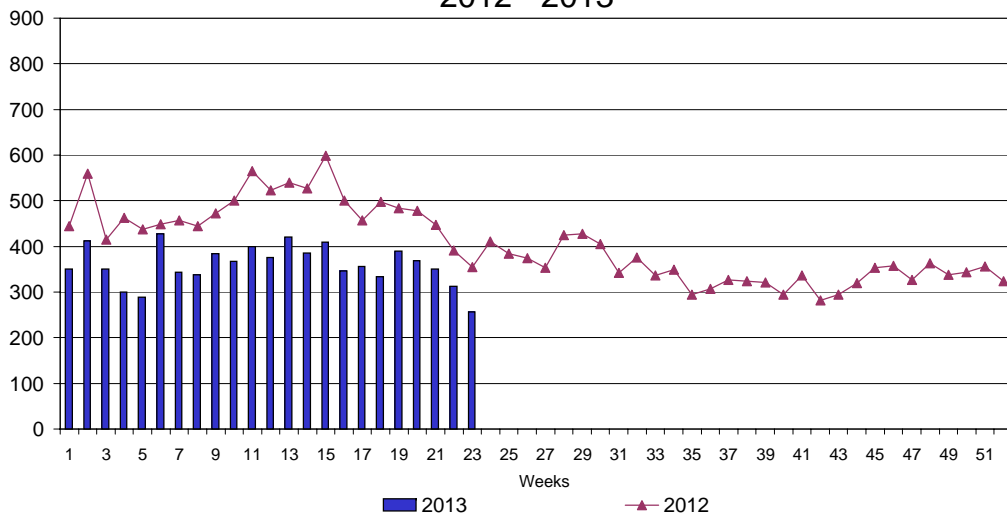
UI Claims Comparison Year to Date



UI Initial Claims 2011 - 2013



UI Exhaustions 2012 - 2013



TDI Claims Comparison Year to Date

