



## Rhode Island Department of Labor and Training

# *Weekly Update of Claims Activity*

*Week Ending: June 22, 2013*

### *Unemployment Insurance*

**Initial Claims** – 1,280 initial claims were processed during the week ending 6/22/13, an increase of 108 from the previous week, and a decrease of 1,010 from a year ago. The number of initial claims filed to date is down 5.9 percent from last year and down 4.8 percent from two years ago

**Continued Claims** – 9,881 continued claims were processed during the week of 6/22/13, an increase of 176 from the previous week and a decrease of 2,449 from a year ago. The number of continued claims filed to date is down 9.9 percent from last year and down 17.9 percent from two years ago.

**Workshare** – gives employers an alternative to layoffs by allowing employees to work reduced hours and collect a percentage of regular UI benefits to compensate for lost pay. This week, 39 initial claims and 484 continued claims were processed. An estimated 9 layoffs were prevented this week, as a result of Workshare.

**Emergency Unemployment Compensation 08** – EUC08, which became effective July 6, 2008, provides up to 53 weeks of federally funded benefits to eligible individuals who exhausted their UI claims. This week there were 254 new EUC08 claims processed and 6,548 continued claims processed (2,350 under tier I, 1,818 under tier II, 1,164 under tier III and 1,216 under tier IV).

**Exhaustions** – 288 individuals exhausted their regular payments this week, a decrease of 12 from a year ago. There were 84 individuals that exhausted EUC08.

### *Temporary Disability Insurance*

**Temporary Disability Insurance** – 632 initial claims and 7,160 continued claims were processed for Temporary Disability Insurance. The average weekly TDI payment is \$434 per week. Rhode Island is currently paying an average of 11.2 weeks per new claim.

	Initial Claims			Continued Claims	TOTAL - Initial and Continued Claims			
	Total	New	Additional		Current Week	Previous Week	Year Ago	Two Years Ago
<b>Total - All programs*</b>	1,709	1,039	670	17,406	19,115	19,040	26,414	31,556
<b>UI Claims</b>	1,280	737	543	9,881	11,161	10,877	14,620	15,170
Change from:								
Previous Week	108	-16	124	176	284			
Year Ago	-1,010	-252	-758	-2,449	-3,459			
Two Years Ago	-810	-177	-633	-3,199	-4,009			
<b>EUC08 Claims</b>	365	254	111	6,548	6,913	6,977	10,446	14,518
<b>Interstate-Liable</b>	25	16	9	493	518	578	480	494
<b>Workshare</b>	39	32	7	484	523	608	868	1,374
<b>Workshare Equivalency</b>	9	7	2	137	146	146	301	409
<b>UI Exhaustions</b>	-	-	-	288	288	300	384	372
<b>EUC08 Exhaustions</b>	-	-	-	84	84	107	157	191
<b>TDI Claims</b>	632	526	106	7,160	7,792	7,550	8,669	8,329
Change from:								
Previous Week	-555	-457	-98	797	242			
Year Ago	70	63	7	-947	-877			

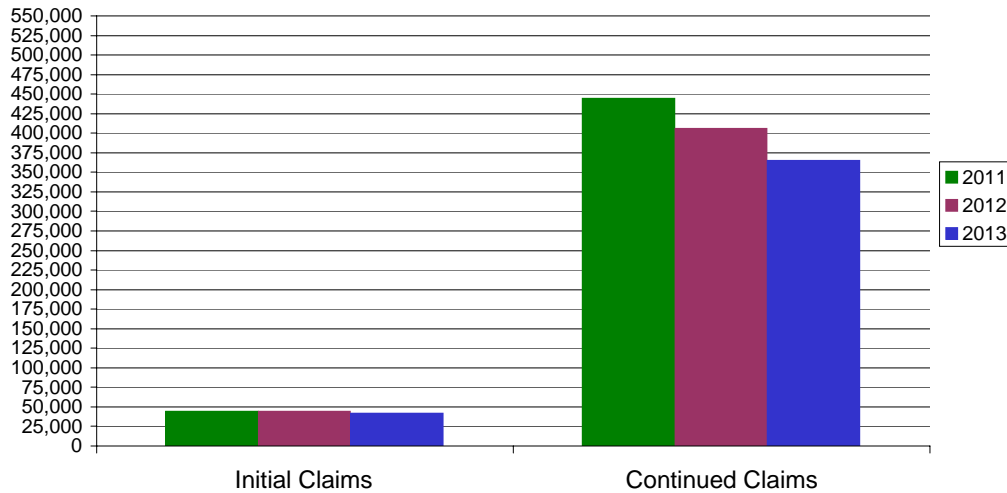
\* Includes UI, EUC08, Workshare & Interstate Liable.

Equal Opportunity Employer / Program / Auxiliary aids and services available upon request to individuals with disabilities / TTY via RI Relay 711.

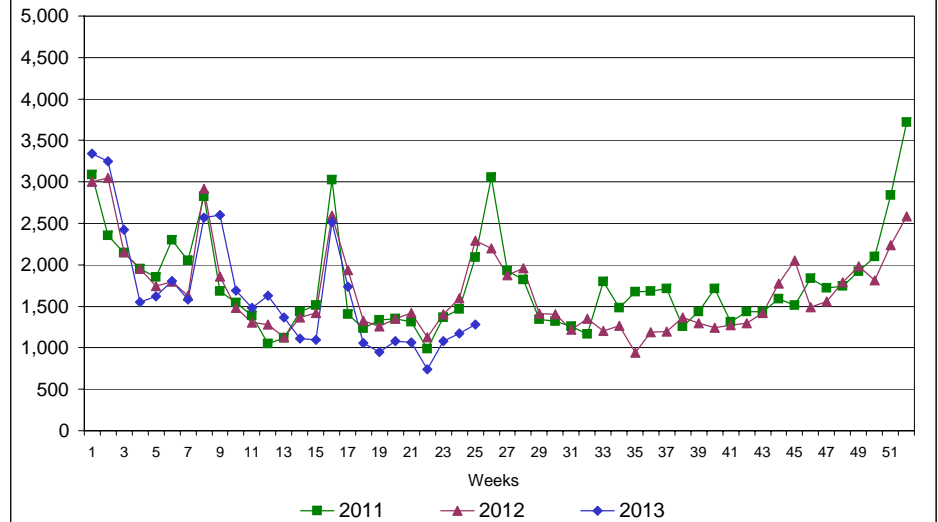
# Rhode Island Department of Labor and Training

## June 22, 2013

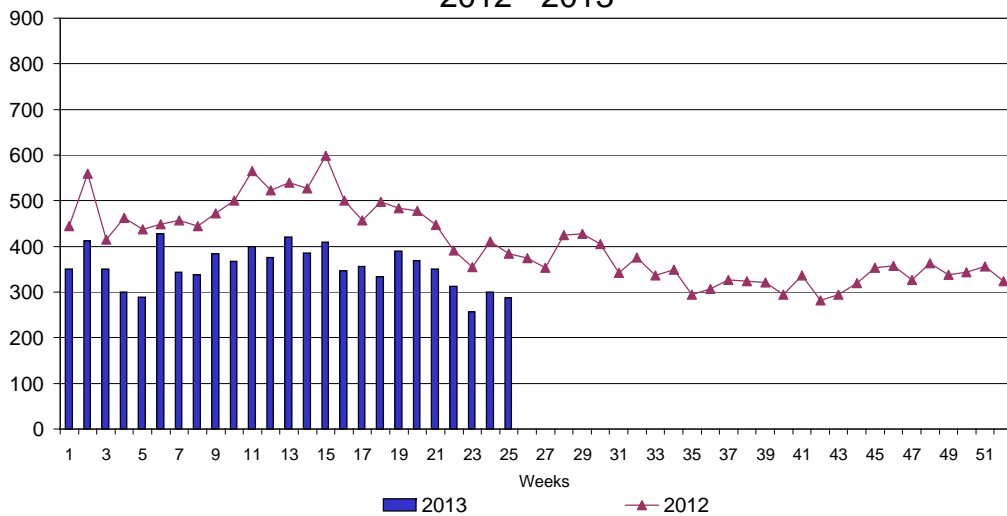
### UI Claims Comparison Year to Date



### UI Initial Claims 2011 - 2013



### UI Exhaustions 2012 - 2013



### TDI Claims Comparison Year to Date

