



Rhode Island Department of Labor and Training

Weekly Update of Claims Activity

Week Ending: June 29, 2013

Unemployment Insurance

Initial Claims – 1,870 initial claims were processed during the week ending 6/29/13, an increase of 590 from the previous week, and a decrease of 332 from a year ago. The number of initial claims filed to date is down 6.3 percent from last year and down 7.0 percent from two years ago

Continued Claims – 10,063 continued claims were processed during the week of 6/29/13, an increase of 182 from the previous week and a decrease of 3,752 from a year ago. The number of continued claims filed to date is down 10.5 percent from last year and down 18.1 percent from two years ago.

Workshare – gives employers an alternative to layoffs by allowing employees to work reduced hours and collect a percentage of regular UI benefits to compensate for lost pay. This week, 75 initial claims and 559 continued claims were processed. An estimated 16 layoffs were prevented this week, as a result of Workshare.

Emergency Unemployment Compensation 08 – EUC08, which became effective July 6, 2008, provides up to 53 weeks of federally funded benefits to eligible individuals who exhausted their UI claims. This week there were 300 new EUC08 claims processed and 6,532 continued claims processed (2,319 under tier I, 1,795 under tier II, 1,163 under tier III and 1,255 under tier IV).

Exhaustions – 284 individuals exhausted their regular payments this week, a decrease of 4 from a year ago. There were 93 individuals that exhausted EUC08.

Temporary Disability Insurance

Temporary Disability Insurance – 779 initial claims and 6,683 continued claims were processed for Temporary Disability Insurance. The average weekly TDI payment is \$431 per week. Rhode Island is currently paying an average of 11.2 weeks per new claim.

	<u>Initial Claims</u>			<u>Continued Claims</u>	<u>TOTAL - Initial and Continued Claims</u>			
	<u>Total</u>	<u>New</u>	<u>Additional</u>		<u>Current Week</u>	<u>Previous Week</u>	<u>Year Ago</u>	<u>Two Years Ago</u>
Total - All programs*	2,423	1,243	1,180	17,659	20,082	19,115	28,033	32,056
UI Claims	1,870	855	1,015	10,063	11,933	11,161	16,017	16,524
Change from:								
Previous Week	590	118	472	182	772			
Year Ago	-332	-176	-156	-3,752	-4,084			
Two Years Ago	-1,188	-732	-456	-3,403	-4,591			
EUC08 Claims	451	300	151	6,532	6,983	6,913	10,421	14,293
Interstate-Liable	27	16	11	505	532	518	473	477
Workshare	75	72	3	559	634	523	1,122	762
Workshare Equivalency	16	15	1	140	156	146	267	206
UI Exhaustions	-	-	-	284	284	288	375	373
EUC08 Exhaustions	-	-	-	93	93	84	156	186
TDI Claims	779	651	128	6,683	7,462	7,792	7,815	8,032
Change from:								
Previous Week	147	125	22	-477	-330			
Year Ago	-235	-207	-28	-118	-353			

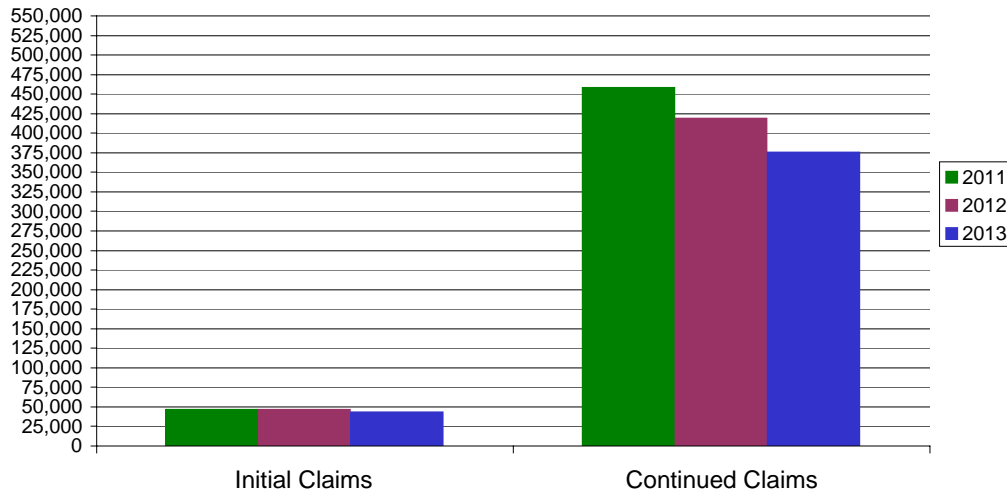
* Includes UI, EUC08, Workshare & Interstate Liable.

Equal Opportunity Employer / Program / Auxiliary aids and services available upon request to individuals with disabilities / TTY via RI Relay 711.

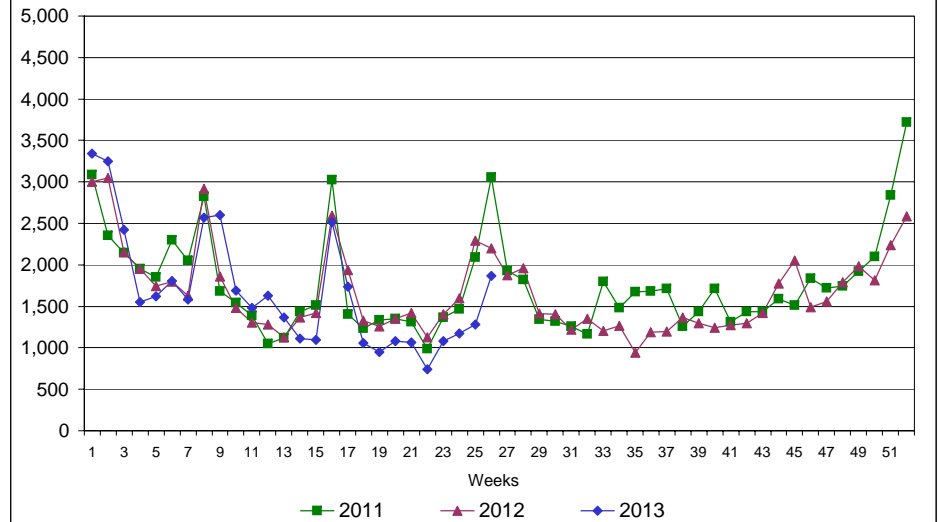
Rhode Island Department of Labor and Training

June 29, 2013

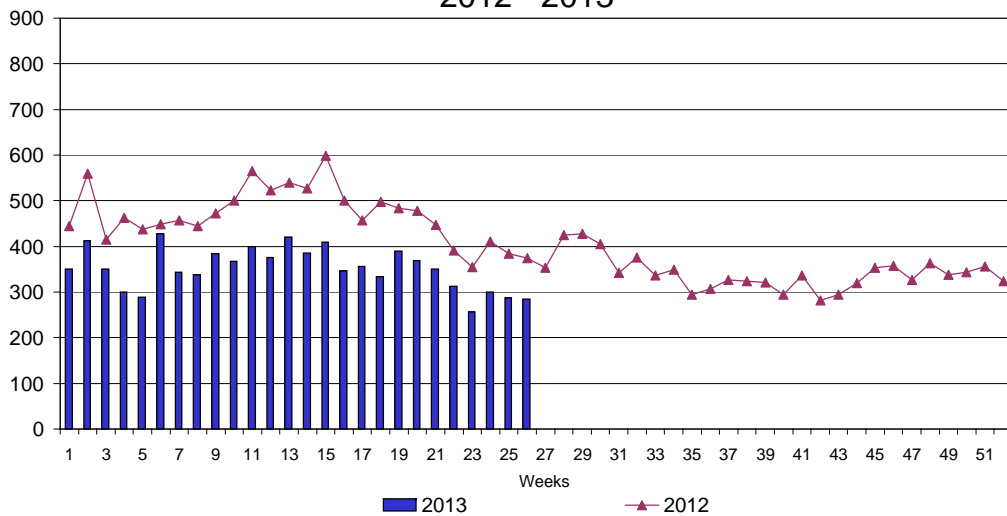
UI Claims Comparison Year to Date



UI Initial Claims 2011 - 2013



UI Exhaustions 2012 - 2013



TDI Claims Comparison Year to Date

