



## Rhode Island Department of Labor and Training

# *Weekly Update of Claims Activity*

*Week Ending: July 6, 2013*

### *Unemployment Insurance*

**Initial Claims** – 1,841 initial claims were processed during the week ending 7/6/13, a decrease of 29 from the previous week, and a decrease of 32 from a year ago. The number of initial claims filed to date is down 6.1 percent from last year and down 6.9 percent from two years ago

**Continued Claims** – 10,836 continued claims were processed during the week of 7/6/13, an increase of 773 from the previous week and a decrease of 3,285 from a year ago. The number of continued claims filed to date is down 10.9 percent from last year and down 18.4 percent from two years ago.

**Workshare** – gives employers an alternative to layoffs by allowing employees to work reduced hours and collect a percentage of regular UI benefits to compensate for lost pay. This week, 61 initial claims and 257 continued claims were processed. An estimated 12 layoffs were prevented this week, as a result of Workshare.

**Emergency Unemployment Compensation 08** – EUC08, which became effective July 6, 2008, provides up to 53 weeks of federally funded benefits to eligible individuals who exhausted their UI claims. This week there were 252 new EUC08 claims processed and 6,262 continued claims processed (2,213 under tier I, 1,756 under tier II, 1,054 under tier III and 1,239 under tier IV).

**Exhaustions** – 261 individuals exhausted their regular payments this week, a decrease of 23 from a year ago. There were 132 individuals that exhausted EUC08.

### *Temporary Disability Insurance*

**Temporary Disability Insurance** – 408 initial claims and 7,114 continued claims were processed for Temporary Disability Insurance. The average weekly TDI payment is \$443 per week. Rhode Island is currently paying an average of 11.3 weeks per new claim.

	<u>Initial Claims</u>			<u>Continued Claims</u>	<u>TOTAL - Initial and Continued Claims</u>			
	<u>Total</u>	<u>New</u>	<u>Additional</u>		<u>Current Week</u>	<u>Previous Week</u>	<u>Year Ago</u>	<u>Two Years Ago</u>
<b>Total - All programs*</b>	2,272	1,228	1,044	17,833	20,105	20,082	27,053	32,092
<b>UI Claims</b>	1,841	910	931	10,836	12,677	11,933	15,994	16,853
Change from:								
Previous Week	-29	55	-84	773	744			
Year Ago	-32	-177	145	-3,285	-3,317			
Two Years Ago	-89	-238	149	-4,087	-4,176			
<b>EUC08 Claims</b>	344	252	92	6,262	6,606	6,983	9,985	13,930
<b>Interstate-Liable</b>	26	16	10	478	504	532	472	425
<b>Workshare</b>	61	50	11	257	318	634	602	884
<b>Workshare Equivalency</b>	12	10	2	75	87	156	257	236
<b>UI Exhaustions</b>	-	-	-	261	261	284	353	352
<b>EUC08 Exhaustions</b>	-	-	-	132	132	93	150	200
<b>TDI Claims</b>	408	319	89	7,114	7,522	7,462	7,276	7,298
Change from:								
Previous Week	-371	-332	-39	431	60			
Year Ago	-212	-198	-14	458	246			

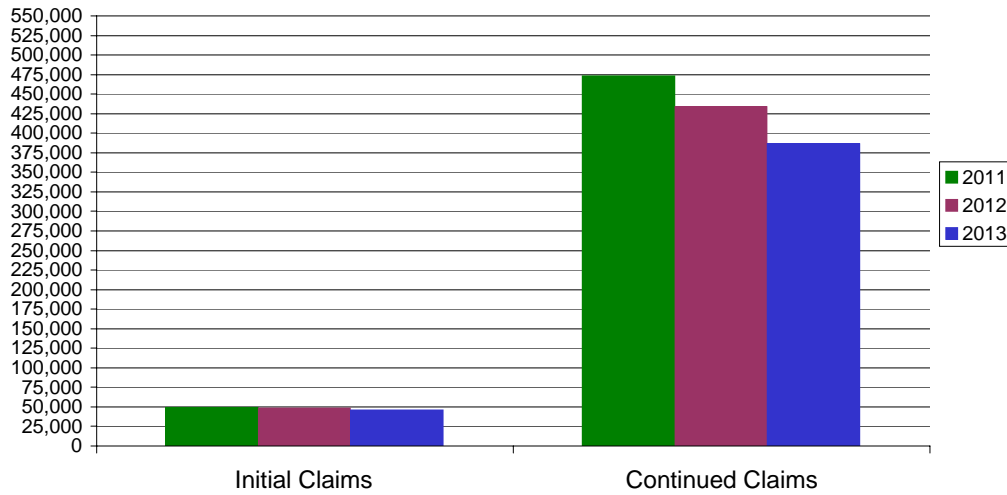
\* Includes UI, EUC08, Workshare & Interstate Liable.

Equal Opportunity Employer / Program / Auxiliary aids and services available upon request to individuals with disabilities / TTY via RI Relay 711.

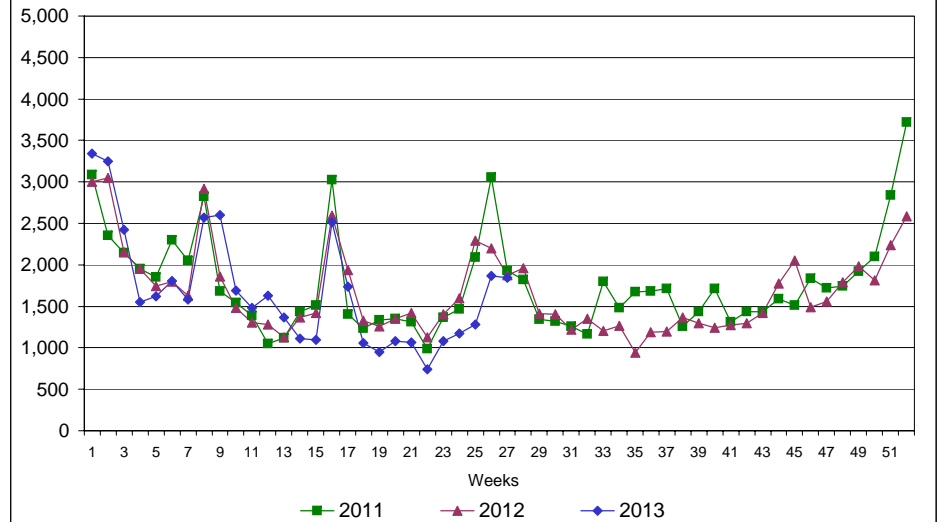
# Rhode Island Department of Labor and Training

## July 6, 2013

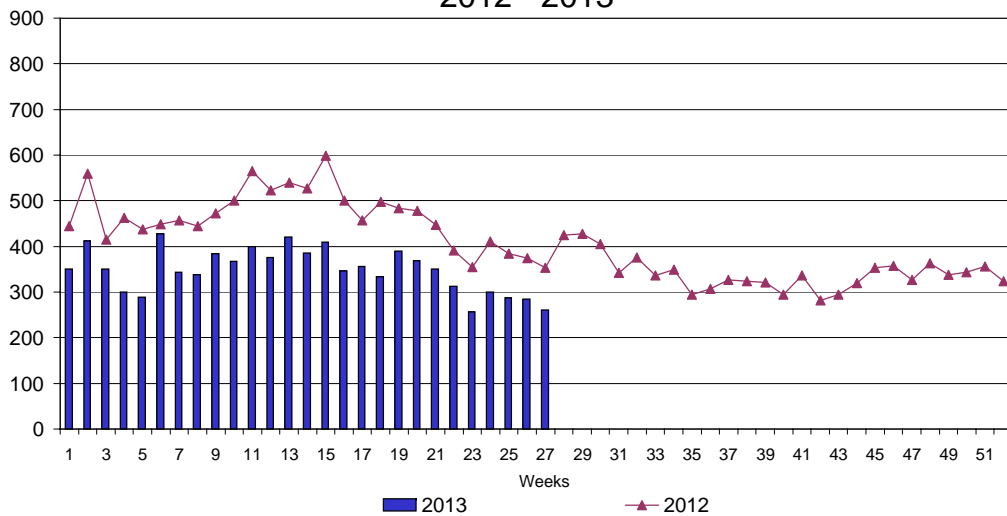
### UI Claims Comparison Year to Date



### UI Initial Claims 2011 - 2013



### UI Exhaustions 2012 - 2013



### TDI Claims Comparison Year to Date

