



Rhode Island Department of Labor and Training

Weekly Update of Claims Activity

Week Ending: July 27, 2013

Unemployment Insurance

Initial Claims – 1,197 initial claims were processed during the week ending 7/27/13, a decrease of 327 from the previous week, and a decrease of 208 from a year ago. The number of initial claims filed to date is down 6.2 percent from last year and down 6.3 percent from two years ago

Continued Claims – 11,991 continued claims were processed during the week of 7/27/13, a decrease of 37 from the previous week and a decrease of 2,470 from a year ago. The number of continued claims filed to date is down 11.5 percent from last year and down 18.9 percent from two years ago.

Workshare – gives employers an alternative to layoffs by allowing employees to work reduced hours and collect a percentage of regular UI benefits to compensate for lost pay. This week, 5 initial claims and 612 continued claims were processed. An estimated 1 layoffs were prevented this week, as a result of Workshare.

Emergency Unemployment Compensation 08 – EUC08, which became effective July 6, 2008, provides up to 53 weeks of federally funded benefits to eligible individuals who exhausted their UI claims. This week there were 284 new EUC08 claims processed and 6,042 continued claims processed (2,198 under tier I, 1,669 under tier II, 973 under tier III and 1,202 under tier IV).

Exhaustions – 256 individuals exhausted their regular payments this week, a decrease of 50 from a year ago. There were 116 individuals that exhausted EUC08.

Temporary Disability Insurance

Temporary Disability Insurance – 664 initial claims and 7,356 continued claims were processed for Temporary Disability Insurance. The average weekly TDI payment is \$443 per week. Rhode Island is currently paying an average of 11.3 weeks per new claim.

	Initial Claims			Continued Claims	TOTAL - Initial and Continued Claims			
	Total	New	Additional		Current Week	Previous Week	Year Ago	Two Years Ago
Total - All programs*	1,652	1,063	589	19,134	20,786	20,819	27,275	32,139
UI Claims	1,197	761	436	11,991	13,188	13,552	15,866	16,974
Change from:								
Previous Week	-327	-132	-195	-37	-364			
Year Ago	-208	-41	-167	-2,470	-2,678			
Two Years Ago	-120	-17	-103	-3,666	-3,786			
EUC08 Claims	424	284	140	6,042	6,466	6,171	10,000	13,893
Interstate-Liable	26	18	8	489	515	541	490	461
Workshare	5	0	5	612	617	555	919	811
Workshare Equivalency	1	0	1	138	139	144	238	262
UI Exhaustions	-	-	-	256	256	306	405	444
EUC08 Exhaustions	-	-	-	116	116	123	169	182
TDI Claims	664	545	119	7,356	8,020	7,213	8,346	9,329
Change from:								
Previous Week	13	5	8	794	807			
Year Ago	-343	-291	-52	17	-326			

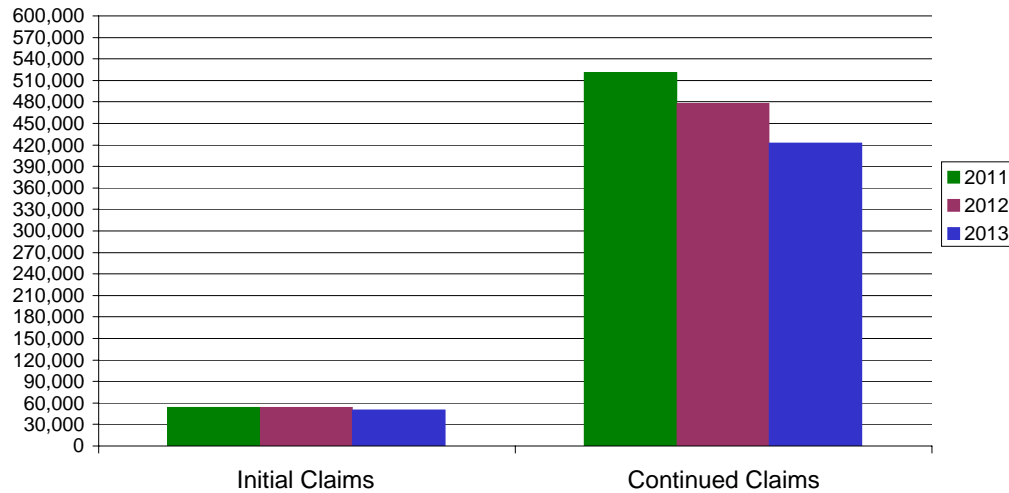
* Includes UI, EUC08, Workshare & Interstate Liable.

Equal Opportunity Employer / Program / Auxiliary aids and services available upon request to individuals with disabilities / TTY via RI Relay 711.

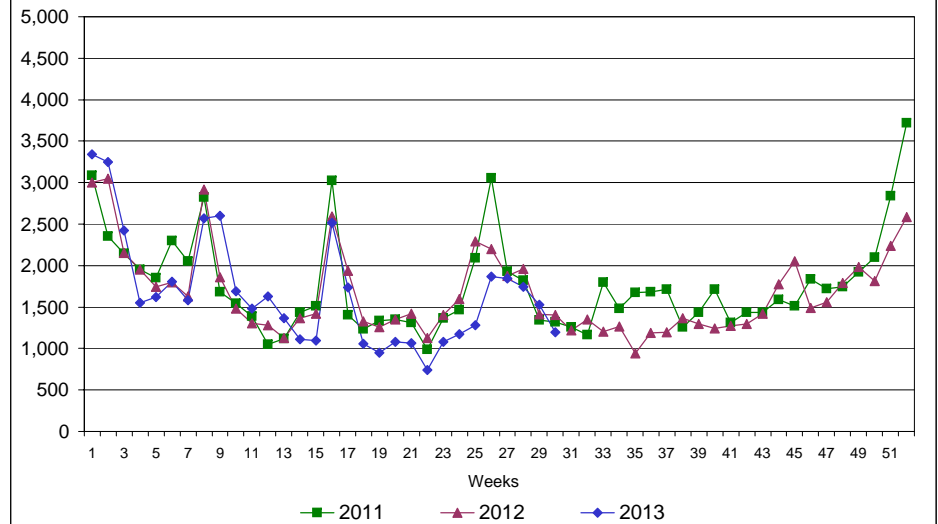
Rhode Island Department of Labor and Training

July 27, 2013

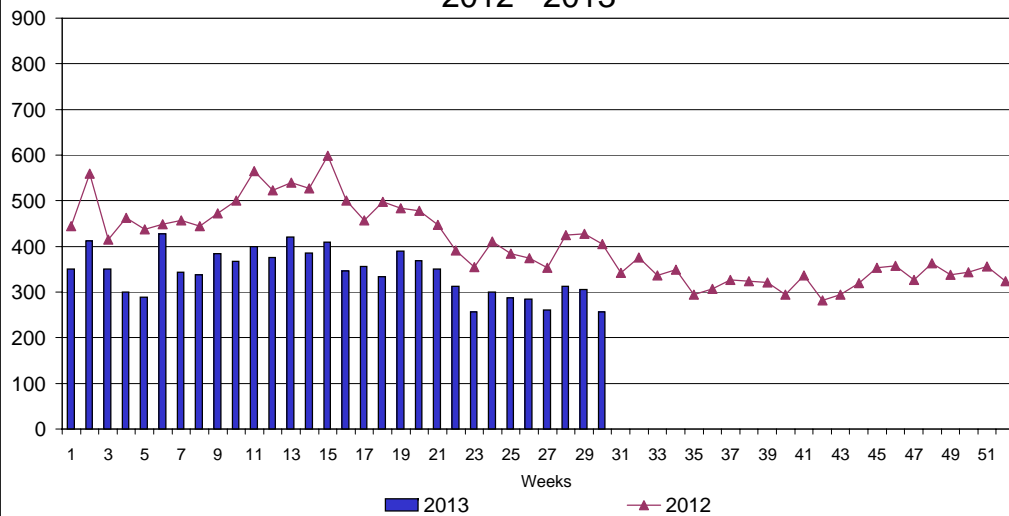
UI Claims Comparison Year to Date



UI Initial Claims 2011 - 2013



UI Exhaustions 2012 - 2013



TDI Claims Comparison Year to Date

