



Rhode Island Department of Labor and Training

Weekly Update of Claims Activity

Week Ending: August 3, 2013

Unemployment Insurance

Initial Claims – 1,416 initial claims were processed during the week ending 8/3/13, an increase of 219 from the previous week, and an increase of 194 from a year ago. The number of initial claims filed to date is down 5.7 percent from last year and down 5.9 percent from two years ago.

Continued Claims – 12,357 continued claims were processed during the week of 8/3/13, an increase of 366 from the previous week and a decrease of 1,535 from a year ago. The number of continued claims filed to date is down 11.5 percent from last year and down 18.9 percent from two years ago.

Workshare – gives employers an alternative to layoffs by allowing employees to work reduced hours and collect a percentage of regular UI benefits to compensate for lost pay. This week, 65 initial claims and 354 continued claims were processed. An estimated 14 layoffs were prevented this week, as a result of Workshare.

Emergency Unemployment Compensation 08 – EUC08, which became effective July 6, 2008, provides up to 53 weeks of federally funded benefits to eligible individuals who exhausted their UI claims. This week there were 298 new EUC08 claims processed and 6,187 continued claims processed (2,296 under tier I, 1,711 under tier II, 972 under tier III and 1,208 under tier IV).

Exhaustions – 288 individuals exhausted their regular payments this week, an increase of 32 from a year ago. There were 106 individuals that exhausted EUC08.

Temporary Disability Insurance

Temporary Disability Insurance – 853 initial claims and 7,971 continued claims were processed for Temporary Disability Insurance. The average weekly TDI payment is \$441 per week. Rhode Island is currently paying an average of 11.3 weeks per new claim.

	Initial Claims			Continued Claims	TOTAL - Initial and Continued Claims			
	Total	New	Additional		Current Week	Previous Week	Year Ago	Two Years Ago
Total - All programs*	1,948	1,305	643	19,421	21,369	20,786	26,012	32,068
UI Claims	1,416	967	449	12,357	13,773	13,188	15,114	16,722
Change from:								
Previous Week	219	206	13	366	585			
Year Ago	194	284	-90	-1,535	-1,341			
Two Years Ago	162	241	-79	-3,111	-2,949			
EUC08 Claims	439	298	141	6,187	6,626	6,466	9,718	14,016
Interstate-Liable	28	18	10	523	551	515	485	495
Workshare	65	22	43	354	419	617	695	835
Workshare Equivalency	14	6	8	80	94	139	181	199
UI Exhaustions	-	-	-	288	288	256	342	406
EUC08 Exhaustions	-	-	-	106	106	116	149	153
TDI Claims	853	715	138	7,971	8,824	8,020	9,474	8,377
Change from:								
Previous Week	189	170	19	615	804			
Year Ago	71	66	5	-721	-650			

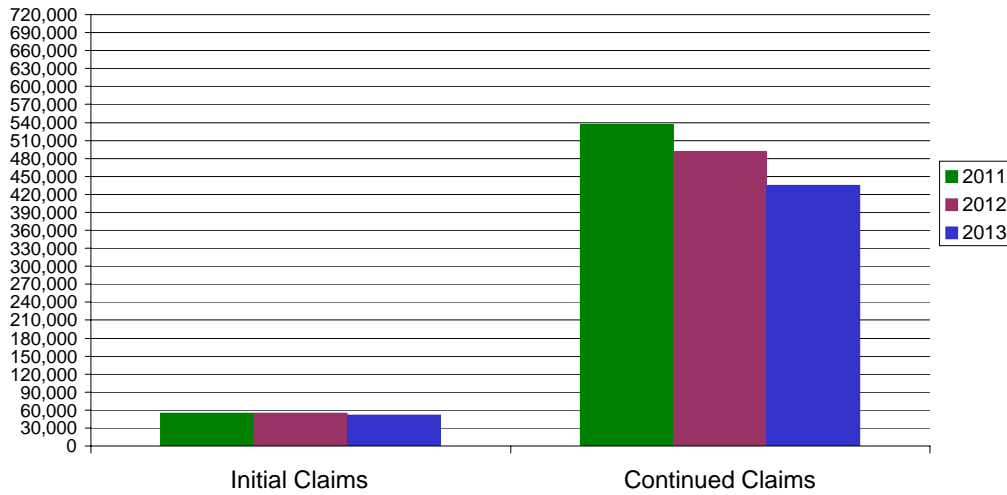
* Includes UI, EUC08, Workshare & Interstate Liable.

Equal Opportunity Employer / Program / Auxiliary aids and services available upon request to individuals with disabilities / TTY via RI Relay 711.

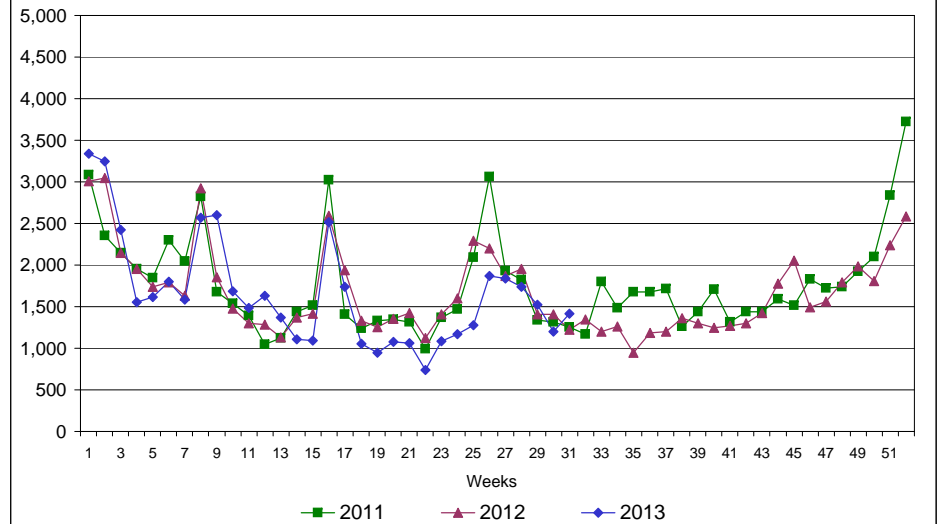
Rhode Island Department of Labor and Training

August 3, 2013

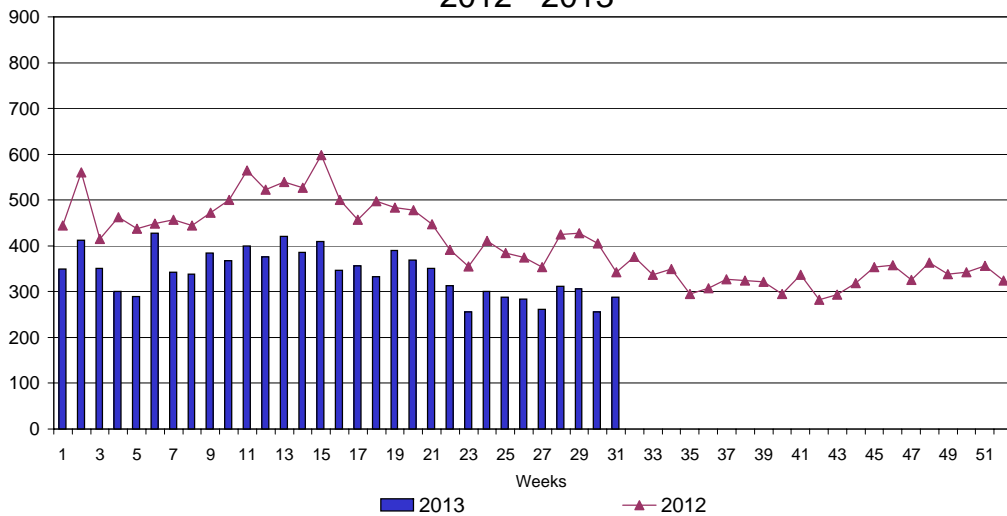
UI Claims Comparison Year to Date



UI Initial Claims 2011 - 2013



UI Exhaustions 2012 - 2013



TDI Claims Comparison Year to Date

