



Rhode Island Department of Labor and Training

Weekly Update of Claims Activity

Week Ending: August 10, 2013

Unemployment Insurance

Initial Claims – 1,464 initial claims were processed during the week ending 8/10/13, an increase of 48 from the previous week, and an increase of 115 from a year ago. The number of initial claims filed to date is down 5.3 percent from last year and down 5.2 percent from two years ago.

Continued Claims – 12,329 continued claims were processed during the week of 8/10/13, a decrease of 28 from the previous week and a decrease of 1,191 from a year ago. The number of continued claims filed to date is down 11.4 percent from last year and down 18.9 percent from two years ago.

Workshare – gives employers an alternative to layoffs by allowing employees to work reduced hours and collect a percentage of regular UI benefits to compensate for lost pay. This week, 5 initial claims and 68 continued claims were processed. An estimated 1 layoff was prevented this week, as a result of Workshare.

Emergency Unemployment Compensation 08 – EUC08, which became effective July 6, 2008, provides up to 53 weeks of federally funded benefits to eligible individuals who exhausted their UI claims. This week there were 309 new EUC08 claims processed and 6,265 continued claims processed (2,361 under tier I, 1,741 under tier II, 978 under tier III and 1,185 under tier IV).

Exhaustions – 280 individuals exhausted their regular payments this week, a decrease of 8 from the previous week. There were 114 individuals that exhausted EUC08.

Temporary Disability Insurance

Temporary Disability Insurance – 1,052 initial claims and 7,102 continued claims were processed for Temporary Disability Insurance. The average weekly TDI payment is \$439 per week. Rhode Island is currently paying an average of 11.3 weeks per new claim.

	Initial Claims			Continued Claims	TOTAL - Initial and Continued Claims			
	Total	New	Additional		Current Week	Previous Week	Year Ago	Two Years Ago
Total - All programs*	2,002	1,313	689	19,221	21,223	21,369	25,792	31,775
UI Claims	1,464	966	498	12,329	13,793	13,773	14,869	16,351
Change from:								
Previous Week	48	-1	49	-28	20			
Year Ago	115	203	-88	-1,191	-1,076			
Two Years Ago	298	308	-10	-2,856	-2,558			
EUC08 Claims	482	309	173	6,265	6,747	6,626	9,663	13,917
Interstate-Liable	51	34	17	559	610	551	476	444
Workshare	5	4	1	68	73	419	784	1,063
Workshare Equivalency	1	1	0	20	21	94	207	267
UI Exhaustions	-	-	-	280	280	288	376	472
EUC08 Exhaustions	-	-	-	114	114	106	152	215
TDI Claims	1,052	909	143	7,102	8,154	8,824	8,372	7,753
Change from:								
Previous Week	199	194	5	-869	-670			
Year Ago	37	76	-39	-255	-218			

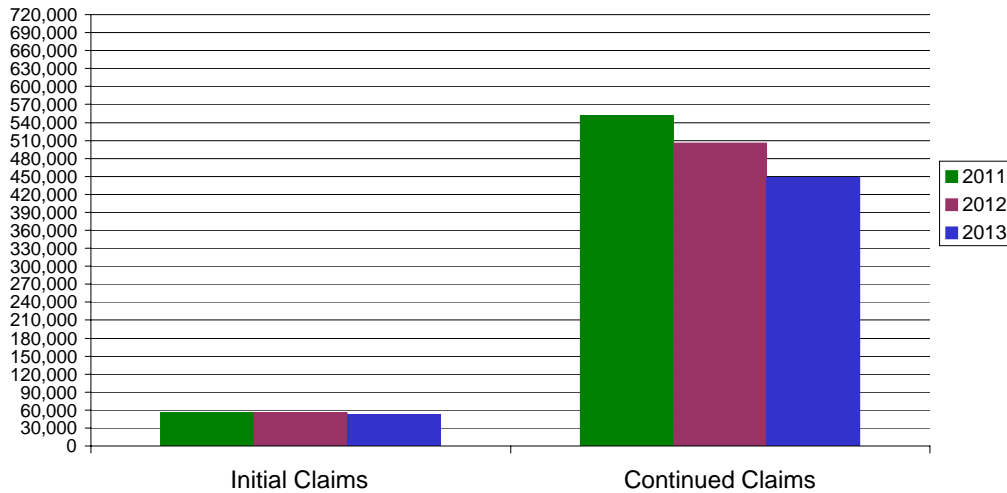
* Includes UI, EUC08, Workshare & Interstate Liable.

Equal Opportunity Employer / Program / Auxiliary aids and services available upon request to individuals with disabilities / TTY via RI Relay 711.

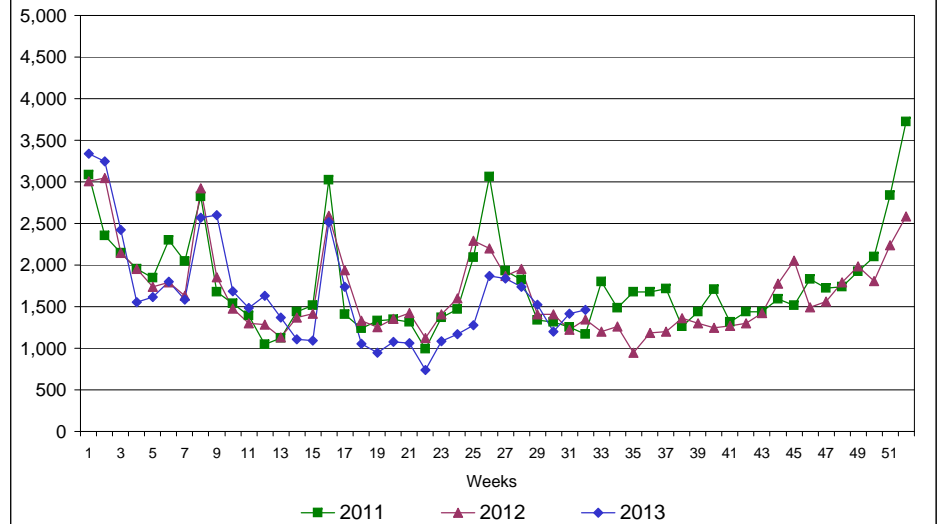
Rhode Island Department of Labor and Training

August 10, 2013

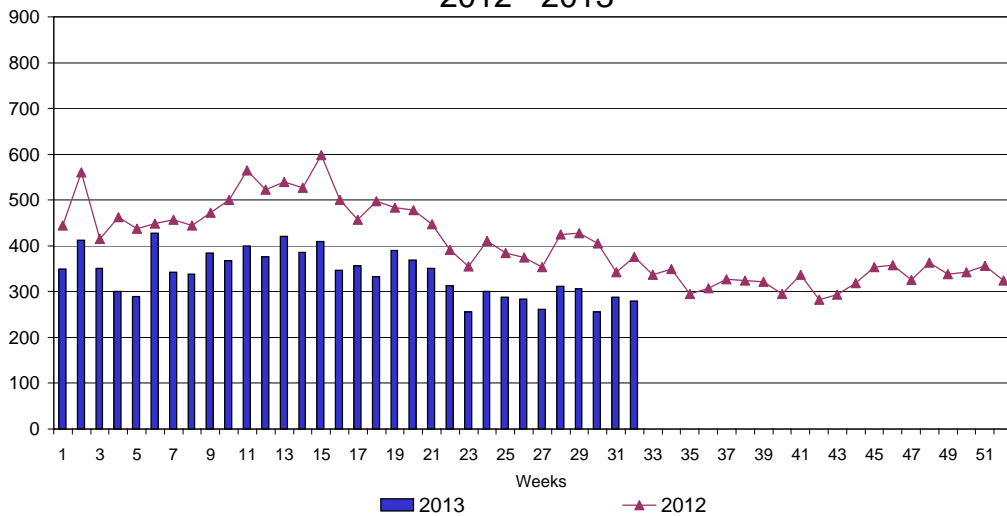
UI Claims Comparison Year to Date



UI Initial Claims 2011 - 2013



UI Exhaustions 2012 - 2013



TDI Claims Comparison Year to Date

