



Rhode Island Department of Labor and Training

Weekly Update of Claims Activity

Week Ending: August 17, 2013

Unemployment Insurance

Initial Claims – 935 initial claims were processed during the week ending 8/17/13, a decrease of 529 from the previous week, and a decrease of 265 from a year ago. The number of initial claims filed to date is down 5.7 percent from last year and down 6.6 percent from two years ago.

Continued Claims – 11,922 continued claims were processed during the week of 8/17/13, a decrease of 407 from the previous week and a decrease of 1,078 from a year ago. The number of continued claims filed to date is down 11.4 percent from last year and down 19.0 percent from two years ago.

Workshare – gives employers an alternative to layoffs by allowing employees to work reduced hours and collect a percentage of regular UI benefits to compensate for lost pay. This week, 60 initial claims and 442 continued claims were processed. An estimated 13 layoffs were prevented this week, as a result of Workshare.

Emergency Unemployment Compensation 08 – EUC08, which became effective July 6, 2008, provides up to 53 weeks of federally funded benefits to eligible individuals who exhausted their UI claims. This week there were 220 new EUC08 claims processed and 5,902 continued claims processed (2,242 under tier I, 1,645 under tier II, 919 under tier III and 1,096 under tier IV).

Exhaustions – 280 individuals exhausted their regular payments this week, no change from the previous week. There were 142 individuals that exhausted EUC08.

Temporary Disability Insurance

Temporary Disability Insurance – 545 initial claims and 6,646 continued claims were processed for Temporary Disability Insurance. The average weekly TDI payment is \$441 per week. Rhode Island is currently paying an average of 11.3 weeks per new claim.

	<u>Initial Claims</u>			<u>Continued Claims</u>	<u>TOTAL - Initial and Continued Claims</u>			
	<u>Total</u>	<u>New</u>	<u>Additional</u>		<u>Current Week</u>	<u>Previous Week</u>	<u>Year Ago</u>	<u>Two Years Ago</u>
Total - All programs*	1,347	805	542	18,793	20,140	21,223	24,386	32,541
UI Claims	935	562	373	11,922	12,857	13,793	14,200	17,194
Change from:								
Previous Week	-529	-404	-125	-407	-936			
Year Ago	-265	-110	-155	-1,078	-1,343			
Two Years Ago	-864	-603	-261	-3,473	-4,337			
EUC08 Claims	328	220	108	5,902	6,230	6,747	9,192	13,964
Interstate-Liable	24	16	8	527	551	610	440	453
Workshare	60	7	53	442	502	73	554	930
Workshare Equivalency	13	2	11	108	121	21	195	293
UI Exhaustions	-	-	-	280	280	280	337	429
EUC08 Exhaustions	-	-	-	142	142	114	151	250
TDI Claims	545	463	82	6,646	7,191	8,154	7,810	9,150
Change from:								
Previous Week	-507	-446	-61	-456	-963			
Year Ago	-140	-116	-24	-479	-619			

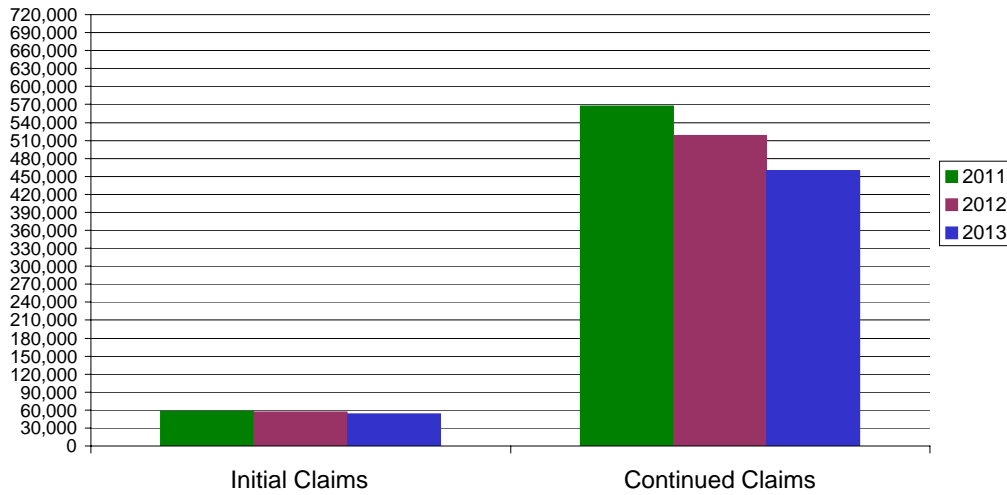
* Includes UI, EUC08, Workshare & Interstate Liable.

Equal Opportunity Employer / Program / Auxiliary aids and services available upon request to individuals with disabilities / TTY via RI Relay 711.

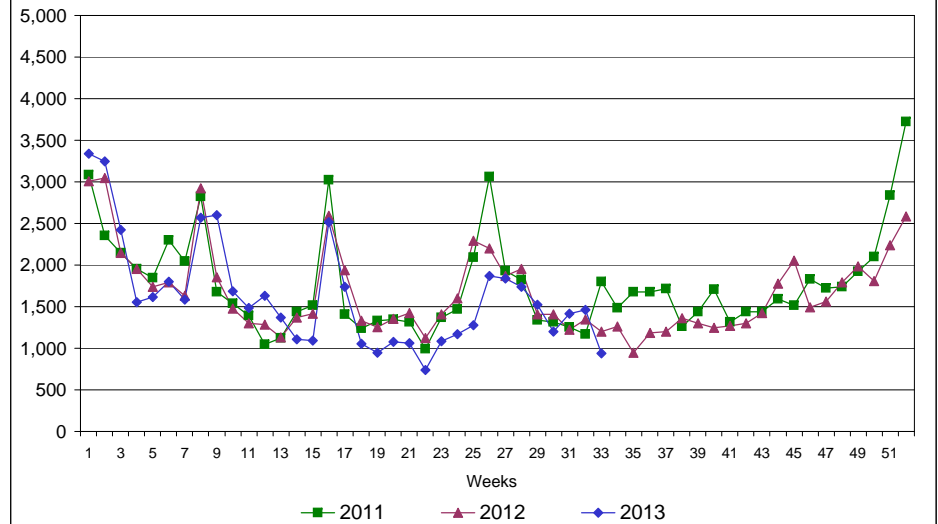
Rhode Island Department of Labor and Training

August 17, 2013

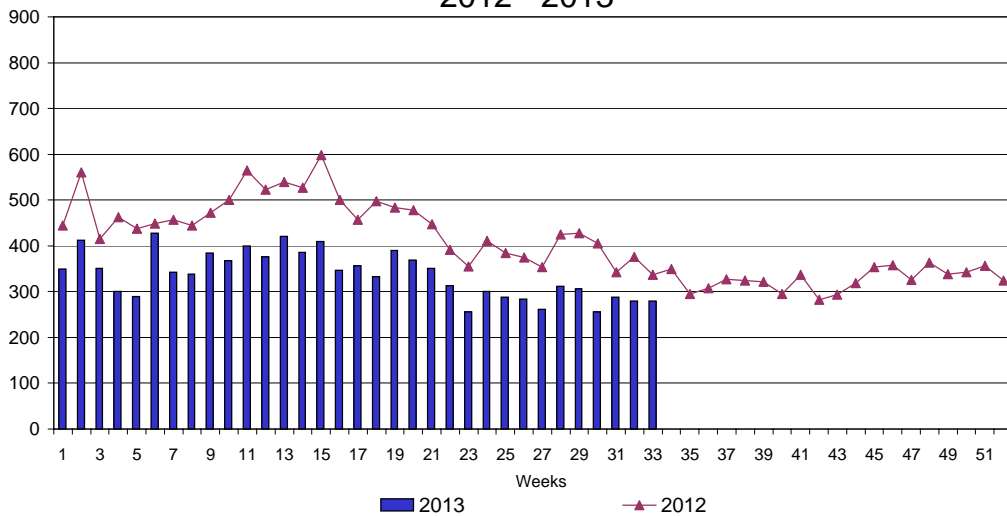
UI Claims Comparison Year to Date



UI Initial Claims 2011 - 2013



UI Exhaustions 2012 - 2013



TDI Claims Comparison Year to Date

