



Rhode Island Department of Labor and Training

Weekly Update of Claims Activity

Week Ending: August 24, 2013

Unemployment Insurance

Initial Claims – 1,191 initial claims were processed during the week ending 8/24/13, an increase of 256 from the previous week, and a decrease of 73 from a year ago. The number of initial claims filed to date is down 5.7 percent from last year and down 6.9 percent from two years ago

Continued Claims – 12,392 continued claims were processed during the week of 8/24/13, an increase of 470 from the previous week and a decrease of 367 from a year ago. The number of continued claims filed to date is down 11.1 percent from last year and down 19.1 percent from two years ago.

Workshare – gives employers an alternative to layoffs by allowing employees to work reduced hours and collect a percentage of regular UI benefits to compensate for lost pay. This week, 65 initial claims and 699 continued claims were processed. An estimated 13 layoffs were prevented this week, as a result of Workshare.

Emergency Unemployment Compensation 08 – EUC08, which became effective July 6, 2008, provides up to 53 weeks of federally funded benefits to eligible individuals who exhausted their UI claims. This week there were 303 new EUC08 claims processed and 6,169 continued claims processed (2,432 under tier I, 1,692 under tier II, 971 under tier III and 1,074 under tier IV).

Exhaustions – 252 individuals exhausted their regular payments this week, a decrease of 28 from the previous week. There were 135 individuals that exhausted EUC08.

Temporary Disability Insurance

Temporary Disability Insurance – 610 initial claims and 8,077 continued claims were processed for Temporary Disability Insurance. The average weekly TDI payment is \$432 per week. Rhode Island is currently paying an average of 11.4 weeks per new claim.

	Initial Claims			Continued Claims	TOTAL - Initial and Continued Claims			
	Total	New	Additional		Current Week	Previous Week	Year Ago	Two Years Ago
Total - All programs*	1,737	956	781	19,819	21,556	20,140	24,387	33,574
UI Claims	1,191	627	564	12,392	13,583	12,857	14,023	17,255
Change from:								
Previous Week	256	65	191	470	726			
Year Ago	-73	12	-85	-367	-440			
Two Years Ago	-292	-330	38	-3,380	-3,672			
EUC08 Claims	431	303	128	6,169	6,600	6,230	9,326	14,068
Interstate-Liable	50	26	24	559	609	551	464	478
Workshare	65	0	65	699	764	502	574	1,773
Workshare Equivalency	13	0	13	165	178	121	170	298
UI Exhaustions	-	-	-	252	252	280	349	459
EUC08 Exhaustions	-	-	-	135	135	142	141	215
TDI Claims	610	511	99	8,077	8,687	7,191	8,626	9,004
Change from:								
Previous Week	65	48	17	1,431	1,496			
Year Ago	-298	-247	-51	359	61			

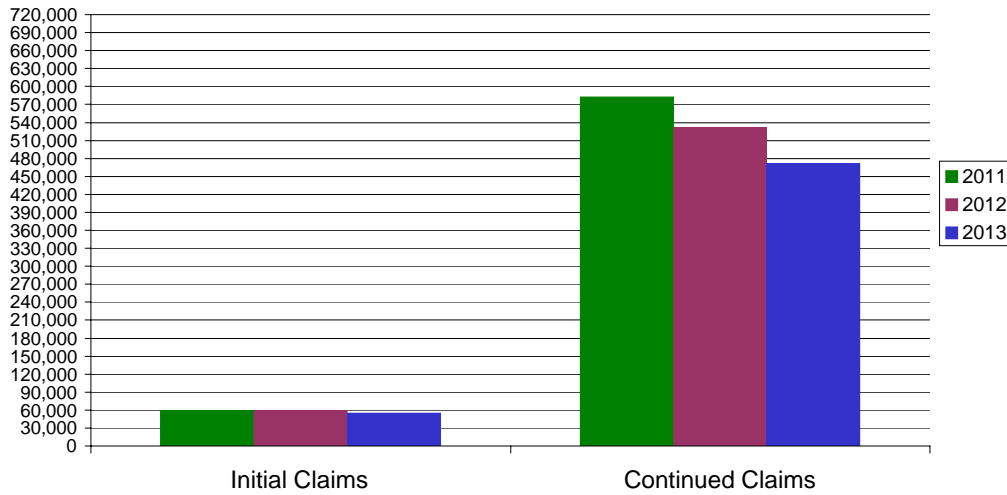
* Includes UI, EUC08, Workshare & Interstate Liable.

Equal Opportunity Employer / Program / Auxiliary aids and services available upon request to individuals with disabilities / TTY via RI Relay 711.

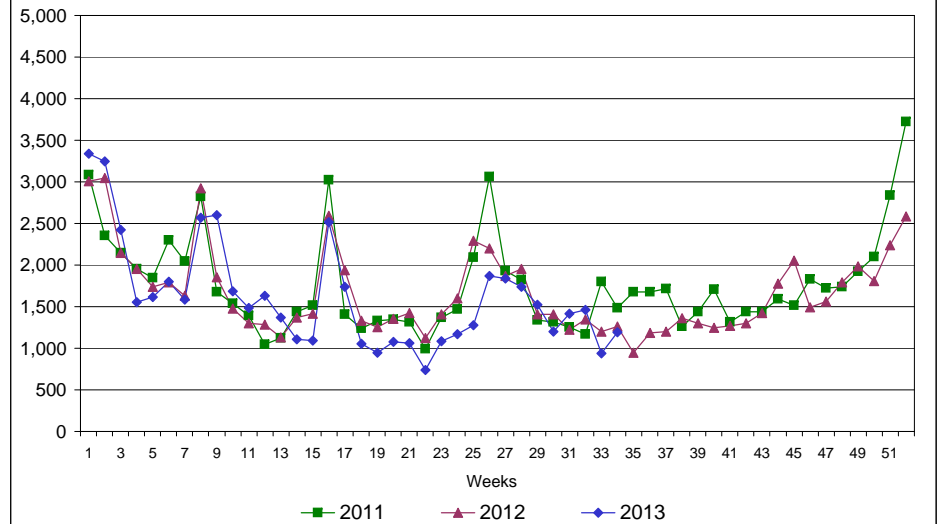
Rhode Island Department of Labor and Training

August 24, 2013

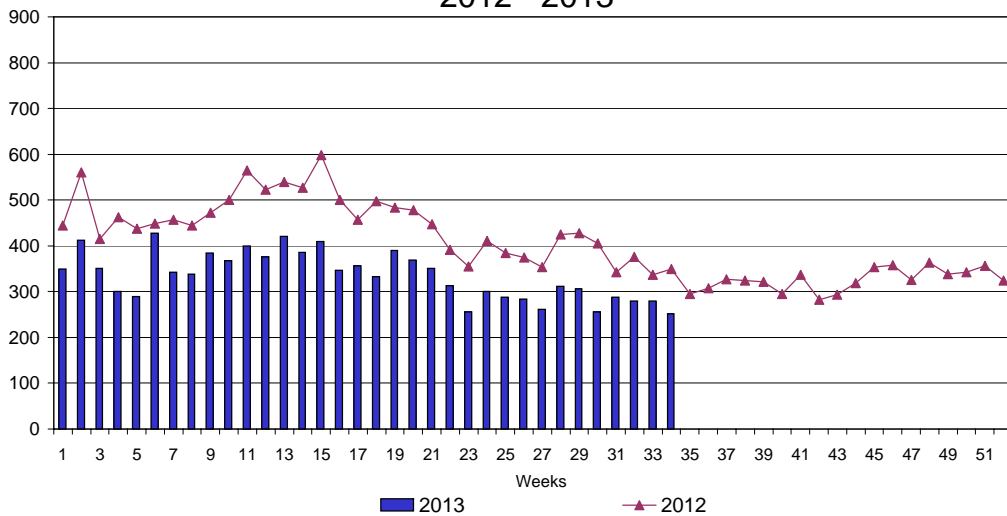
UI Claims Comparison Year to Date



UI Initial Claims 2011 - 2013



UI Exhaustions 2012 - 2013



TDI Claims Comparison Year to Date

