



## Rhode Island Department of Labor and Training

# *Weekly Update of Claims Activity*

*Week Ending: August 31, 2013*

### *Unemployment Insurance*

**Initial Claims** – 1,331 initial claims were processed during the week ending 8/31/13, an increase of 140 from the previous week, and an increase of 388 from a year ago. The number of initial claims filed to date is down 4.9 percent from last year and down 7.3 percent from two years ago

**Continued Claims** – 12,165 continued claims were processed during the week of 8/31/13, a decrease of 227 from the previous week and a decrease of 809 from a year ago. The number of continued claims filed to date is down 11.0 percent from last year and down 19.0 percent from two years ago.

**Workshare** – gives employers an alternative to layoffs by allowing employees to work reduced hours and collect a percentage of regular UI benefits to compensate for lost pay. This week, 65 initial claims and 1,059 continued claims were processed. An estimated 15 layoffs were prevented this week, as a result of Workshare.

**Emergency Unemployment Compensation 08** – EUC08, which became effective July 6, 2008, provides up to 53 weeks of federally funded benefits to eligible individuals who exhausted their UI claims. This week there were 305 new EUC08 claims processed and 5,946 continued claims processed (2,387 under tier I, 1,660 under tier II, 998 under tier III and 901 under tier IV).

**Exhaustions** – 254 individuals exhausted their regular payments this week, an increase of 2 from the previous week. There were 131 individuals that exhausted EUC08.

### *Temporary Disability Insurance*

**Temporary Disability Insurance** – 1,020 initial claims and 7,778 continued claims were processed for Temporary Disability Insurance. The average weekly TDI payment is \$441 per week. Rhode Island is currently paying an average of 11.3 weeks per new claim.

	<u>Initial Claims</u>			<u>Continued Claims</u>	<u>TOTAL - Initial and Continued Claims</u>			
	<u>Total</u>	<u>New</u>	<u>Additional</u>		<u>Current Week</u>	<u>Previous Week</u>	<u>Year Ago</u>	<u>Two Years Ago</u>
<b>Total - All programs*</b>	1,883	1,167	716	19,760	21,643	21,556	24,613	31,677
<b>UI Claims</b>	1,331	797	534	12,165	13,496	13,583	13,917	16,280
Change from:								
Previous Week	140	170	-30	-227	-87			
Year Ago	388	281	107	-809	-421			
Two Years Ago	-347	-219	-128	-2,437	-2,784			
<b>EUC08 Claims</b>	452	305	147	5,946	6,398	6,600	9,542	13,896
<b>Interstate-Liable</b>	35	25	10	590	625	609	478	498
<b>Workshare</b>	65	40	25	1,059	1,124	764	676	1,003
<b>Workshare Equivalency</b>	15	10	5	256	271	178	194	259
<b>UI Exhaustions</b>	-	-	-	254	254	252	295	372
<b>EUC08 Exhaustions</b>	-	-	-	131	131	135	132	209
<b>TDI Claims</b>	1,020	853	167	7,778	8,798	8,687	8,781	8,868
Change from:								
Previous Week	410	342	68	-299	111			
Year Ago	402	341	61	-385	17			

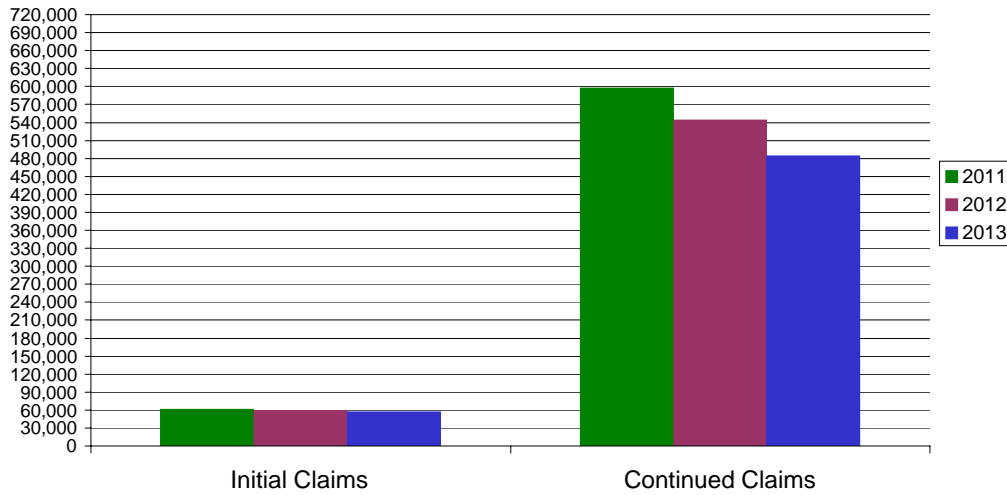
\* Includes UI, EUC08, Workshare & Interstate Liable.

Equal Opportunity Employer / Program / Auxiliary aids and services available upon request to individuals with disabilities / TTY via RI Relay 711.

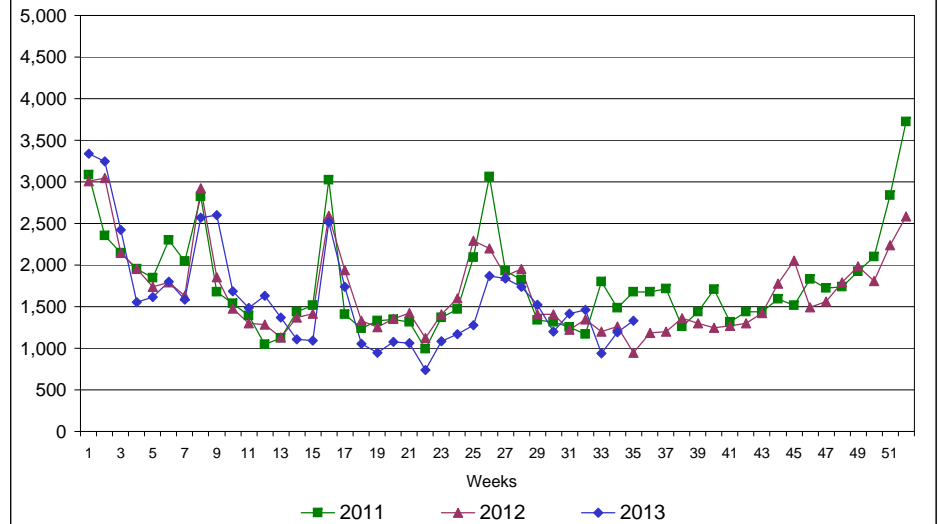
# Rhode Island Department of Labor and Training

## August 31, 2013

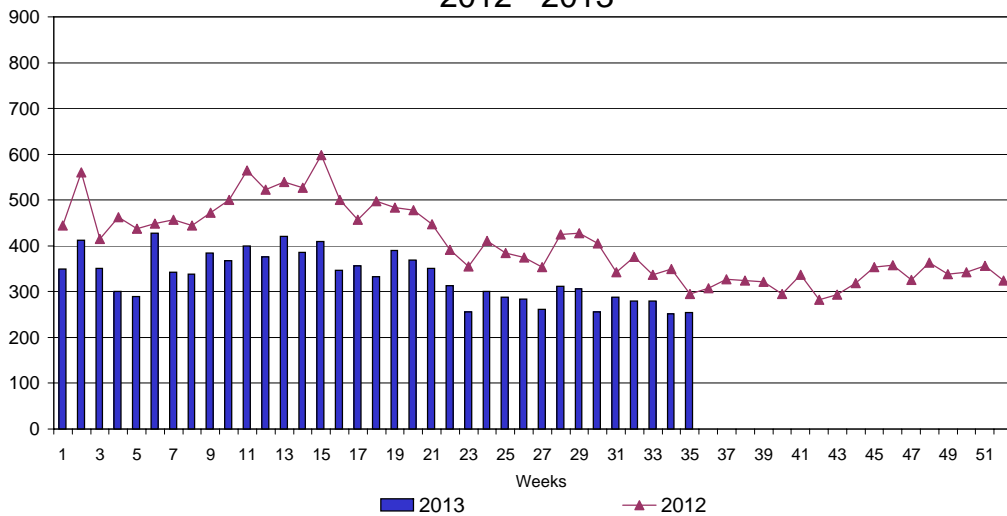
### UI Claims Comparison Year to Date



### UI Initial Claims 2011 - 2013



### UI Exhaustions 2012 - 2013



### TDI Claims Comparison Year to Date

