



Rhode Island Department of Labor and Training

Weekly Update of Claims Activity

Week Ending: September 7, 2013

Unemployment Insurance

Initial Claims – 1,084 initial claims were processed during the week ending 9/7/13, a decrease of 247 from the previous week, and a decrease of 101 from a year ago. The number of initial claims filed to date is down 5.0 percent from last year and down 8.1 percent from two years ago.

Continued Claims – 10,316 continued claims were processed during the week of 9/7/13, a decrease of 1,849 from the previous week and a decrease of 753 from a year ago. The number of continued claims filed to date is down 10.9 percent from last year and down 19.2 percent from two years ago.

Workshare – gives employers an alternative to layoffs by allowing employees to work reduced hours and collect a percentage of regular UI benefits to compensate for lost pay. This week, 28 initial claims and 678 continued claims were processed. An estimated 4 layoffs were prevented this week, as a result of Workshare.

Emergency Unemployment Compensation 08 – EUC08, which became effective July 6, 2008, provides up to 53 weeks of federally funded benefits to eligible individuals who exhausted their UI claims. This week there were 204 new EUC08 claims processed and 5,735 continued claims processed (2,438 under tier I, 1,628 under tier II, 911 under tier III and 758 under tier IV).

Exhaustions – 247 individuals exhausted their regular payments this week, a decrease of 7 from the previous week. There were 127 individuals that exhausted EUC08.

Temporary Disability Insurance

Temporary Disability Insurance – 501 initial claims and 6,715 continued claims were processed for Temporary Disability Insurance. The average weekly TDI payment is \$449 per week. Rhode Island is currently paying an average of 11.2 weeks per new claim.

	Initial Claims			Continued Claims	TOTAL - Initial and Continued Claims			
	Total	New	Additional		Current Week	Previous Week	Year Ago	Two Years Ago
Total - All programs*	1,472	923	549	17,310	18,782	21,643	22,432	31,226
UI Claims	1,084	663	421	10,316	11,400	13,496	12,254	15,755
Change from:								
Previous Week	-247	-134	-113	-1,849	-2,096			
Year Ago	-101	-171	70	-753	-854			
Two Years Ago	-595	-234	-361	-3,760	-4,355			
EUC08 Claims	320	204	116	5,735	6,055	6,398	9,010	13,753
Interstate-Liable	40	31	9	581	621	625	492	480
Workshare	28	25	3	678	706	1,124	676	1,238
Workshare Equivalency	4	3	1	157	161	271	195	324
UI Exhaustions	-	-	-	247	247	254	307	423
EUC08 Exhaustions	-	-	-	127	127	131	125	283
TDI Claims	501	405	96	6,715	7,216	8,798	7,232	7,633
Change from:								
Previous Week	-519	-448	-71	-1,063	-1,582			
Year Ago	120	101	19	-136	-16			

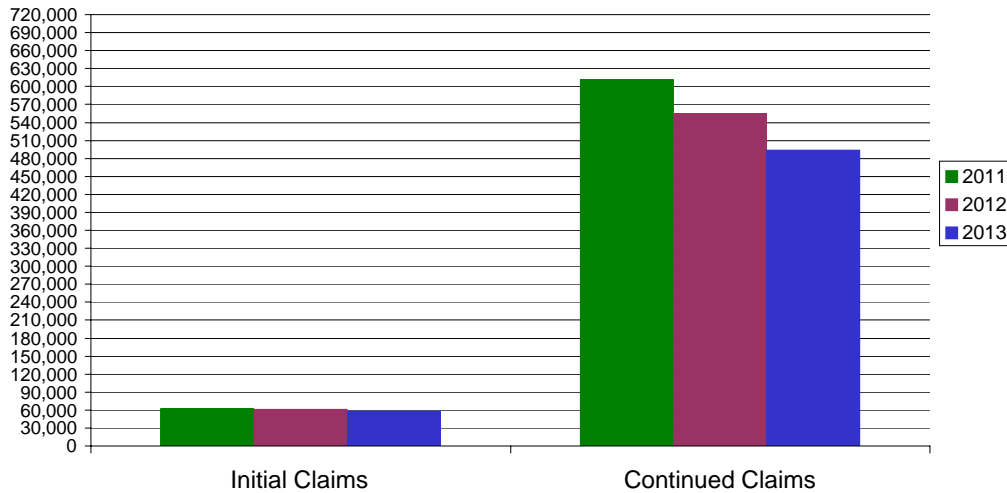
* Includes UI, EUC08, Workshare & Interstate Liable.

Equal Opportunity Employer / Program / Auxiliary aids and services available upon request to individuals with disabilities / TTY via RI Relay 711.

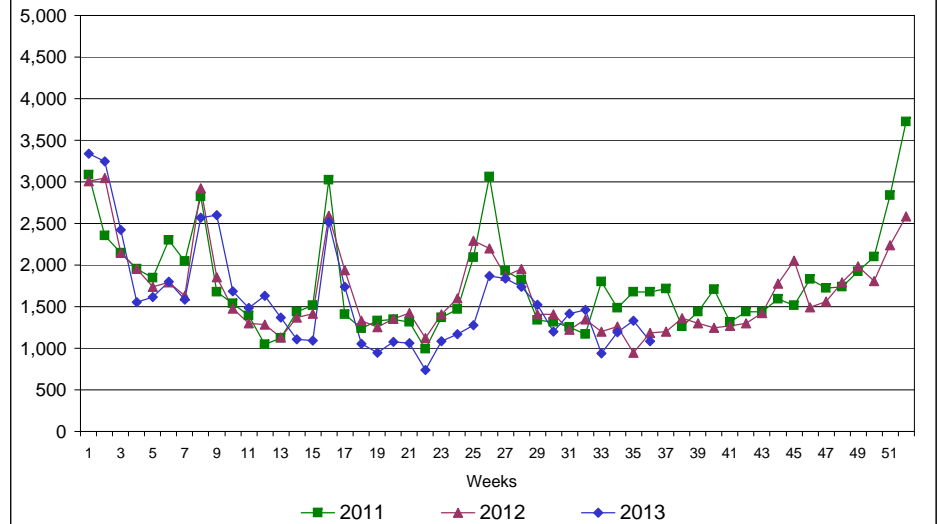
Rhode Island Department of Labor and Training

September 7, 2013

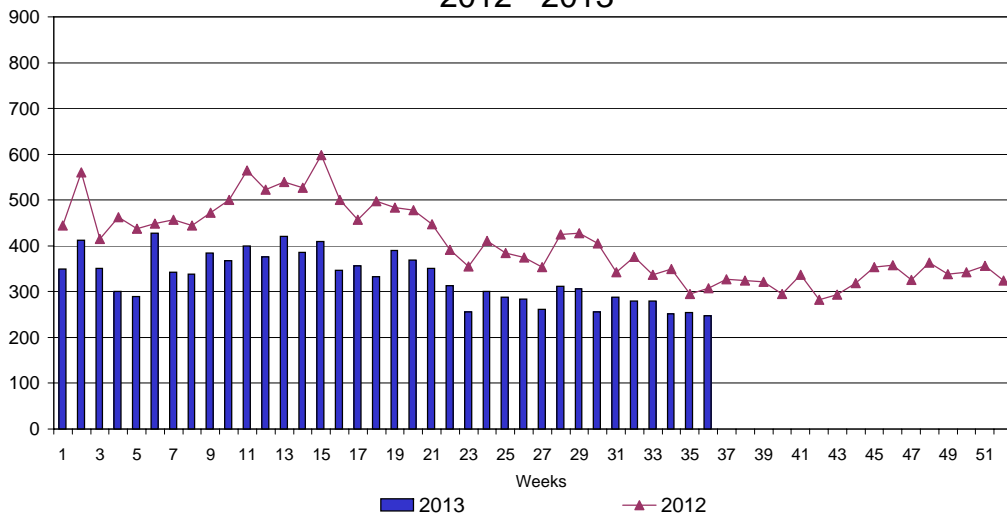
UI Claims Comparison Year to Date



UI Initial Claims 2011 - 2013



UI Exhaustions 2012 - 2013



TDI Claims Comparison Year to Date

