



Rhode Island Department of Labor and Training

Weekly Update of Claims Activity

Week Ending: September 14, 2013

Unemployment Insurance

Initial Claims – 1,111 initial claims were processed during the week ending 9/14/13, an increase of 27 from the previous week, and a decrease of 88 from a year ago. The number of initial claims filed to date is down 5.0 percent from last year and down 8.8 percent from two years ago

Continued Claims – 9,780 continued claims were processed during the week of 9/14/13, a decrease of 536 from the previous week and a decrease of 1,016 from a year ago. The number of continued claims filed to date is down 10.9 percent from last year and down 19.3 percent from two years ago.

Workshare – gives employers an alternative to layoffs by allowing employees to work reduced hours and collect a percentage of regular UI benefits to compensate for lost pay. This week, 32 initial claims and 718 continued claims were processed. An estimated 8 layoffs were prevented this week, as a result of Workshare.

Emergency Unemployment Compensation 08 – EUC08, which became effective July 6, 2008, provides up to 53 weeks of federally funded benefits to eligible individuals who exhausted their UI claims. This week there were 253 new EUC08 claims processed and 5,673 continued claims processed (2,428 under tier I, 1,670 under tier II, 953 under tier III and 622 under tier IV).

Exhaustions – 277 individuals exhausted their regular payments this week, an increase of 30 from the previous week. There were 116 individuals that exhausted EUC08.

Temporary Disability Insurance

Temporary Disability Insurance – 962 initial claims and 7,523 continued claims were processed for Temporary Disability Insurance. The average weekly TDI payment is \$443 per week. Rhode Island is currently paying an average of 11.2 weeks per new claim.

	Initial Claims			Continued Claims	TOTAL - Initial and Continued Claims			
	Total	New	Additional		Current Week	Previous Week	Year Ago	Two Years Ago
Total - All programs*	1,554	988	566	16,770	18,324	18,782	22,497	30,159
UI Claims	1,111	693	418	9,780	10,891	11,400	11,995	14,412
Change from:								
Previous Week	27	30	-3	-536	-509			
Year Ago	-88	129	-217	-1,016	-1,104			
Two Years Ago	-602	-417	-185	-2,919	-3,521			
EUC08 Claims	374	253	121	5,673	6,047	6,055	9,537	13,924
Interstate-Liable	37	19	18	599	636	621	465	493
Workshare	32	23	9	718	750	706	500	1,330
Workshare Equivalency	8	5	3	165	173	161	186	384
UI Exhaustions	-	-	-	277	277	247	327	394
EUC08 Exhaustions	-	-	-	116	116	127	133	245
TDI Claims	962	806	156	7,523	8,485	7,216	9,264	8,275
Change from:								
Previous Week	461	401	60	808	1,269			
Year Ago	-117	-99	-18	-662	-779			

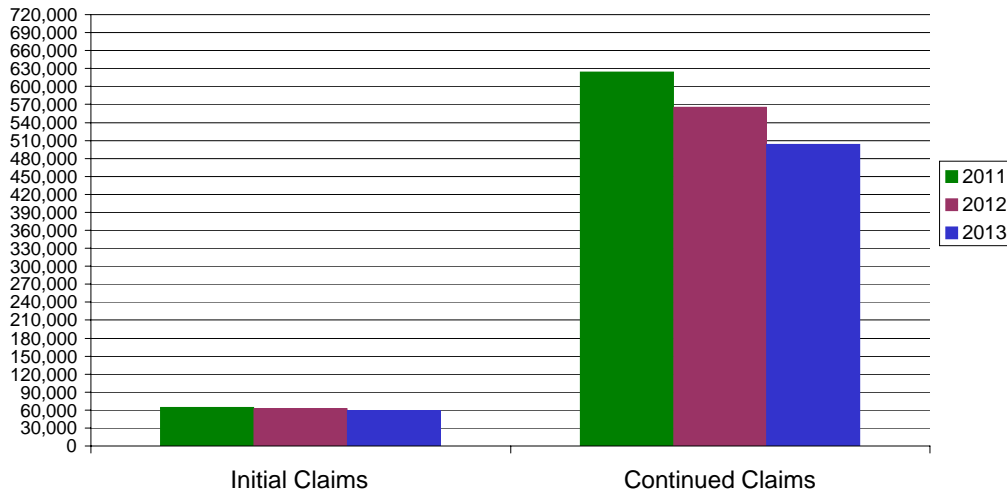
* Includes UI, EUC08, Workshare & Interstate Liable.

Equal Opportunity Employer / Program / Auxiliary aids and services available upon request to individuals with disabilities / TTY via RI Relay 711.

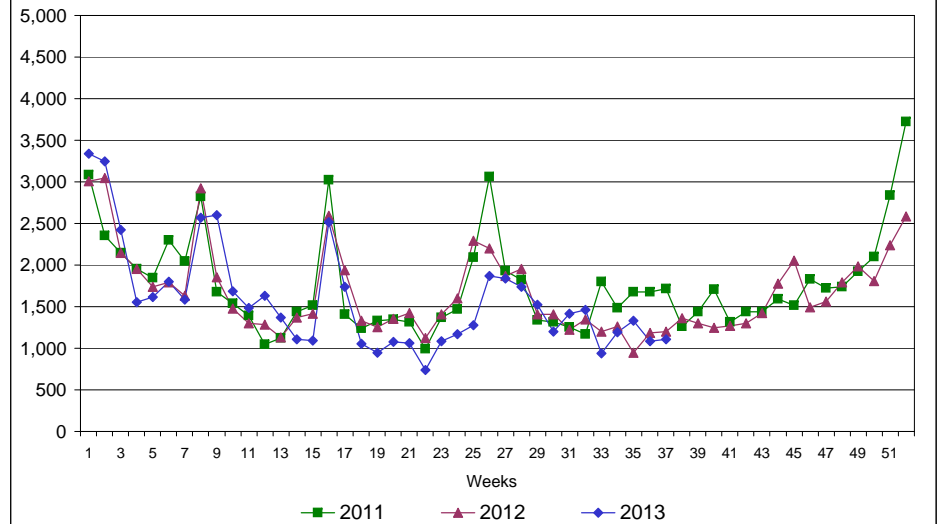
Rhode Island Department of Labor and Training

September 14, 2013

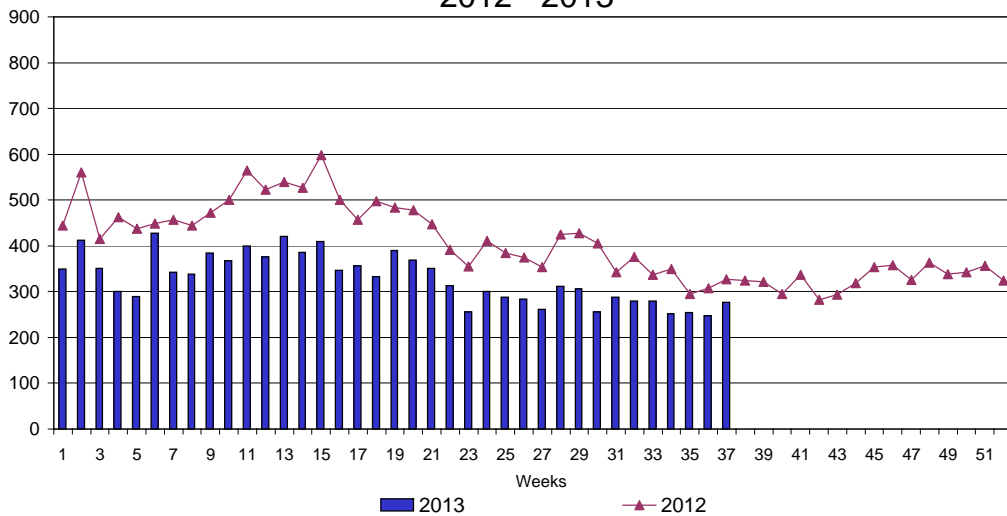
UI Claims Comparison Year to Date



UI Initial Claims 2011 - 2013



UI Exhaustions 2012 - 2013



TDI Claims Comparison Year to Date

