



Rhode Island Department of Labor and Training

Weekly Update of Claims Activity

Week Ending: September 21, 2013

Unemployment Insurance

Initial Claims – 1,080 initial claims were processed during the week ending 9/21/13, a decrease of 31 from the previous week, and a decrease of 284 from a year ago. The number of initial claims filed to date is down 5.4 percent from last year and down 8.9 percent from two years ago

Continued Claims – 9,442 continued claims were processed during the week of 9/21/13, a decrease of 338 from the previous week and a decrease of 1,157 from a year ago. The number of continued claims filed to date is down 10.9 percent from last year and down 19.3 percent from two years ago.

Workshare – gives employers an alternative to layoffs by allowing employees to work reduced hours and collect a percentage of regular UI benefits to compensate for lost pay. This week, 33 initial claims and 562 continued claims were processed. An estimated 6 layoffs were prevented this week, as a result of Workshare.

Emergency Unemployment Compensation 08 – EUC08, which became effective July 6, 2008, provides up to 53 weeks of federally funded benefits to eligible individuals who exhausted their UI claims. This week there were 224 new EUC08 claims processed and 5,384 continued claims processed (2,409 under tier I, 1,609 under tier II, 892 under tier III and 474 under tier IV).

Exhaustions – 230 individuals exhausted their regular payments this week, a decrease of 47 from the previous week. There were 87 individuals that exhausted EUC08.

Temporary Disability Insurance

Temporary Disability Insurance – 966 initial claims and 7,583 continued claims were processed for Temporary Disability Insurance. The average weekly TDI payment is \$441 per week. Rhode Island is currently paying an average of 11.2 weeks per new claim.

	Initial Claims			Continued Claims	TOTAL - Initial and Continued Claims			
	Total	New	Additional		Current Week	Previous Week	Year Ago	Two Years Ago
Total - All programs*	1,497	968	529	15,993	17,490	18,324	22,349	28,335
UI Claims	1,080	711	369	9,442	10,522	10,891	11,963	13,160
Change from:								
Previous Week	-31	18	-49	-338	-369			
Year Ago	-284	-230	-54	-1,157	-1,441			
Two Years Ago	-180	-70	-110	-2,458	-2,638			
EUC08 Claims	343	224	119	5,384	5,727	6,047	9,180	13,752
Interstate-Liable	41	21	20	605	646	636	458	503
Workshare	33	12	21	562	595	750	748	920
Workshare Equivalency	6	2	4	126	132	173	201	250
UI Exhaustions	-	-	-	230	230	277	324	412
EUC08 Exhaustions	-	-	-	87	87	116	132	234
TDI Claims	966	811	155	7,583	8,549	8,485	8,450	8,643
Change from:								
Previous Week	4	5	-1	60	64			
Year Ago	-65	-34	-31	164	99			

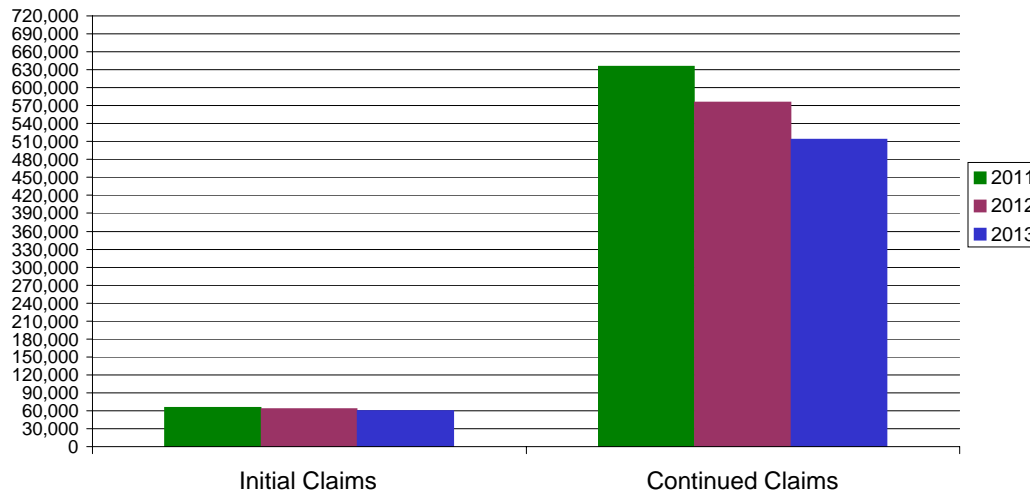
* Includes UI, EUC08, Workshare & Interstate Liable.

Equal Opportunity Employer / Program / Auxiliary aids and services available upon request to individuals with disabilities / TTY via RI Relay 711.

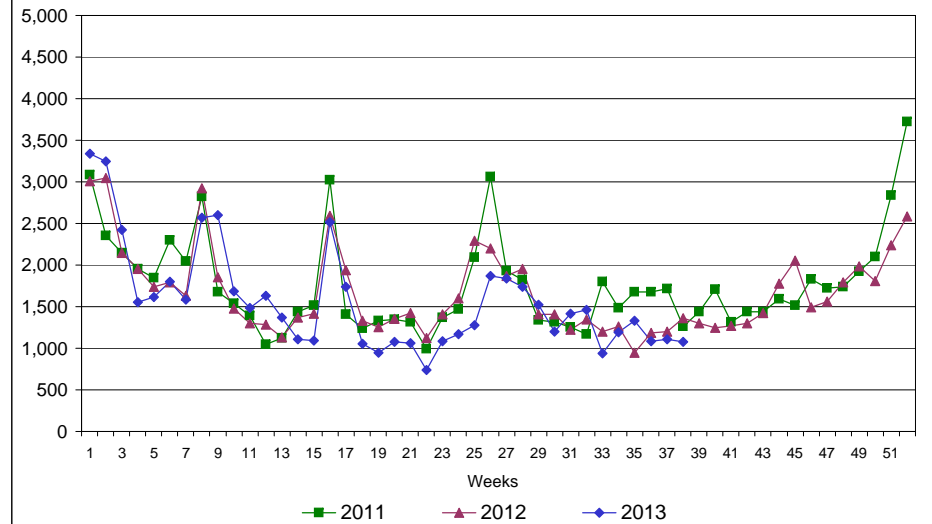
Rhode Island Department of Labor and Training

September 21, 2013

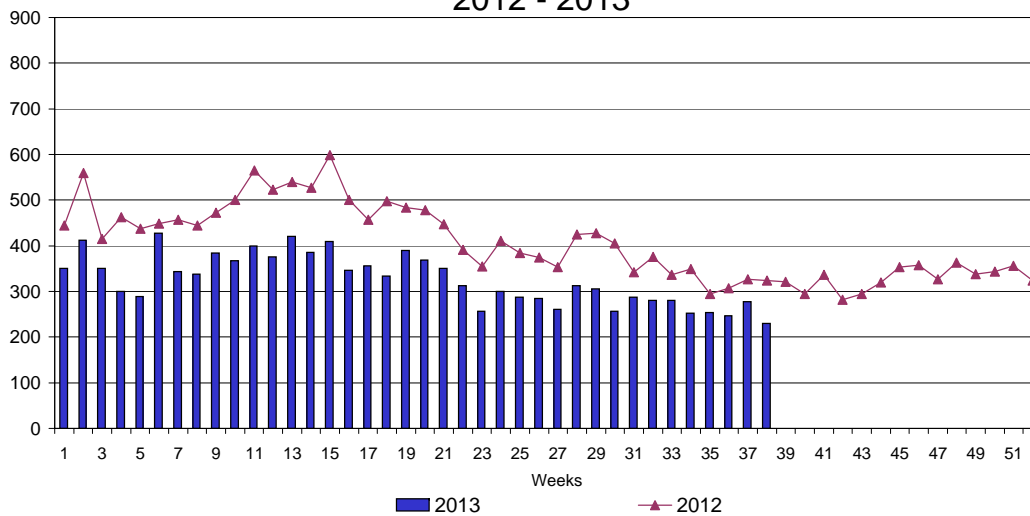
UI Claims Comparison Year to Date



UI Initial Claims 2011 - 2013



UI Exhaustions 2012 - 2013



TDI Claims Comparison Year to Date

