



Rhode Island Department of Labor and Training

Weekly Update of Claims Activity

Week Ending: September 28, 2013

Unemployment Insurance

Initial Claims – 1,036 initial claims were processed during the week ending 9/28/13, a decrease of 44 from the previous week, and a decrease of 263 from a year ago. The number of initial claims filed to date is down 5.7 percent from last year and down 9.3 percent from two years ago.

Continued Claims – 9,124 continued claims were processed during the week of 9/28/13, a decrease of 318 from the previous week and a decrease of 1,260 from a year ago. The number of continued claims filed to date is down 10.9 percent from last year and down 19.4 percent from two years ago.

Workshare – gives employers an alternative to layoffs by allowing employees to work reduced hours and collect a percentage of regular UI benefits to compensate for lost pay. This week, 6 initial claims and 450 continued claims were processed. An estimated 1 layoff was prevented this week, as a result of Workshare.

Emergency Unemployment Compensation 08 – EUC08, which became effective July 6, 2008, provides up to 53 weeks of federally funded benefits to eligible individuals who exhausted their UI claims. This week there were 249 new EUC08 claims processed and 5,284 continued claims processed (2,410 under tier I, 1,572 under tier II, 916 under tier III and 386 under tier IV).

Exhaustions – 224 individuals exhausted their regular payments this week, a decrease of 6 from the previous week. There were 92 individuals that exhausted EUC08.

Temporary Disability Insurance

Temporary Disability Insurance – 721 initial claims and 6,910 continued claims were processed for Temporary Disability Insurance. The average weekly TDI payment is \$437 per week. Rhode Island is currently paying an average of 11.2 weeks per new claim.

	Initial Claims			Continued Claims	TOTAL - Initial and Continued Claims			
	Total	New	Additional		Current Week	Previous Week	Year Ago	Two Years Ago
Total - All programs*	1,453	970	483	15,434	16,887	17,490	22,228	28,575
UI Claims	1,036	693	343	9,124	10,160	10,522	11,683	13,286
Change from:								
Previous Week	-44	-18	-26	-318	-362			
Year Ago	-263	-102	-161	-1,260	-1,523			
Two Years Ago	-399	-216	-183	-2,727	-3,126			
EUC08 Claims	373	249	124	5,284	5,657	5,727	9,285	13,735
Interstate-Liable	38	24	14	576	614	646	450	532
Workshare	6	4	2	450	456	595	810	1,022
Workshare Equivalency	1	1	0	112	113	132	223	272
UI Exhaustions	-	-	-	224	224	230	321	371
EUC08 Exhaustions	-	-	-	92	92	87	123	241
TDI Claims	721	593	128	6,910	7,631	8,549	7,435	7,795
Change from:								
Previous Week	-245	-218	-27	-673	-918			
Year Ago	212	179	33	-16	196			

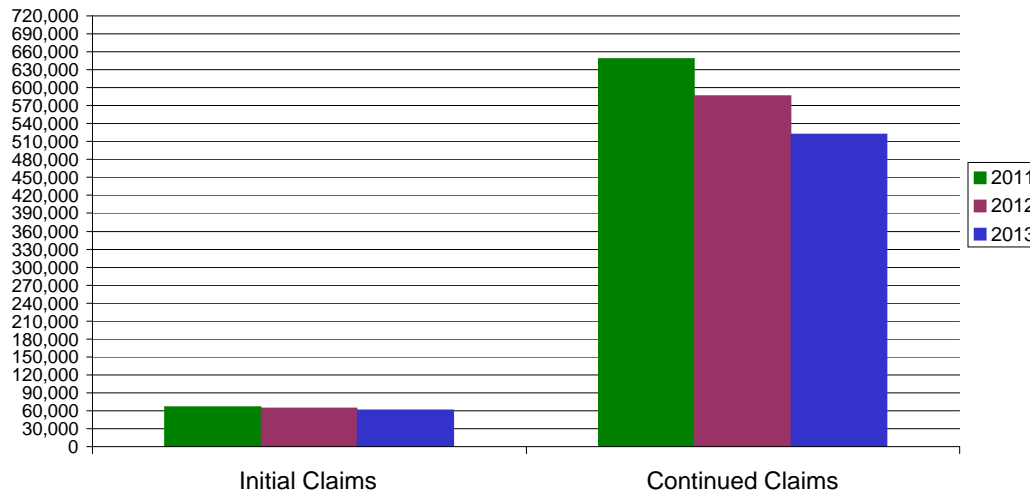
* Includes UI, EUC08, Workshare & Interstate Liable.

Equal Opportunity Employer / Program / Auxiliary aids and services available upon request to individuals with disabilities / TTY via RI Relay 711.

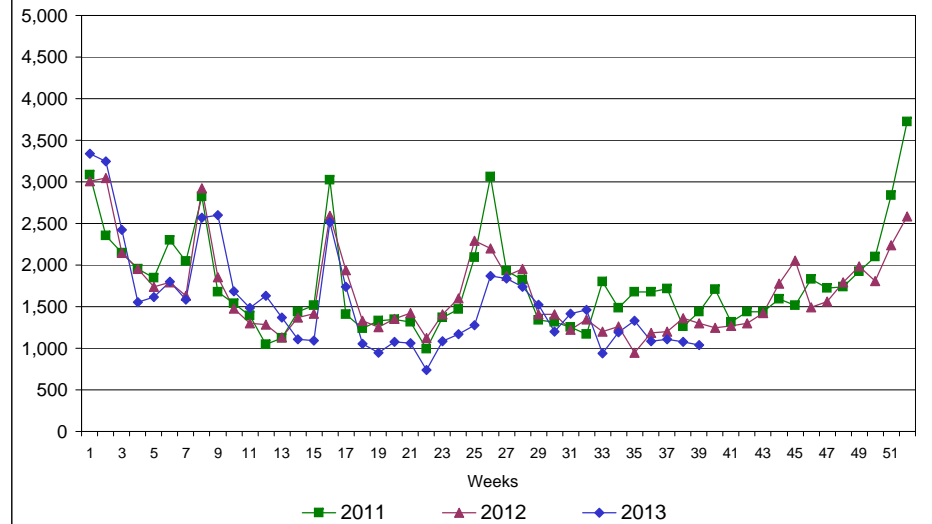
Rhode Island Department of Labor and Training

September 28, 2013

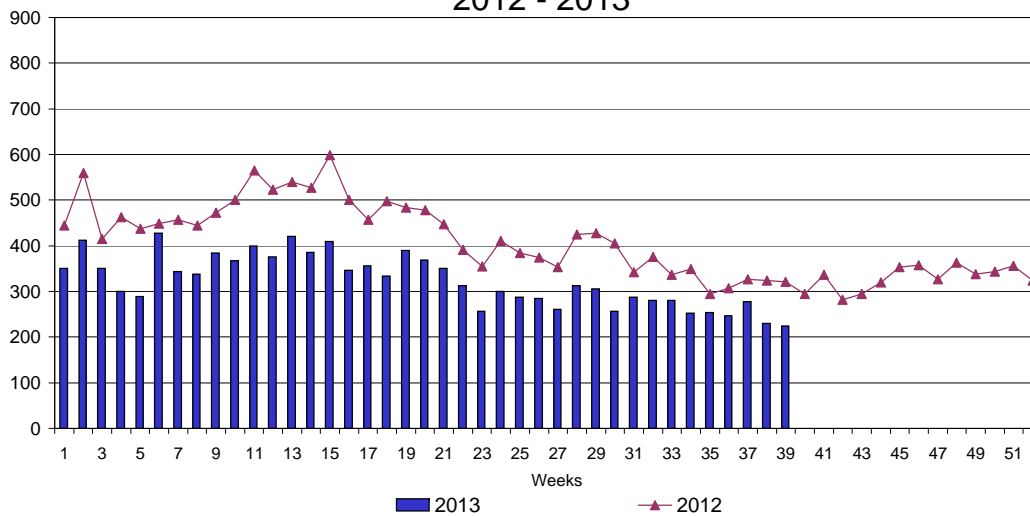
UI Claims Comparison Year to Date



UI Initial Claims 2011 - 2013



UI Exhaustions 2012 - 2013



TDI Claims Comparison Year to Date

