



Rhode Island Department of Labor and Training

Weekly Update of Claims Activity

Week Ending: November 2, 2013

Unemployment Insurance

Initial Claims – 1,121 initial claims were processed during the week ending 11/2/13, a decrease of 25 from the previous week, and a decrease of 654 from a year ago. The number of initial claims filed to date is down 6.7 percent from last year and down 10.5 percent from two years ago.

Continued Claims – 9,228 continued claims were processed during the week of 11/2/13, an increase of 75 from the previous week and a decrease of 1,018 from a year ago. The number of continued claims filed to date is down 11.1 percent from last year and down 19.8 percent from two years ago.

Workshare – gives employers an alternative to layoffs by allowing employees to work reduced hours and collect a percentage of regular UI benefits to compensate for lost pay. This week, 66 initial claims and 1,091 continued claims were processed. An estimated 15 layoffs were prevented this week, as a result of Workshare.

Emergency Unemployment Compensation 08 – EUC08, which became effective July 6, 2008, provides up to 53 weeks of federally funded benefits to eligible individuals who exhausted their UI claims. This week there were 252 new EUC08 claims processed and 4,745 continued claims processed (2,267 under tier I, 1,542 under tier II, 868 under tier III and 68 under tier IV).

Exhaustions – 220 individuals exhausted their regular payments this week, a decrease of 21 from the previous week. There were 16 individuals that exhausted EUC08.

Temporary Disability Insurance

Temporary Disability Insurance – 844 initial claims and 5,425 continued claims were processed for Temporary Disability Insurance. The average weekly TDI payment is \$443 per week. Rhode Island is currently paying an average of 11.2 weeks per new claim.

	Initial Claims			Continued Claims	TOTAL - Initial and Continued Claims			
	Total	New	Additional		Current Week	Previous Week	Year Ago	Two Years Ago
Total - All programs*	1,597	996	601	15,648	17,245	16,645	21,884	29,457
UI Claims	1,121	697	424	9,228	10,349	10,299	12,021	14,322
Change from:								
Previous Week	-25	3	-28	75	50			
Year Ago	-654	-270	-384	-1,018	-1,672			
Two Years Ago	-472	-266	-206	-3,501	-3,973			
EUC08 Claims	374	252	122	4,745	5,119	5,168	8,868	13,585
Interstate-Liable	36	24	12	584	620	653	455	561
Workshare	66	23	43	1,091	1,157	525	540	989
Workshare Equivalency	15	7	8	260	275	124	137	244
UI Exhaustions	-	-	-	220	220	241	319	351
EUC08 Exhaustions	-	-	-	16	16	58	51	261
TDI Claims	844	694	150	5,425	6,269	8,055	5,994	7,829
Change from:								
Previous Week	2	-21	23	-1,788	-1,786			
Year Ago	130	93	37	145	275			

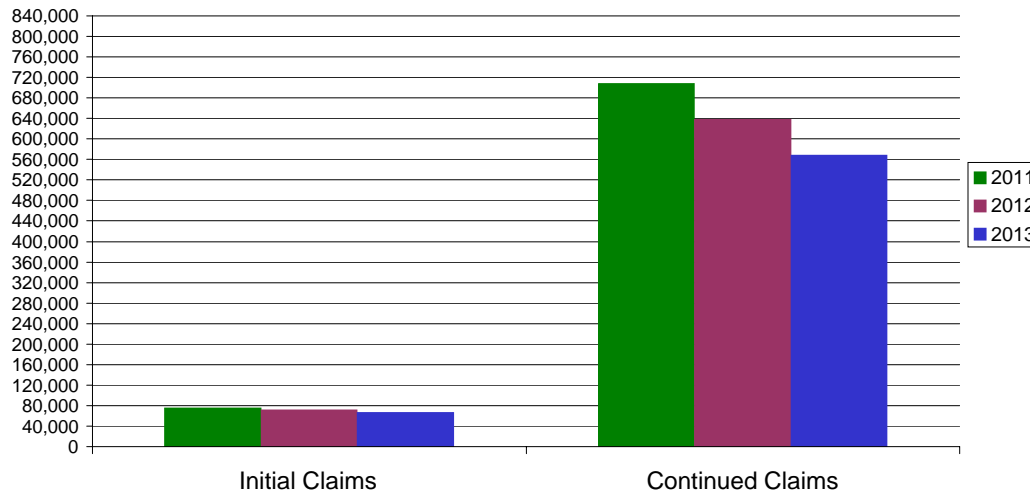
* Includes UI, EUC08, Workshare & Interstate Liable.

Equal Opportunity Employer / Program / Auxiliary aids and services available upon request to individuals with disabilities / TTY via RI Relay 711.

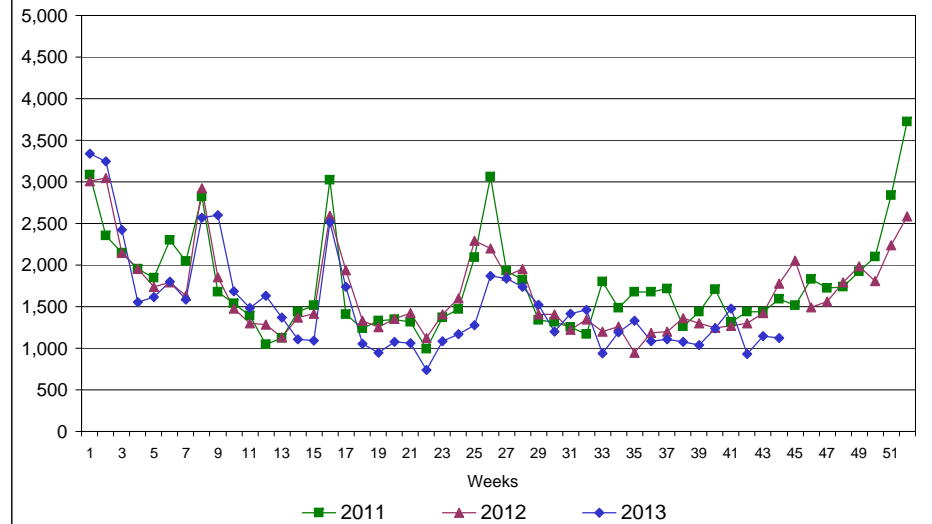
Rhode Island Department of Labor and Training

November 2, 2013

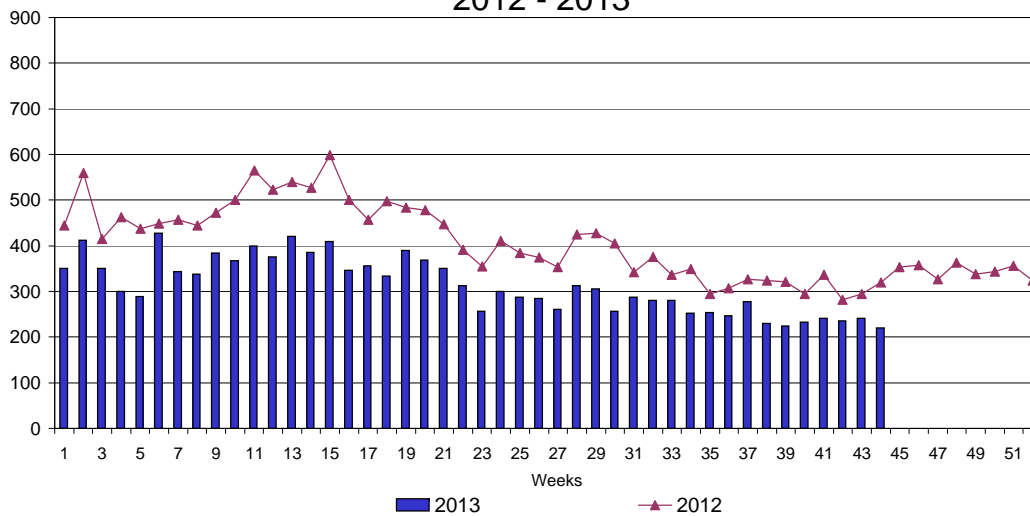
UI Claims Comparison Year to Date



UI Initial Claims 2011 - 2013



UI Exhaustions 2012 - 2013



TDI Claims Comparison Year to Date

