



Rhode Island Department of Labor and Training

Weekly Update of Claims Activity

Week Ending: November 9, 2013

Unemployment Insurance

Initial Claims – 1,397 initial claims were processed during the week ending 11/9/13, an increase of 276 from the previous week, and a decrease of 658 from a year ago. The number of initial claims filed to date is down 7.4 percent from last year and down 10.4 percent from two years ago.

Continued Claims – 9,509 continued claims were processed during the week of 11/9/13, an increase of 281 from the previous week and a decrease of 1,268 from a year ago. The number of continued claims filed to date is down 11.1 percent from last year and down 19.9 percent from two years ago.

Workshare – gives employers an alternative to layoffs by allowing employees to work reduced hours and collect a percentage of regular UI benefits to compensate for lost pay. This week, 22 initial claims and 400 continued claims were processed. An estimated 5 layoffs were prevented this week, as a result of Workshare.

Emergency Unemployment Compensation 08 – EUC08, which became effective July 6, 2008, provides up to 53 weeks of federally funded benefits to eligible individuals who exhausted their UI claims. This week there were 237 new EUC08 claims processed and 4,751 continued claims processed (2,271 under tier I, 1,560 under tier II, 861 under tier III and 59 under tier IV).

Exhaustions – 241 individuals exhausted their regular payments this week, an increase of 21 from the previous week. There were 9 individuals that exhausted EUC08.

Temporary Disability Insurance

Temporary Disability Insurance – 789 initial claims and 5,498 continued claims were processed for Temporary Disability Insurance. The average weekly TDI payment is \$441 per week. Rhode Island is currently paying an average of 11.2 weeks per new claim.

	Initial Claims			Continued Claims	TOTAL - Initial and Continued Claims			
	Total	New	Additional		Current Week	Previous Week	Year Ago	Two Years Ago
Total - All programs*	1,850	1,138	712	15,296	17,146	17,245	22,980	29,033
UI Claims	1,397	867	530	9,509	10,906	10,349	12,832	14,100
Change from:								
Previous Week	276	170	106	281	557			
Year Ago	-658	-367	-291	-1,268	-1,926			
Two Years Ago	-116	-125	9	-3,078	-3,194			
EUC08 Claims	398	237	161	4,751	5,149	5,119	9,129	13,225
Interstate-Liable	33	20	13	636	669	620	507	574
Workshare	22	14	8	400	422	1,157	512	1,134
Workshare Equivalency	5	3	2	98	103	275	160	283
UI Exhaustions	-	-	-	241	241	220	353	367
EUC08 Exhaustions	-	-	-	9	9	16	94	201
TDI Claims	789	670	119	5,498	6,287	6,269	9,305	7,819
Change from:								
Previous Week	-55	-24	-31	73	18			
Year Ago	-122	-81	-41	-2,896	-3,018			

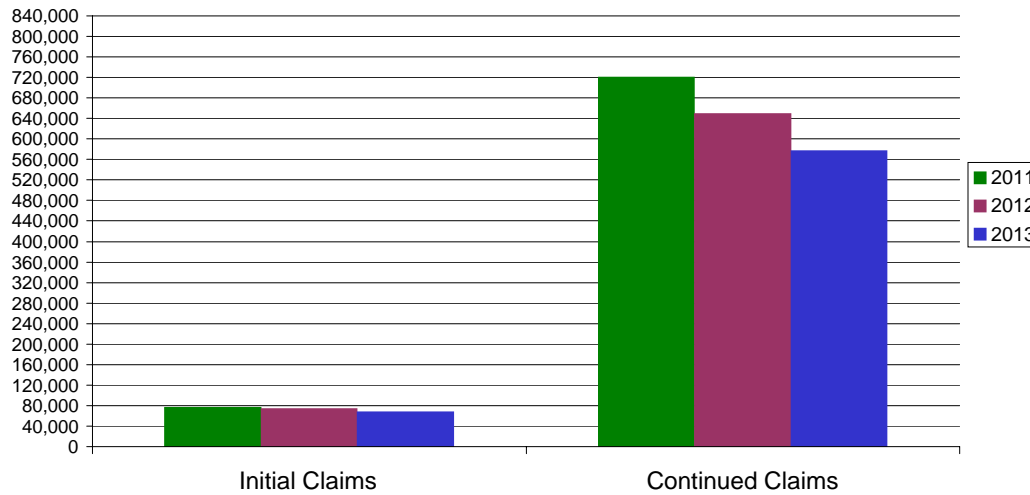
* Includes UI, EUC08, Workshare & Interstate Liable.

Equal Opportunity Employer / Program / Auxiliary aids and services available upon request to individuals with disabilities / TTY via RI Relay 711.

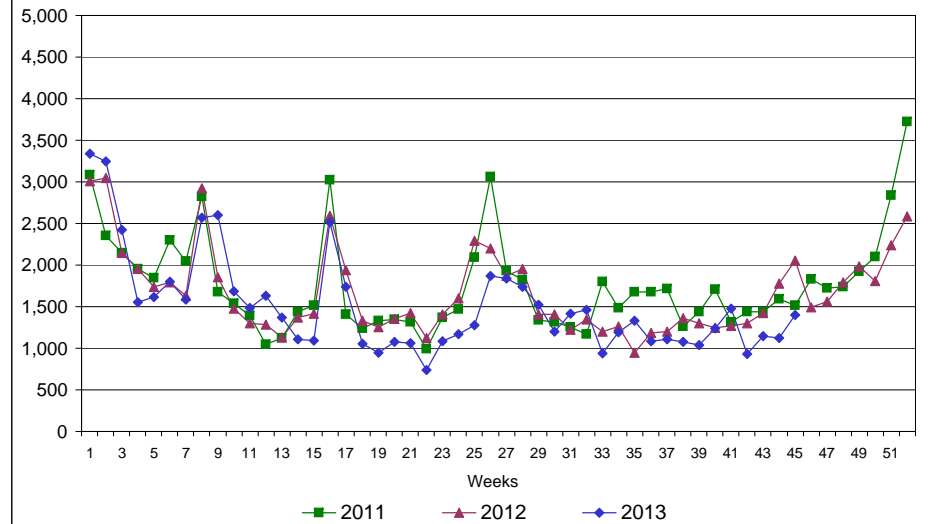
Rhode Island Department of Labor and Training

November 9, 2013

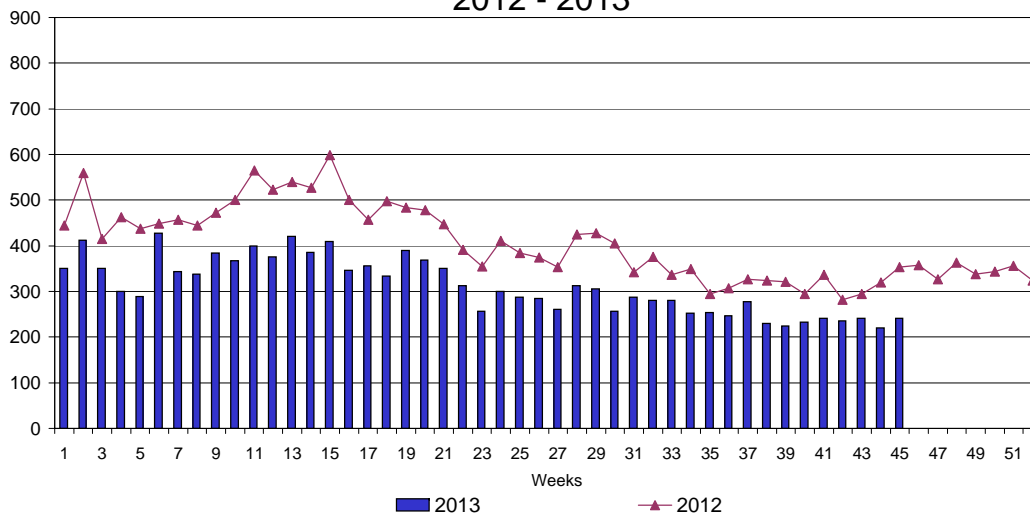
UI Claims Comparison Year to Date



UI Initial Claims 2011 - 2013



UI Exhaustions 2012 - 2013



TDI Claims Comparison Year to Date

