



## Rhode Island Department of Labor and Training

# *Weekly Update of Claims Activity*

*Week Ending: December 7, 2013*

### *Unemployment Insurance*

**Initial Claims** – 1,461 initial claims were processed during the week ending 12/7/13, a decrease of 81 from the previous week, and a decrease of 522 from a year ago. The number of initial claims filed to date is down 9.5 percent from last year and down 12.7 percent from two years ago.

**Continued Claims** – 11,414 continued claims were processed during the week of 12/7/13, an increase of 945 from the previous week and a decrease of 1,008 from a year ago. The number of continued claims filed to date is down 11.5 percent from last year and down 20.5 percent from two years ago.

**Workshare** – gives employers an alternative to layoffs by allowing employees to work reduced hours and collect a percentage of regular UI benefits to compensate for lost pay. This week, 17 initial claims and 298 continued claims were processed. An estimated 6 layoffs were prevented this week, as a result of Workshare.

**Emergency Unemployment Compensation 08** – EUC08, which became effective July 6, 2008, provides up to 53 weeks of federally funded benefits to eligible individuals who exhausted their UI claims. This week there were 264 new EUC08 claims processed and 4,838 continued claims processed (2,252 under tier I, 1,668 under tier II, 885 under tier III and 33 under tier IV).

**Exhaustions** – 266 individuals exhausted their regular payments this week, an increase of 26 from the previous week. There were 3 individuals that exhausted EUC08.

### *Temporary Disability Insurance*

**Temporary Disability Insurance** – 524 initial claims and 6,084 continued claims were processed for Temporary Disability Insurance. The average weekly TDI payment is \$450 per week. Rhode Island is currently paying an average of 11.2 weeks per new claim.

	Initial Claims			Continued Claims	TOTAL - Initial and Continued Claims			
	Total	New	Additional		Current Week	Previous Week	Year Ago	Two Years Ago
<b>Total - All programs*</b>	1,923	1,096	827	17,174	19,097	18,507	24,746	30,854
<b>UI Claims</b>	1,461	797	664	11,414	12,875	12,011	14,405	16,039
Change from:								
Previous Week	-81	-42	-39	945	864			
Year Ago	-522	-851	329	-1,008	-1,530			
Two Years Ago	-460	-310	-150	-2,704	-3,164			
<b>EUC08 Claims</b>	412	264	148	4,838	5,250	5,220	9,319	13,433
<b>Interstate-Liable</b>	33	19	14	624	657	659	585	614
<b>Workshare</b>	17	16	1	298	315	617	437	768
<b>Workshare Equivalency</b>	6	6	0	75	81	154	175	183
<b>UI Exhaustions</b>	-	-	-	266	266	240	338	396
<b>EUC08 Exhaustions</b>	-	-	-	3	3	12	125	230
<b>TDI Claims</b>	524	442	82	6,084	6,608	7,562	7,548	7,897
Change from:								
Previous Week	-177	-130	-47	-777	-954			
Year Ago	-390	-309	-81	-550	-940			

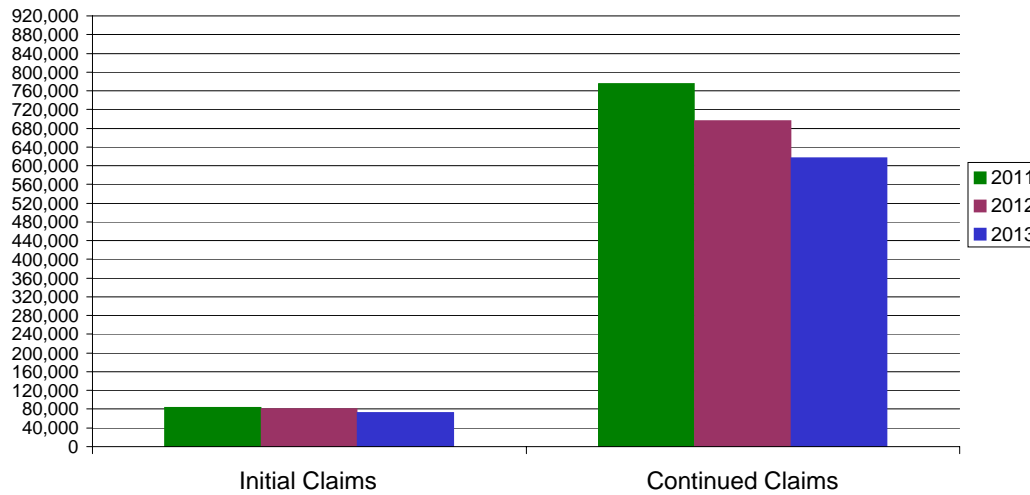
\* Includes UI, EUC08, Workshare & Interstate Liable.

Equal Opportunity Employer / Program / Auxiliary aids and services available upon request to individuals with disabilities / TTY via RI Relay 711.

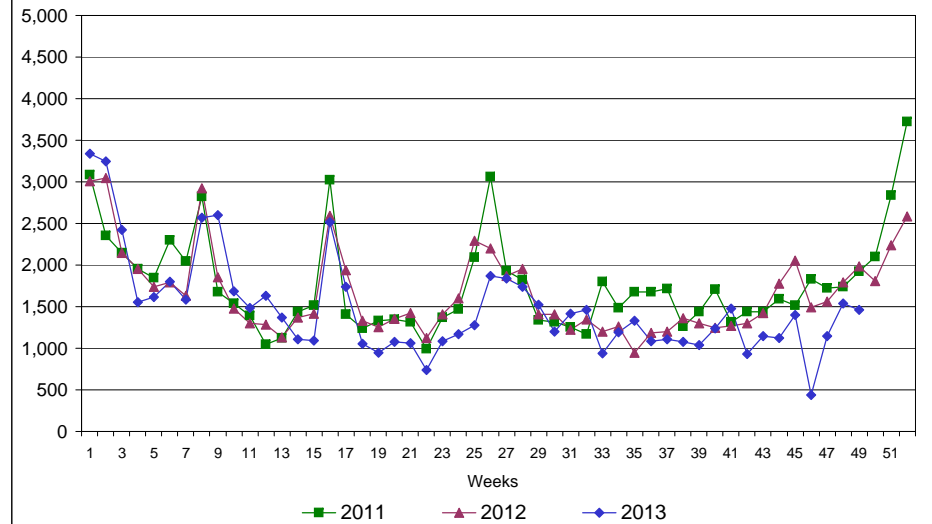
# Rhode Island Department of Labor and Training

## December 7, 2013

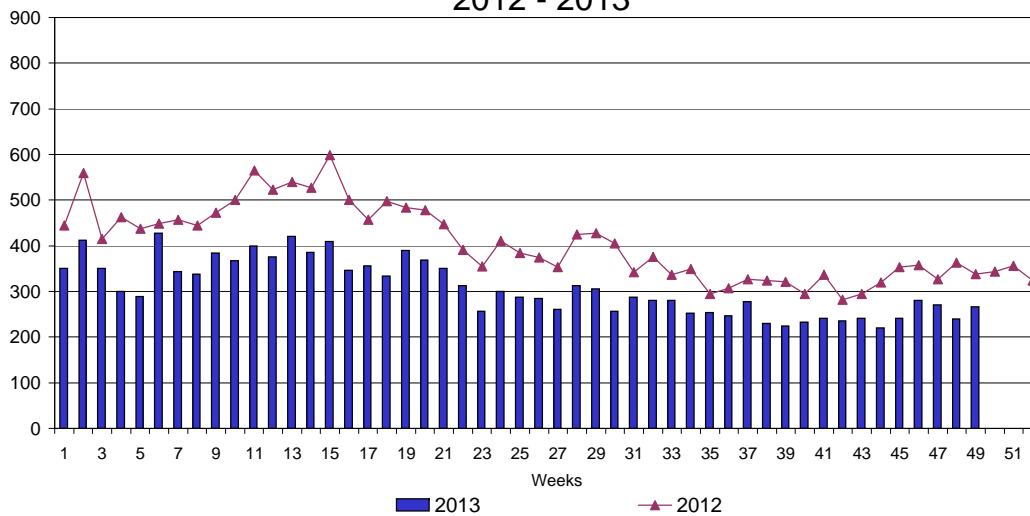
### UI Claims Comparison Year to Date



### UI Initial Claims 2011 - 2013



### UI Exhaustions 2012 - 2013



### TDI Claims Comparison Year to Date

