



Rhode Island Department of Labor and Training

Weekly Update of Claims Activity

Week Ending: December 14, 2013

Unemployment Insurance

Initial Claims – 1,530 initial claims were processed during the week ending 12/14/13, an increase of 69 from the previous week, and a decrease of 281 from a year ago. The number of initial claims filed to date is down 9.7 percent from last year and down 13.0 percent from two years ago.

Continued Claims – 11,163 continued claims were processed during the week of 12/14/13, a decrease of 251 from the previous week and a decrease of 1,792 from a year ago. The number of continued claims filed to date is down 11.5 percent from last year and down 20.5 percent from two years ago.

Workshare – gives employers an alternative to layoffs by allowing employees to work reduced hours and collect a percentage of regular UI benefits to compensate for lost pay. This week, 2 initial claims and 457 continued claims were processed. There were not any layoffs prevented this week, as a result of Workshare.

Emergency Unemployment Compensation 08 – EUC08, which became effective July 6, 2008, provides up to 53 weeks of federally funded benefits to eligible individuals who exhausted their UI claims. This week there were 219 new EUC08 claims processed and 4,696 continued claims processed (2,189 under tier I, 1,600 under tier II, 873 under tier III and 34 under tier IV).

Exhaustions – 284 individuals exhausted their regular payments this week, an increase of 18 from the previous week. There were 5 individuals that exhausted EUC08.

Temporary Disability Insurance

Temporary Disability Insurance – 940 initial claims and 7,183 continued claims were processed for Temporary Disability Insurance. The average weekly TDI payment is \$441 per week. Rhode Island is currently paying an average of 11.2 weeks per new claim.

	Initial Claims			Continued Claims	TOTAL - Initial and Continued Claims			
	Total	New	Additional		Current Week	Previous Week	Year Ago	Two Years Ago
Total - All programs*	1,967	1,055	912	16,967	18,934	19,097	25,094	32,052
UI Claims	1,530	825	705	11,163	12,693	12,875	14,766	16,705
Change from:								
Previous Week	69	28	41	-251	-182			
Year Ago	-281	-200	-81	-1,792	-2,073			
Two Years Ago	-572	-395	-177	-3,440	-4,012			
EUC08 Claims	405	219	186	4,696	5,101	5,250	9,137	13,207
Interstate-Liable	30	11	19	651	681	657	585	624
Workshare	2	0	2	457	459	315	606	1,516
Workshare Equivalency	0	0	0	126	126	81	148	427
UI Exhaustions	-	-	-	284	284	266	343	429
EUC08 Exhaustions	-	-	-	5	5	3	125	216
TDI Claims	940	774	166	7,183	8,123	6,608	8,837	7,718
Change from:								
Previous Week	416	332	84	1,099	1,515			
Year Ago	-21	5	-26	-693	-714			

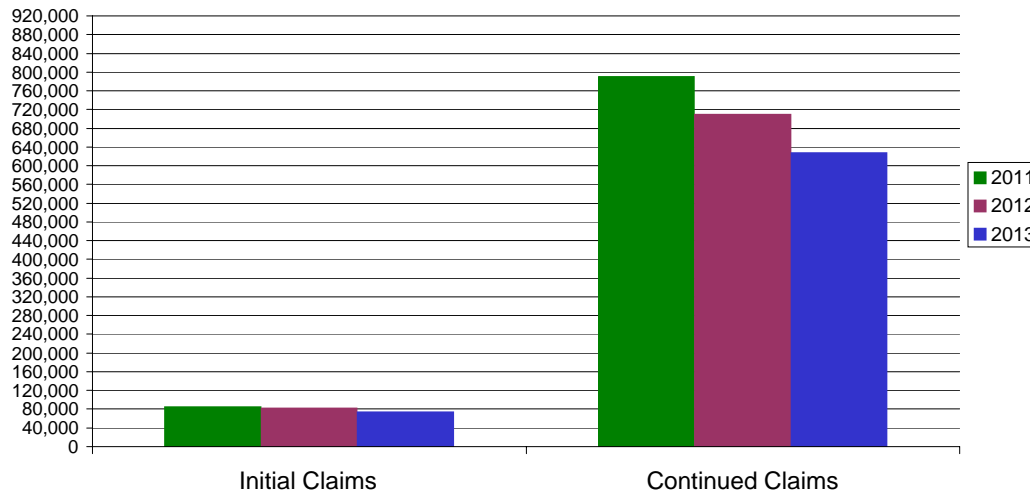
* Includes UI, EUC08, Workshare & Interstate Liable.

Equal Opportunity Employer / Program / Auxiliary aids and services available upon request to individuals with disabilities / TTY via RI Relay 711.

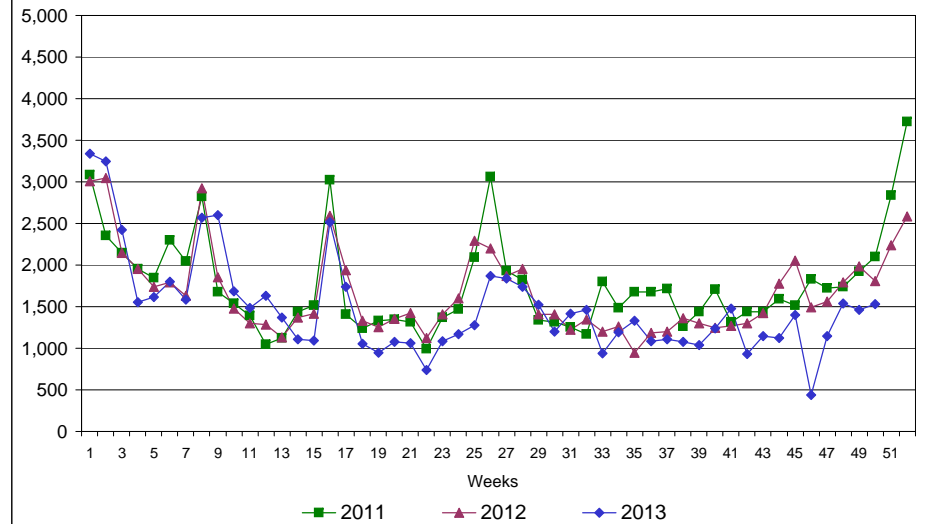
Rhode Island Department of Labor and Training

December 14, 2013

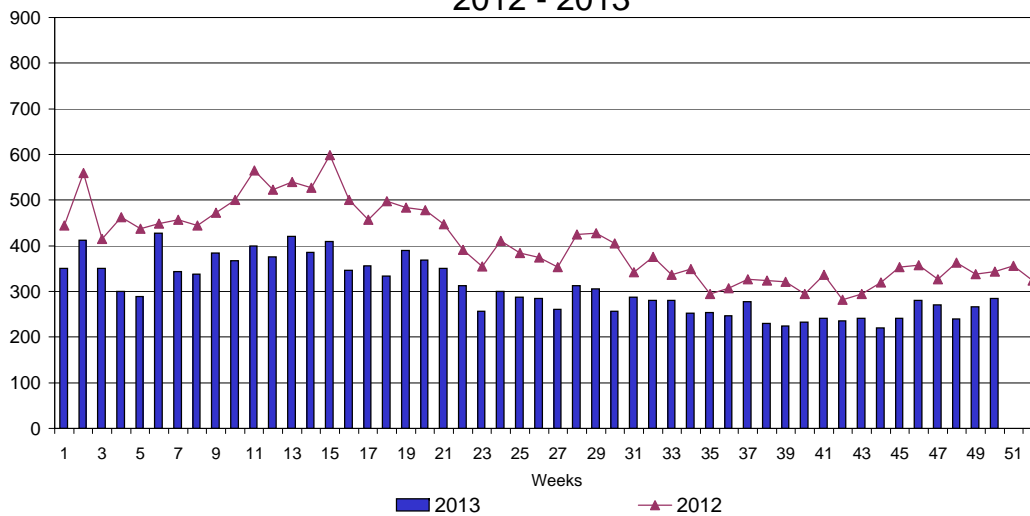
UI Claims Comparison Year to Date



UI Initial Claims 2011 - 2013



UI Exhaustions 2012 - 2013



TDI Claims Comparison Year to Date

