



## *Rhode Island Department of Labor and Training*

# *Weekly Update of Claims Activity*

*Week Ending: December 28, 2013*

### *Unemployment Insurance*

**Initial Claims** – 2,372 initial claims were processed during the week ending 12/28/13, an increase of 646 from the previous week, and a decrease of 210 from a year ago. The number of initial claims filed to date is down 10.0 percent from last year and down 14.8 percent from two years ago.

**Continued Claims** – 11,751 continued claims were processed during the week of 12/28/13, an increase of 152 from the previous week and a decrease of 1,859 from a year ago. The number of continued claims filed to date is down 11.6 percent from last year and down 20.7 percent from two years ago.

**Workshare** – gives employers an alternative to layoffs by allowing employees to work reduced hours and collect a percentage of regular UI benefits to compensate for lost pay. This week, 7 initial claims and 453 continued claims were processed. An estimated 2 layoffs were prevented this week, as a result of Workshare.

**Emergency Unemployment Compensation 08** – EUC08, which became effective July 6, 2008, provides up to 53 weeks of federally funded benefits to eligible individuals who exhausted their UI claims. This week there were 162 new EUC08 claims processed and 5,242 continued claims processed (1,957 under tier I, 1,504 under tier II, 841 under tier III and 940 under tier IV).

**Exhaustions** – 267 individuals exhausted their regular payments this week, a decrease of 25 from the previous week. There were 7 individuals that exhausted EUC08.

### *Temporary Disability Insurance*

**Temporary Disability Insurance** – 367 initial claims and 5,995 continued claims were processed for Temporary Disability Insurance. The average weekly TDI payment is \$457 per week. Rhode Island is currently paying an average of 11.0 weeks per new claim.

	<b>Initial Claims</b>			<b>Continued Claims</b>	<b>TOTAL - Initial and Continued Claims</b>			
	<b>Total</b>	<b>New</b>	<b>Additional</b>		<b>Current Week</b>	<b>Previous Week</b>	<b>Year Ago</b>	<b>Two Years Ago</b>
<b>Total - All programs*</b>	2,705	1,278	1,427	18,058	20,763	19,979	26,027	33,975
<b>UI Claims</b>	2,372	1,097	1,275	11,751	14,123	13,325	16,192	19,352
Change from:								
Previous Week	646	257	389	152	798			
Year Ago	-210	-224	14	-1,859	-2,069			
Two Years Ago	-1,348	-517	-831	-3,881	-5,229			
<b>EUC08 Claims</b>	295	162	133	5,242	5,537	5,672	8,661	12,747
<b>Interstate-Liable</b>	31	17	14	612	643	657	554	605
<b>Workshare</b>	7	2	5	453	460	325	620	1,271
<b>Workshare Equivalency</b>	2	1	1	124	126	78	152	322
<b>UI Exhaustions</b>	-	-	-	267	267	292	324	391
<b>EUC08 Exhaustions</b>	-	-	-	7	7	9	135	233
<b>TDI Claims</b>	367	314	53	5,995	6,362	7,502	6,170	6,307
Change from:								
Previous Week	-622	-518	-104	-518	-1,140			
Year Ago	113	136	-23	79	192			

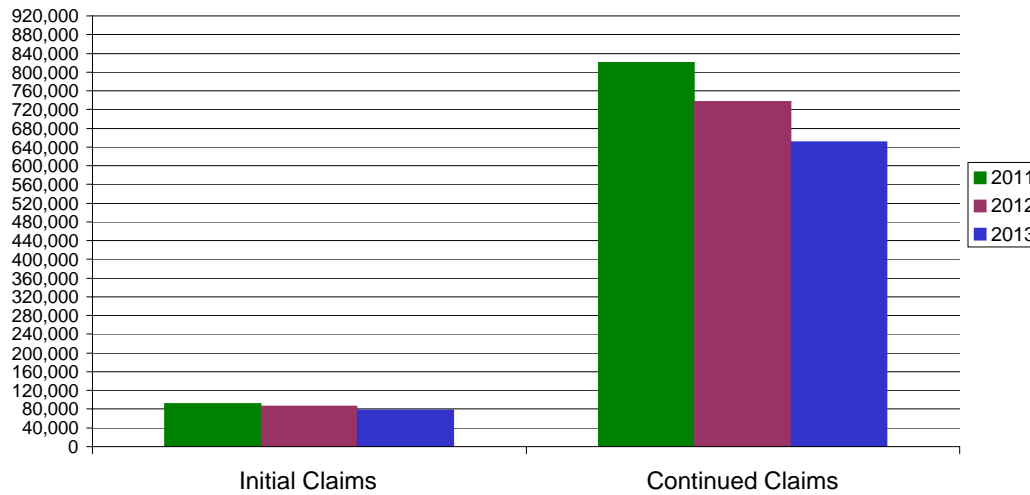
\* Includes UI, EUC08, Workshare & Interstate Liable.

Equal Opportunity Employer / Program / Auxiliary aids and services available upon request to individuals with disabilities / TTY via RI Relay 711.

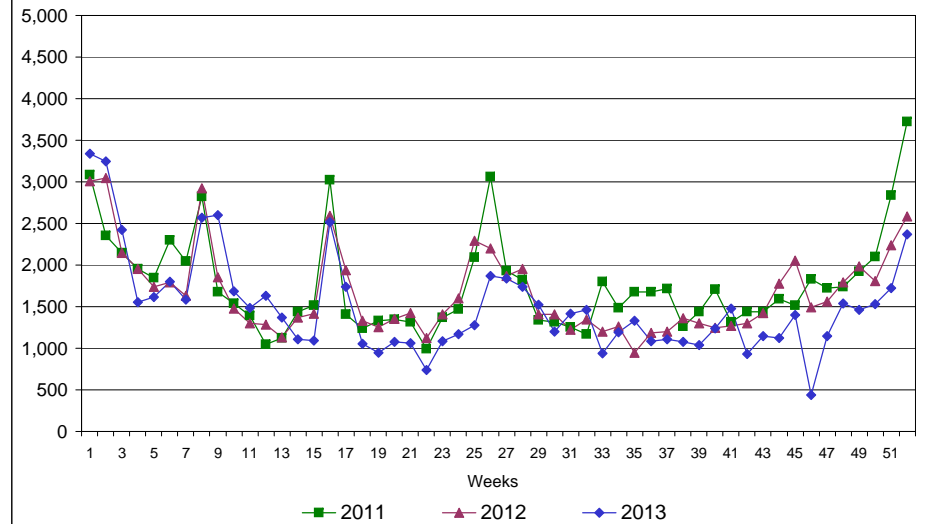
# Rhode Island Department of Labor and Training

## December 28, 2013

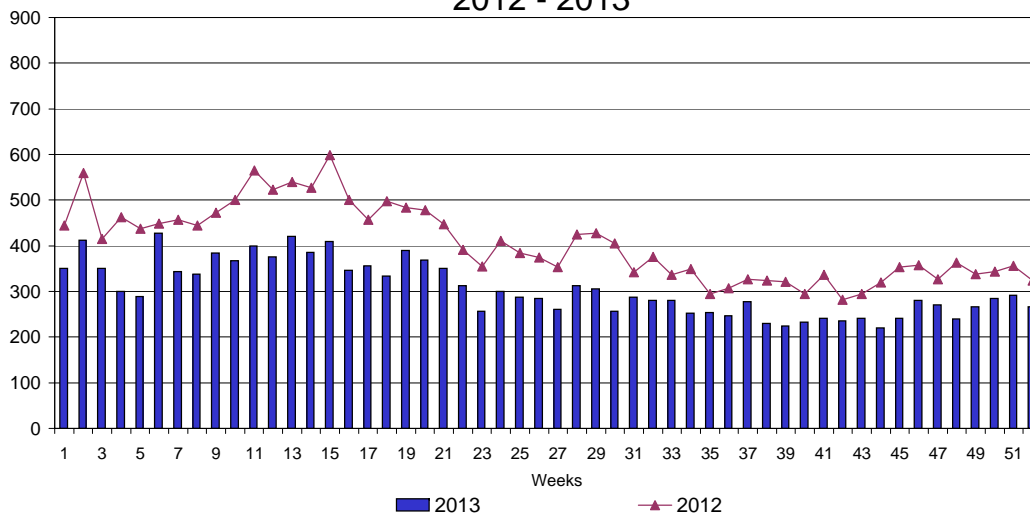
### UI Claims Comparison Year to Date



### UI Initial Claims 2011 - 2013



### UI Exhaustions 2012 - 2013



### TDI Claims Comparison Year to Date

