



Rhode Island Department of Labor and Training

Weekly Update of Claims Activity

Week Ending: January 4, 2014

Unemployment Insurance

Initial Claims – 1,675 initial claims were processed during the week ending 1/4/14, a decrease of 697 from the previous week, and a decrease of 1,665 from a year ago.

Continued Claims – 13,493 continued claims were processed during the week of 1/4/14, an increase of 1,742 from the previous week and a decrease of 2,857 from a year ago.

Workshare – gives employers an alternative to layoffs by allowing employees to work reduced hours and collect a percentage of regular UI benefits to compensate for lost pay. This week, 3 initial claims and 92 continued claims were processed. There were not any layoffs prevented this week, as a result of Workshare.

Emergency Unemployment Compensation 08 – EUC08, which became effective July 6, 2008, provides up to 53 weeks of federally funded benefits to eligible individuals who exhausted their UI claims. This week there were 95 new EUC08 claims processed and 5,180 continued claims processed (1,865 under tier I, 1,488 under tier II, 812 under tier III and 1,015 under tier IV).

Exhaustions – 273 individuals exhausted their regular payments this week, an increase of 6 from the previous week. There were 6 individuals that exhausted EUC08.

Temporary Disability Insurance

Temporary Disability Insurance – 313 initial claims and 6,538 continued claims were processed for Temporary Disability Insurance. The average weekly TDI payment is \$453 per week. Rhode Island is currently paying an average of 11.1 weeks per new claim.

	Initial Claims			Continued Claims	TOTAL - Initial and Continued Claims			
	Total	New	Additional		Current Week	Previous Week	Year Ago	Two Years Ago
Total - All programs*	1,884	959	925	19,387	21,271	20,763	28,491	36,309
UI Claims	1,675	847	828	13,493	15,168	14,123	19,690	22,009
Change from:								
Previous Week	-697	-250	-447	1,742	1,045			
Year Ago	-1,665	-701	-964	-2,857	-4,522			
Two Years Ago	-1,329	-955	-374	-5,512	-6,841			
EUC08 Claims	174	95	79	5,180	5,354	5,537	7,899	12,975
Interstate-Liable	32	17	15	622	654	643	557	638
Workshare	3	0	3	92	95	460	345	687
Workshare Equivalency	0	0	0	17	17	126	107	302
UI Exhaustions	-	-	-	273	273	267	350	445
EUC08 Exhaustions	-	-	-	6	6	7	97	238
TDI Claims	313	243	70	6,538	6,851	6,362	7,089	6,888
Change from:								
Previous Week	-54	-71	17	543	489			
Year Ago	-311	-238	-73	73	-238			

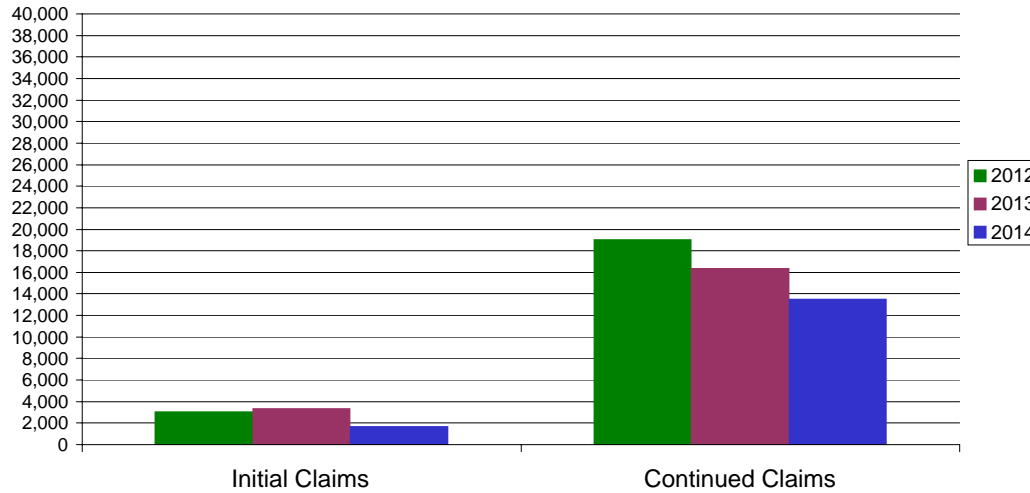
* Includes UI, EUC08, Workshare & Interstate Liable.

Equal Opportunity Employer / Program / Auxiliary aids and services available upon request to individuals with disabilities / TTY via RI Relay 711.

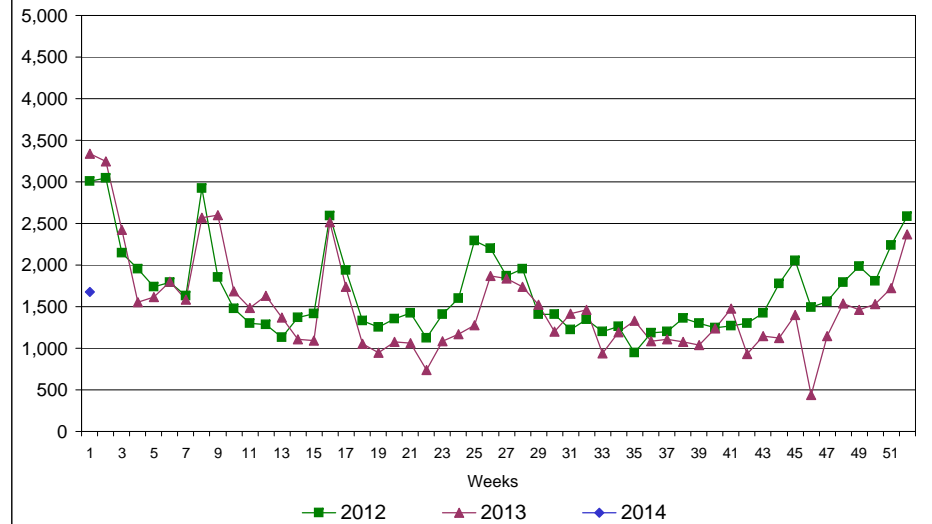
Rhode Island Department of Labor and Training

January 4, 2014

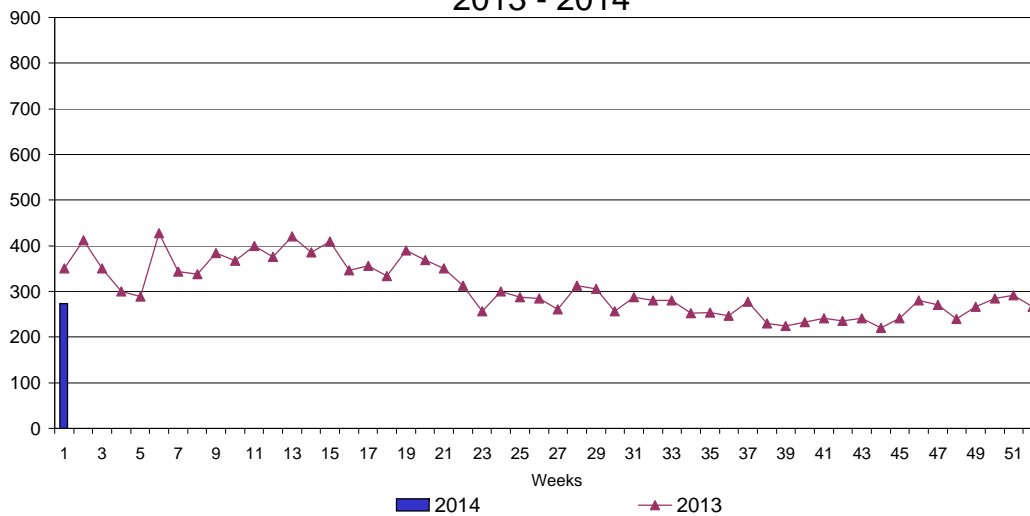
UI Claims Comparison Year to Date



UI Initial Claims 2012 - 2014



UI Exhaustions 2013 - 2014



TDI Claims Comparison Year to Date

