



Rhode Island Department of Labor and Training

Weekly Update of Claims Activity

Week Ending: January 11, 2014

Unemployment Insurance

Initial Claims – 2,440 initial claims were processed during the week ending 1/11/14, an increase of 765 from the previous week, and a decrease of 808 from a year ago.

Continued Claims – 15,479 continued claims were processed during the week of 1/11/14, an increase of 1,986 from the previous week and a decrease of 1,913 from a year ago.

Workshare – gives employers an alternative to layoffs by allowing employees to work reduced hours and collect a percentage of regular UI benefits to compensate for lost pay. This week, 17 initial claims and 235 continued claims were processed. There were 3 layoffs prevented this week, as a result of Workshare.

Emergency Unemployment Compensation 08 – EUC08, which became effective July 6, 2008, provides up to 53 weeks of federally funded benefits to eligible individuals who exhausted their UI claims. This week there were 92 new EUC08 claims processed and 4,771 continued claims processed (1,724 under tier I, 1,313 under tier II, 733 under tier III and 1,001 under tier IV).

Exhaustions – 333 individuals exhausted their regular payments this week, an increase of 60 from the previous week and a decrease of 79 from a year ago.

Temporary Disability Insurance

Temporary Disability Insurance – 1,192 initial claims and 7,207 continued claims were processed for Temporary Disability Insurance. The average weekly TDI payment is \$452 per week. Rhode Island is currently paying an average of 11.0 weeks per new claim.

	Initial Claims			Continued Claims	TOTAL - Initial and Continued Claims			
	Total	New	Additional		Current Week	Previous Week	Year Ago	Two Years Ago
Total - All programs*	2,669	1,676	993	21,163	23,832	21,271	29,311	35,500
UI Claims	2,440	1,558	882	15,479	17,919	15,168	20,640	20,898
Change from:								
Previous Week	765	711	54	1,986	2,751			
Year Ago	-808	-287	-521	-1,913	-2,721			
Two Years Ago	-604	-553	-51	-2,375	-2,979			
EUC08 Claims	162	92	70	4,771	4,933	5,354	7,517	12,970
Interstate-Liable	50	26	24	678	728	654	605	577
Workshare	17	0	17	235	252	95	549	1,055
Workshare Equivalency	3	0	3	79	82	17	196	381
UI Exhaustions	-	-	-	333	333	273	412	560
EUC08 Exhaustions	-	-	-	0	0	6	145	230
TDI Claims	1,192	984	208	7,207	8,399	6,851	7,799	7,182
Change from:								
Previous Week	879	741	138	699	1,578			
Year Ago	179	138	41	421	600			

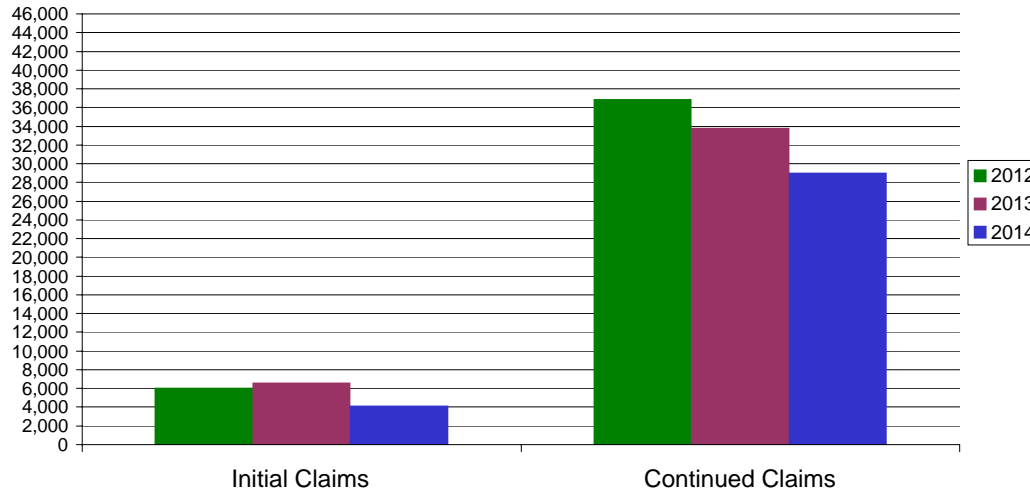
* Includes UI, EUC08, Workshare & Interstate Liable.

Equal Opportunity Employer / Program / Auxiliary aids and services available upon request to individuals with disabilities / TTY via RI Relay 711.

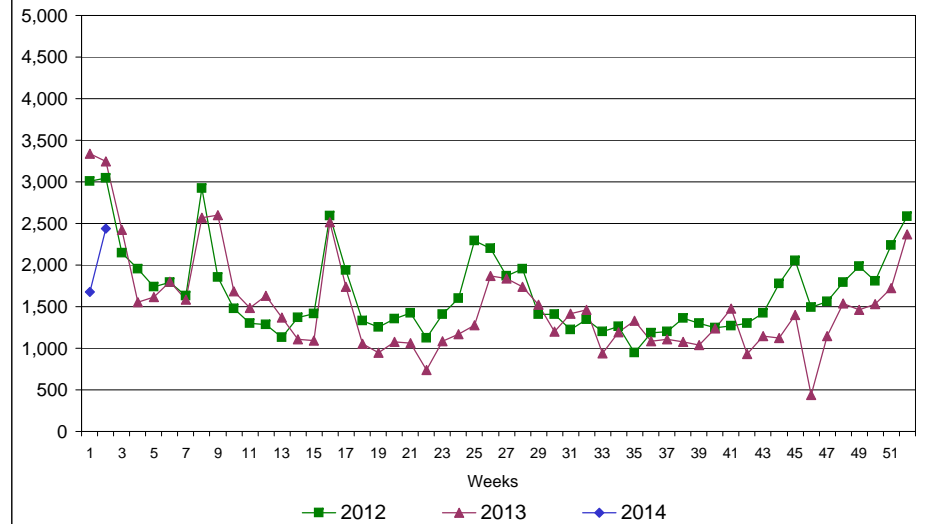
Rhode Island Department of Labor and Training

January 11, 2014

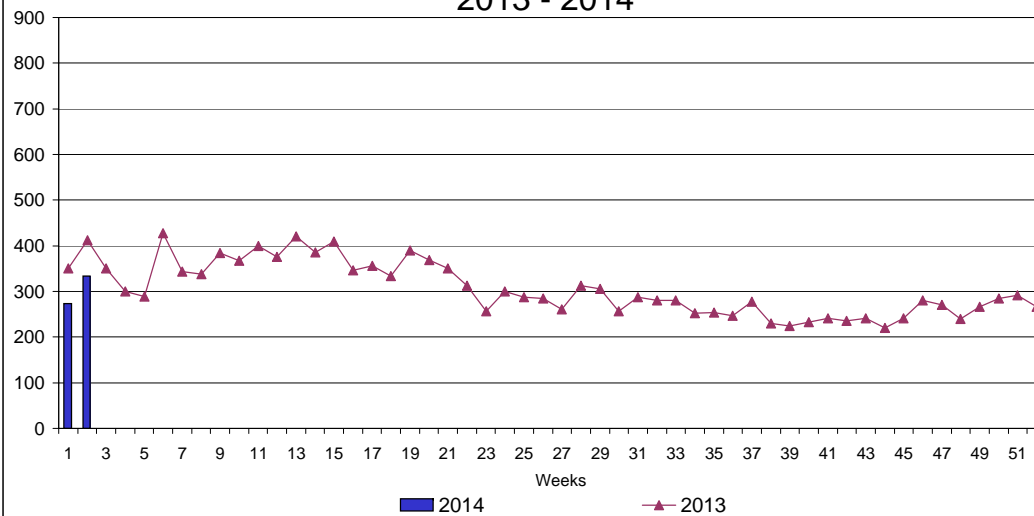
UI Claims Comparison Year to Date



UI Initial Claims 2012 - 2014



UI Exhaustions 2013 - 2014



TDI Claims Comparison Year to Date

