



Rhode Island Department of Labor and Training

Weekly Update of Claims Activity

Week Ending: January 25, 2014

Unemployment Insurance

Initial Claims – 1,911 initial claims were processed during the week ending 1/25/14, a decrease of 840 from the previous week, and an increase of 358 from a year ago.

Continued Claims – 15,512 continued claims were processed during the week of 1/25/14, a decrease of 1,269 from the previous week and a decrease of 1,041 from a year ago.

Workshare – gives employers an alternative to layoffs by allowing employees to work reduced hours and collect a percentage of regular UI benefits to compensate for lost pay. This week, 10 initial claims and 229 continued claims were processed. There were 2 layoffs prevented this week, as a result of Workshare.

Emergency Unemployment Compensation 08 – EUC08, which became effective July 6, 2008, provides up to 53 weeks of federally funded benefits to eligible individuals who exhausted their UI claims. This week there were 24 new EUC08 claims processed and 3,809 continued claims processed (1,363 under tier I, 1,055 under tier II, 595 under tier III and 796 under tier IV).

Exhaustions – 258 individuals exhausted their regular payments this week, a decrease of 18 from the previous week and a decrease of 42 from a year ago.

Temporary Disability Insurance

Temporary Disability Insurance – 900 initial claims and 5,559 continued claims were processed for Temporary Disability Insurance. The average weekly TDI payment is \$447 per week. Rhode Island is currently paying an average of 11.0 weeks per new claim.

	Initial Claims			Continued Claims	TOTAL - Initial and Continued Claims			
	Total	New	Additional		Current Week	Previous Week	Year Ago	Two Years Ago
Total - All programs*	2,003	1,213	790	20,167	22,170	24,953	26,806	35,232
UI Claims	1,911	1,181	730	15,512	17,423	19,532	18,106	20,925
Change from:								
Previous Week	-840	-420	-420	-1,269	-2,109			
Year Ago	358	104	254	-1,041	-683			
Two Years Ago	-44	-102	58	-3,458	-3,502			
EUC08 Claims	65	24	41	3,809	3,874	4,508	7,516	12,523
Interstate-Liable	17	8	9	617	634	718	575	615
Workshare	10	0	10	229	239	195	609	1,169
Workshare Equivalency	2	0	2	73	75	50	150	283
UI Exhaustions	-	-	-	258	258	276	300	463
EUC08 Exhaustions	-	-	-	2	2	3	139	204
TDI Claims	900	740	160	5,559	6,459	6,309	7,396	7,829
Change from:								
Previous Week	459	410	49	-309	150			
Year Ago	345	271	74	-1,282	-937			

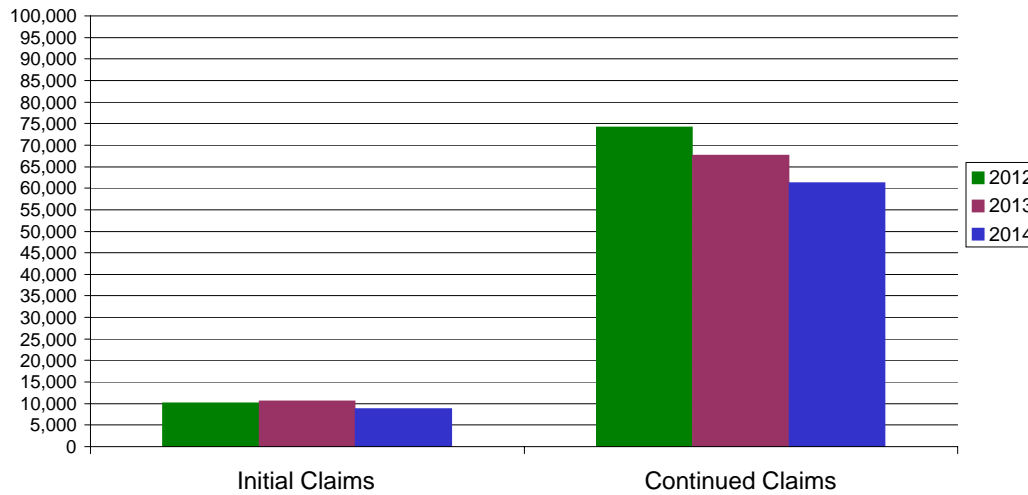
* Includes UI, EUC08, Workshare & Interstate Liable.

Equal Opportunity Employer / Program / Auxiliary aids and services available upon request to individuals with disabilities / TTY via RI Relay 711.

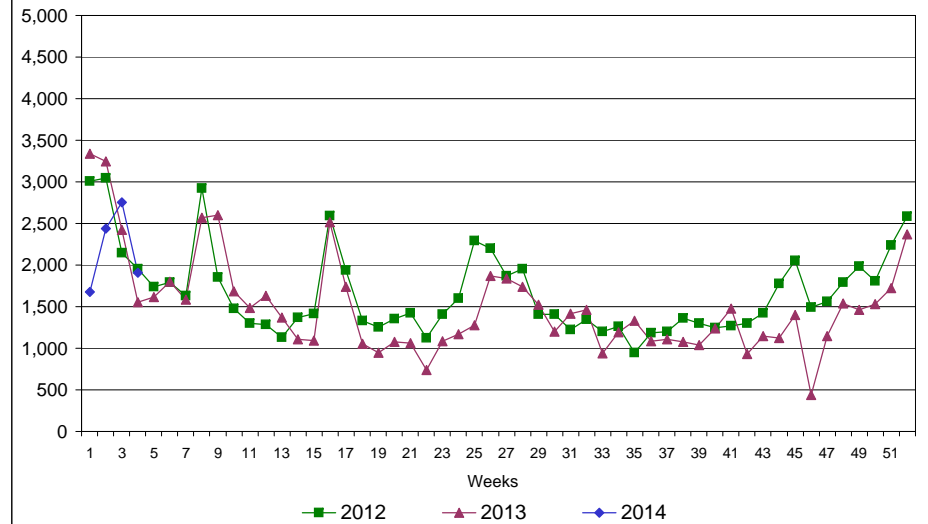
Rhode Island Department of Labor and Training

January 25, 2014

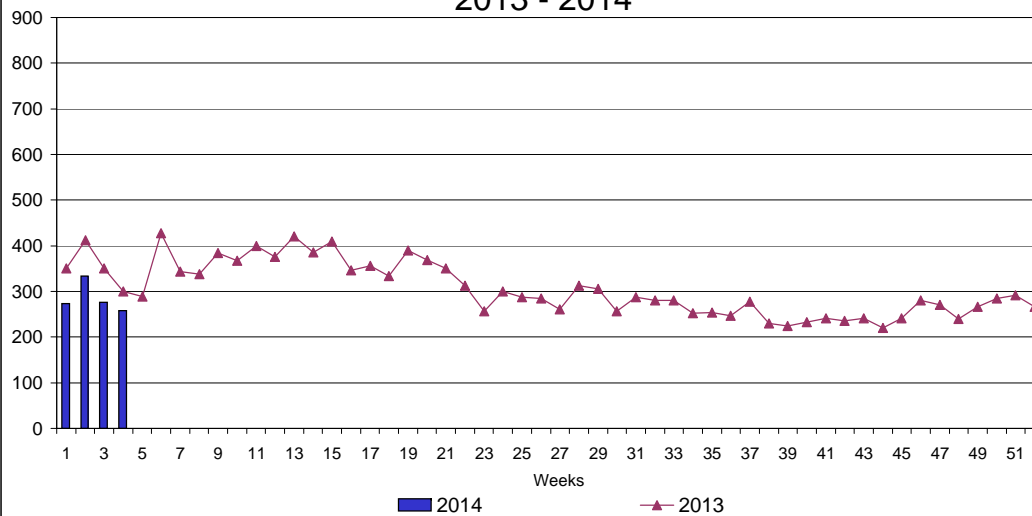
UI Claims Comparison Year to Date



UI Initial Claims 2012 - 2014



UI Exhaustions 2013 - 2014



TDI Claims Comparison Year to Date

