



Rhode Island Department of Labor and Training

Weekly Update of Claims Activity

Week Ending: February 8, 2014

Unemployment Insurance

Initial Claims – 2,032 initial claims were processed during the week ending 2/8/14, a decrease of 421 from the previous week, and an increase of 229 from a year ago.

Continued Claims – 17,029 continued claims were processed during the week of 2/8/14, a decrease of 467 from the previous week and a decrease of 121 from a year ago.

Workshare – gives employers an alternative to layoffs by allowing employees to work reduced hours and collect a percentage of regular UI benefits to compensate for lost pay. This week, 5 initial claims and 450 continued claims were processed. There was 1 layoff prevented this week, as a result of Workshare.

Emergency Unemployment Compensation 08 – EUC08, which became effective July 6, 2008, provided federally funded benefits to eligible individuals who exhausted their UI claims. The EUC benefit program expired on December 28, 2014. DLT has asked individuals to continue to certify weekly in the event the program is reinstated by Congress.

Exhaustions – 282 individuals exhausted their regular payments this week, an increase of 29 from the previous week and a decrease of 146 from a year ago.

Temporary Disability Insurance

Temporary Disability Insurance – 894 initial claims and 5,935 continued claims were processed for Temporary Disability Insurance. The average weekly TDI payment is \$459 per week. Rhode Island is currently paying an average of 11.0 weeks per new claim.

	Initial Claims			Continued Claims	TOTAL - Initial and Continued Claims			
	Total	New	Additional		Current Week	Previous Week	Year Ago	Two Years Ago
Total - All programs*	2,103	1,497	606	21,549	23,652	24,935	28,069	35,240
UI Claims	2,032	1,461	571	17,029	19,061	19,949	18,953	21,039
Change from:								
Previous Week	-421	-279	-142	-467	-888			
Year Ago	229	234	-5	-121	108			
Two Years Ago	237	313	-76	-2,215	-1,978			
EUC08 Claims	20	6	14	3,383	3,403	3,674	7,993	12,314
Interstate-Liable	46	30	16	687	733	718	600	631
Workshare	5	0	5	450	455	594	523	1,256
Workshare Equivalency	1	0	1	131	132	144	142	298
UI Exhaustions	-	-	-	282	282	253	428	449
EUC08 Exhaustions	-	-	-	0	0	1	148	237
TDI Claims	894	745	149	5,935	6,829	8,978	7,454	7,790
Change from:								
Previous Week	-155	-117	-38	-1,994	-2,149			
Year Ago	269	215	54	-894	-625			

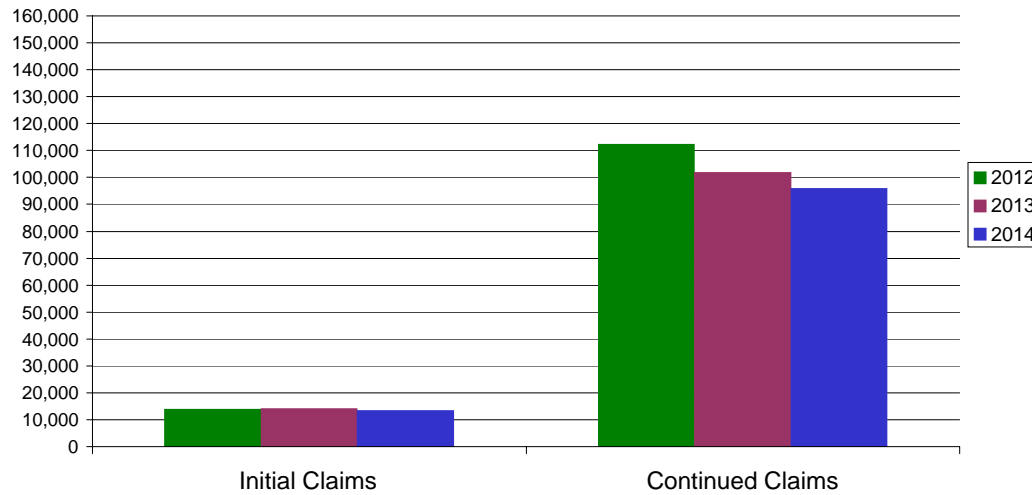
* Includes UI, EUC08, Workshare & Interstate Liable.

Equal Opportunity Employer / Program / Auxiliary aids and services available upon request to individuals with disabilities / TTY via RI Relay 711.

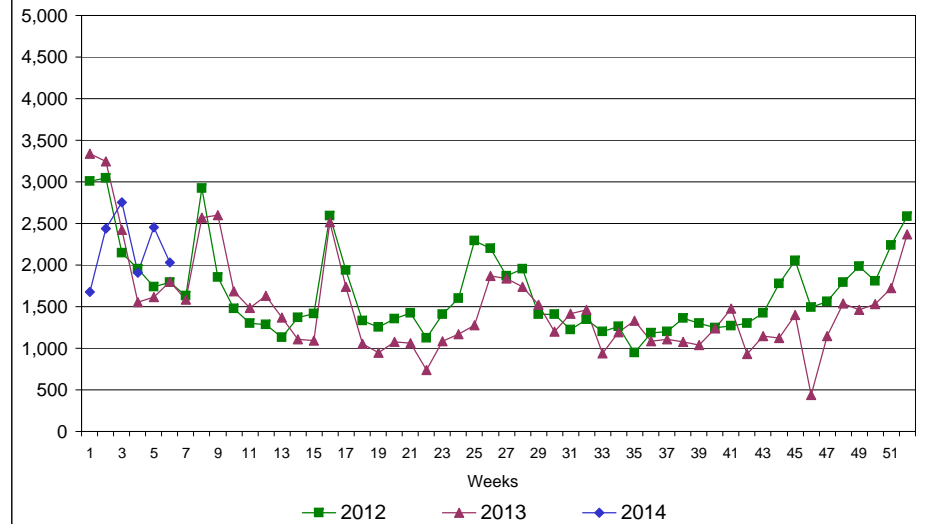
Rhode Island Department of Labor and Training

February 8, 2014

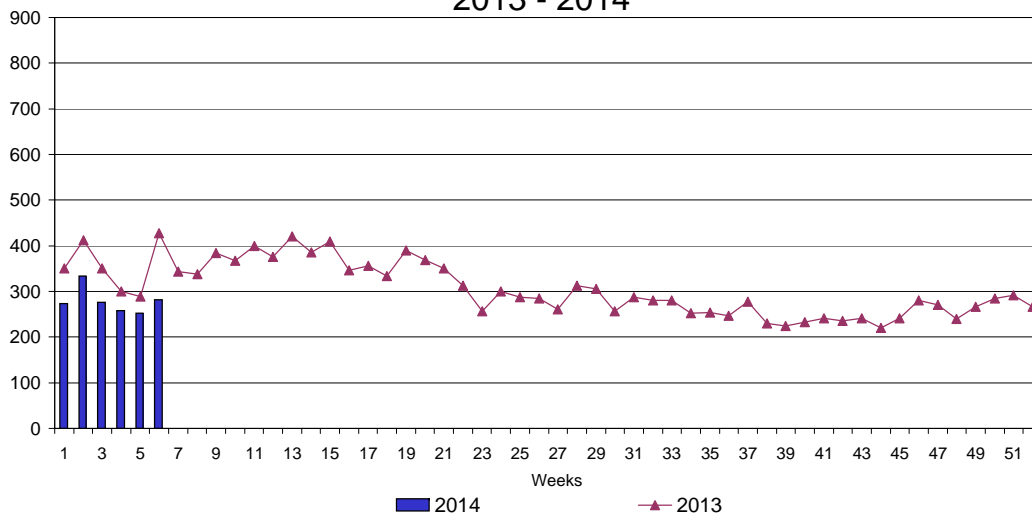
UI Claims Comparison Year to Date



UI Initial Claims 2012 - 2014



UI Exhaustions 2013 - 2014



TDI Claims Comparison Year to Date

