



## Rhode Island Department of Labor and Training

# *Weekly Update of Claims Activity*

**Week Ending: March 1, 2014**

### *Unemployment Insurance*

**Initial Claims** – 2,261 initial claims were processed during the week ending 3/1/14, a decrease of 528 from the previous week, and a decrease of 337 from a year ago. The number of initial claims filed to date is down 1.9 percent from last year and up 1.3% from two years ago.

**Continued Claims** – 18,811 continued claims were processed during the week of 3/1/14, an increase of 1,623 from the previous week and a decrease of 788 from a year ago. The number of continued claims filed to date is down 4.5 percent from last year and down 13.3 percent from two years ago.

**Workshare** – gives employers an alternative to layoffs by allowing employees to work reduced hours and collect a percentage of regular UI benefits to compensate for lost pay. This week, 36 initial claim and 354 continued claims were processed. There were 11 layoffs prevented this week, as a result of Workshare.

**Emergency Unemployment Compensation 08** – EUC08, which became effective July 6, 2008, provided federally funded benefits to eligible individuals who exhausted their UI claims. The EUC benefit program expired on December 28, 2013. DLT had asked individuals to continue to certify weekly in the event the program is reinstated by Congress. As of February 28, 2014 DLT is no longer requesting weekly certification.

**Exhaustions** – 279 individuals exhausted their regular payments this week, a decrease of 4 from the previous week and a decrease of 105 from a year ago.

### *Temporary Disability Insurance*

**Temporary Disability Insurance** – 1,019 initial claims and 7,034 continued claims were processed for Temporary Disability Insurance. The average weekly TDI payment is \$452 per week. Rhode Island is currently paying an average of 10.9 weeks per new claim.

	Initial Claims			Continued Claims	TOTAL - Initial and Continued Claims			
	Total	New	Additional		Current Week	Previous Week	Year Ago	Two Years Ago
<b>Total - All programs*</b>	2,342	1,342	1,000	21,134	23,476	23,889	31,652	37,090
<b>UI Claims</b>	2,261	1,287	974	18,811	21,072	19,977	22,197	23,288
Change from:								
Previous Week	-528	113	-641	1,623	1,095			
Year Ago	-337	227	-564	-788	-1,125			
Two Years Ago	405	380	25	-2,621	-2,216			
<b>EUC08 Claims</b>	5	3	2	1,250	1,255	2,732	8,387	12,238
<b>Interstate-Liable</b>	40	21	19	719	759	749	631	640
<b>Workshare</b>	36	31	5	354	390	431	437	924
<b>Workshare Equivalency</b>	11	10	1	93	104	109	118	245
<b>UI Exhaustions</b>	-	-	-	279	279	275	384	472
<b>EUC08 Exhaustions</b>	-	-	-	2	2	2	126	224
<b>TDI Claims</b>	1,019	839	180	7,034	8,053	7,881	8,097	8,373
Change from:								
Previous Week	-120	-91	-29	292	172			
Year Ago	456	378	78	-500	-44			

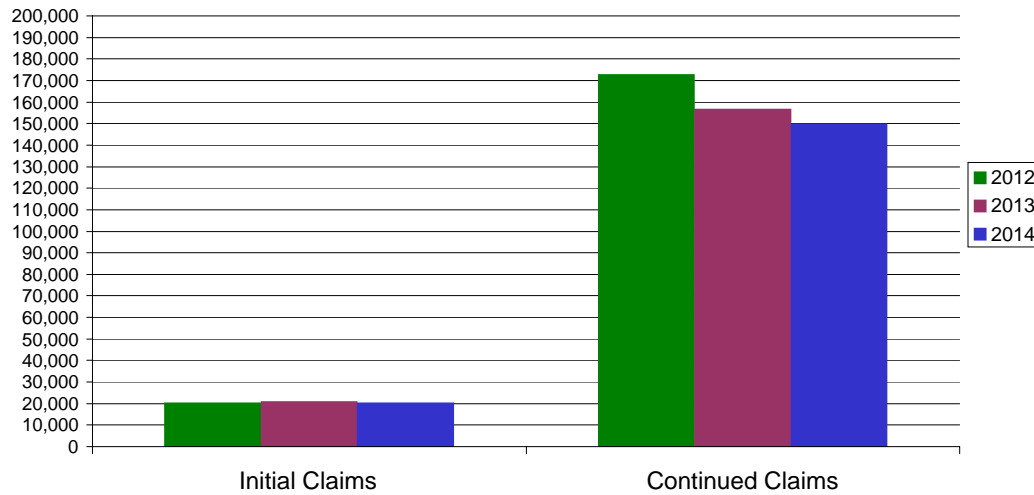
\* Includes UI, EUC08, Workshare & Interstate Liable.

Equal Opportunity Employer / Program / Auxiliary aids and services available upon request to individuals with disabilities / TTY via RI Relay 711.

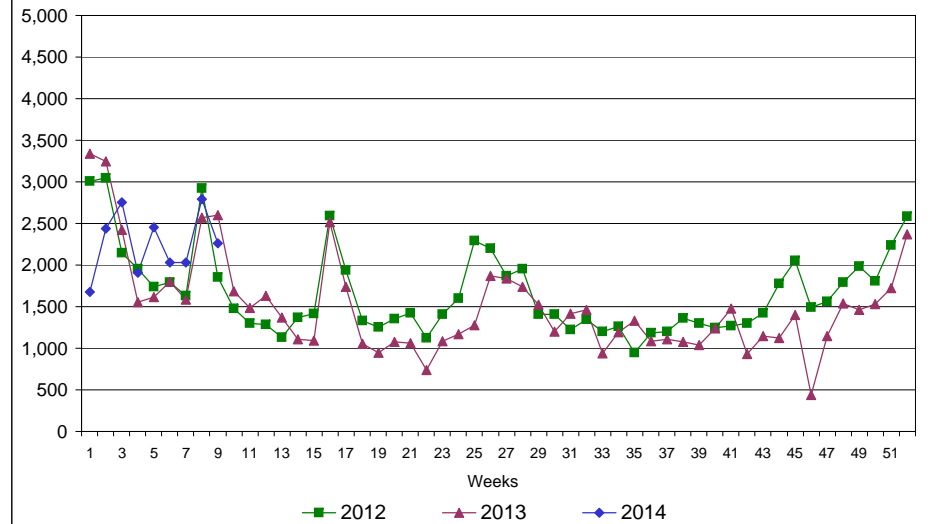
# Rhode Island Department of Labor and Training

## March 1, 2014

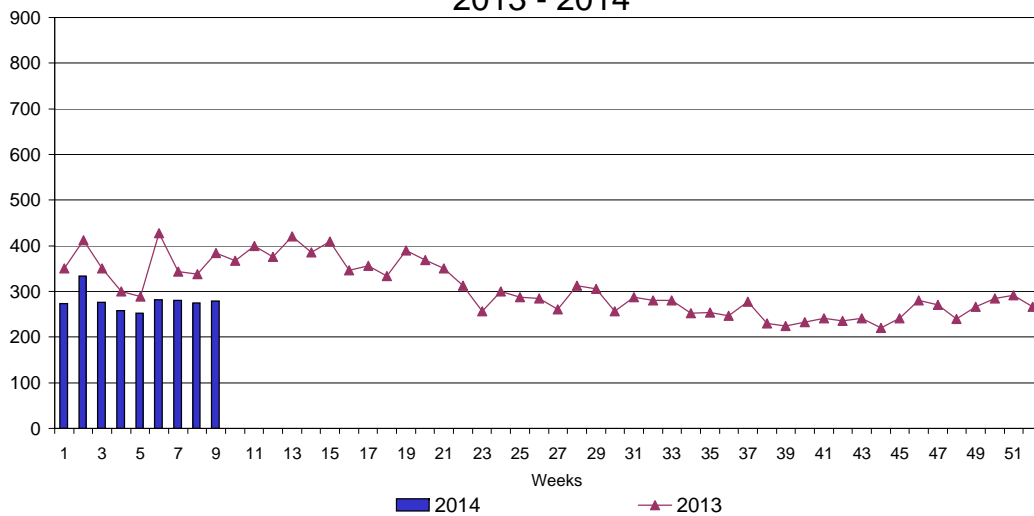
### UI Claims Comparison Year to Date



### UI Initial Claims 2012 - 2014



### UI Exhaustions 2013 - 2014



### TDI Claims Comparison Year to Date

