



Rhode Island Department of Labor and Training

Weekly Update of Claims Activity

Week Ending: March 8, 2014

Unemployment Insurance

Initial Claims – 1,673 initial claims were processed during the week ending 3/8/14, a decrease of 588 from the previous week, and a decrease of 14 from a year ago. The number of initial claims filed to date is down 1.8 percent from last year and up 2.1 percent from two years ago.

Continued Claims – 17,259 continued claims were processed during the week of 3/8/14, a decrease of 1,552 from the previous week and a decrease of 677 from a year ago. The number of continued claims filed to date is down 4.4 percent from last year and down 12.9 percent from two years ago.

Workshare – gives employers an alternative to layoffs by allowing employees to work reduced hours and collect a percentage of regular UI benefits to compensate for lost pay. This week, 64 initial claim and 394 continued claims were processed. There were 18 layoffs prevented this week, as a result of Workshare.

Emergency Unemployment Compensation 08 – EUC08, which became effective July 6, 2008, provided federally funded benefits to eligible individuals who exhausted their UI claims. The EUC benefit program expired on December 28, 2013. DLT had asked individuals to continue to certify weekly in the event the program is reinstated by Congress. As of February 28, 2014 DLT is no longer requesting weekly certification.

Exhaustions – 308 individuals exhausted their regular payments this week, an increase of 29 from the previous week and a decrease of 59 from a year ago.

Temporary Disability Insurance

Temporary Disability Insurance – 943 initial claims and 7,286 continued claims were processed for Temporary Disability Insurance. The average weekly TDI payment is \$454 per week. Rhode Island is currently paying an average of 10.8 weeks per new claim.

	Initial Claims			Continued Claims	TOTAL - Initial and Continued Claims			
	Total	New	Additional		Current Week	Previous Week	Year Ago	Two Years Ago
Total - All programs*	1,786	1,156	630	18,396	20,182	22,221	20,732	22,773
UI Claims	1,673	1,060	613	17,259	18,932	21,072	19,623	20,388
Change from:								
Previous Week	-588	-227	-361	-1,552	-2,140			
Year Ago	-14	172	-186	-677	-691			
Two Years Ago	195	132	63	-1,651	-1,456			
Interstate-Liable	49	35	14	743	792	759	565	586
Workshare	64	61	3	394	458	390	544	1,799
Workshare Equivalency	18	17	1	102	120	104	144	465
UI Exhaustions	-	-	-	308	308	279	367	501
TDI Claims	943	760	183	7,286	8,229	8,053	8,361	8,969
Change from:								
Previous Week	-76	-79	3	252	176			
Year Ago	-24	-28	4	-108	-132			

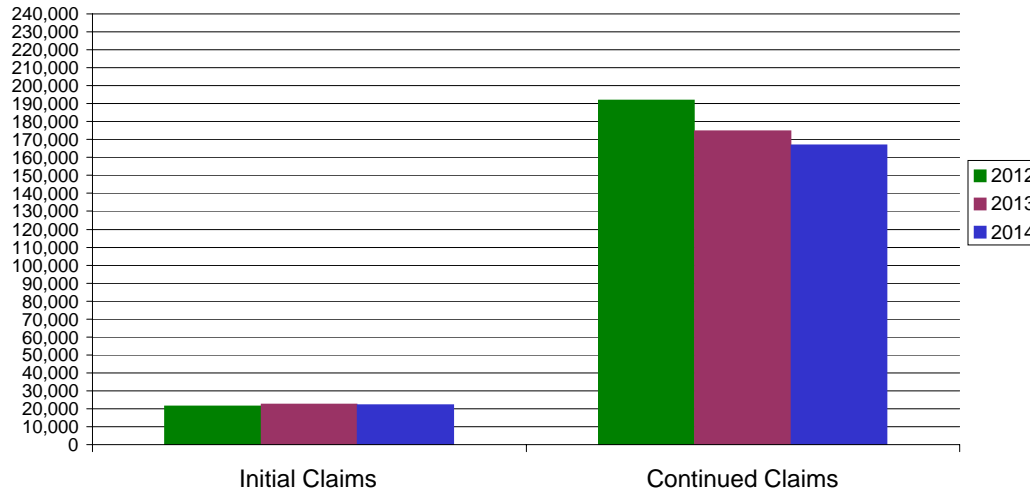
* Includes UI, EUC08, Workshare & Interstate Liable.

Equal Opportunity Employer / Program / Auxiliary aids and services available upon request to individuals with disabilities / TTY via RI Relay 711.

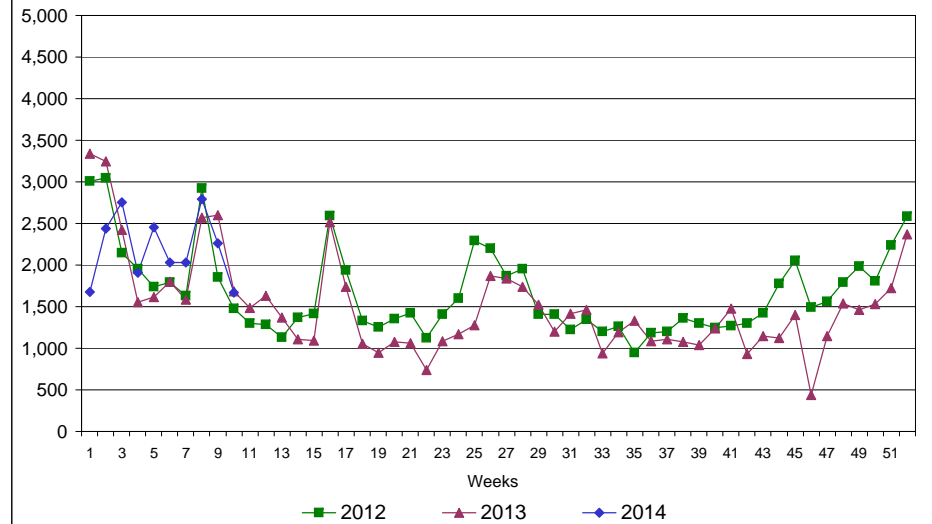
Rhode Island Department of Labor and Training

March 8, 2014

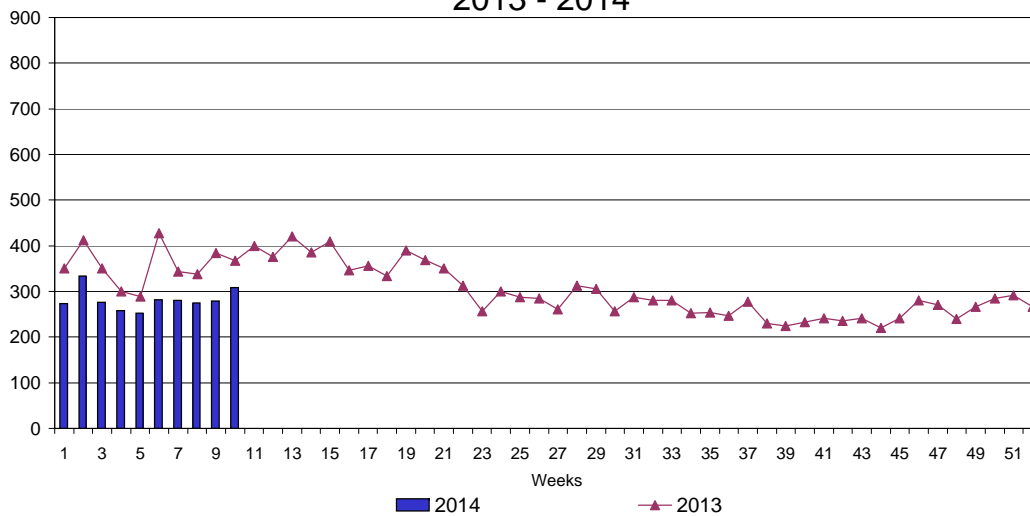
UI Claims Comparison Year to Date



UI Initial Claims 2012 - 2014



UI Exhaustions 2013 - 2014



TDI Claims Comparison Year to Date

