



## Rhode Island Department of Labor and Training

# *Weekly Update of Claims Activity*

*Week Ending: March 15, 2014*

### *Unemployment Insurance*

**Initial Claims** – 1,365 initial claims were processed during the week ending 3/15/14, a decrease of 308 from the previous week, and a decrease of 116 from a year ago. The number of initial claims filed to date is down 2.2 percent from last year and up 2.2 percent from two years ago.

**Continued Claims** – 16,789 continued claims were processed during the week of 3/15/14, a decrease of 470 from the previous week and a decrease of 774 from a year ago. The number of continued claims filed to date is down 4.4 percent from last year and down 12.6 percent from two years ago.

**Workshare** – gives employers an alternative to layoffs by allowing employees to work reduced hours and collect a percentage of regular UI benefits to compensate for lost pay. This week, 73 initial claim and 387 continued claims were processed. There were 60 layoffs prevented this week, as a result of Workshare.

**Emergency Unemployment Compensation 08** – EUC08, which became effective July 6, 2008, provided federally funded benefits to eligible individuals who exhausted their UI claims. The EUC benefit program expired on December 28, 2013. DLT had asked individuals to continue to certify weekly in the event the program is reinstated by Congress. As of February 28, 2014 DLT is no longer requesting weekly certification.

**Exhaustions** – 320 individuals exhausted their regular payments this week, an increase of 12 from the previous week and a decrease of 80 from a year ago.

### *Temporary Disability Insurance*

**Temporary Disability Insurance** – 562 initial claims and 7,204 continued claims were processed for Temporary Disability Insurance. The average weekly TDI payment is \$448 per week. Rhode Island is currently paying an average of 10.8 weeks per new claim.

	<b>Initial Claims</b>			<b>Continued Claims</b>	<b>TOTAL - Initial and Continued Claims</b>			
	<b>Total</b>	<b>New</b>	<b>Additional</b>		<b>Current Week</b>	<b>Previous Week</b>	<b>Year Ago</b>	<b>Two Years Ago</b>
<b>Total - All programs*</b>	1,469	949	520	17,881	19,350	20,182	20,506	21,396
<b>UI Claims</b>	1,365	856	509	16,789	18,154	18,932	19,044	19,945
Change from:								
Previous Week	-308	-204	-104	-470	-778			
Year Ago	-116	1	-117	-774	-890			
Two Years Ago	63	140	-77	-1,854	-1,791			
<b>Interstate-Liable</b>	31	22	9	705	736	792	601	607
<b>Workshare</b>	73	71	2	387	460	458	861	844
<b>Workshare Equivalency</b>	60	58	2	101	161	120	197	273
<b>UI Exhaustions</b>	-	-	-	320	320	308	400	565
<b>TDI Claims</b>	562	452	110	7,204	7,766	8,229	7,750	7,813
Change from:								
Previous Week	-381	-308	-73	-82	-463			
Year Ago	-31	-47	16	47	16			

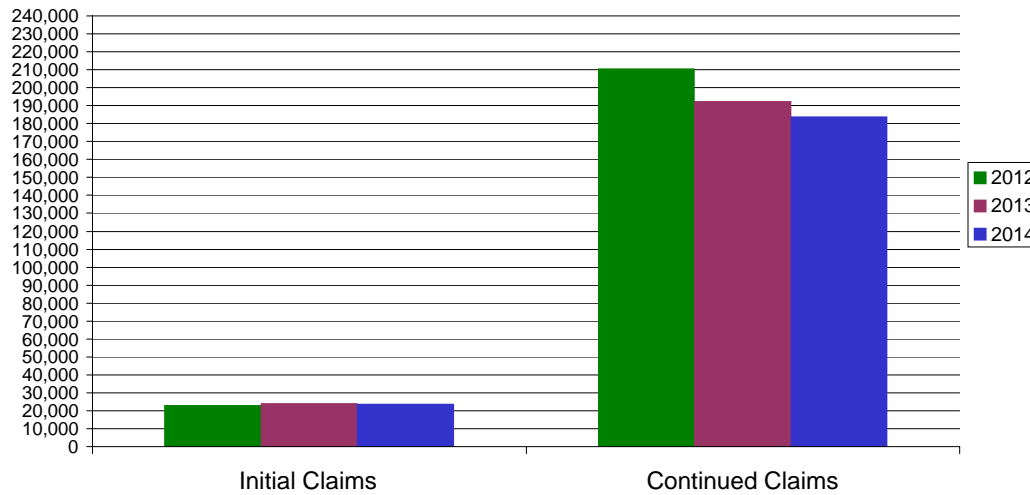
\* Includes UI, EUC08, Workshare & Interstate Liable.

Equal Opportunity Employer / Program / Auxiliary aids and services available upon request to individuals with disabilities / TTY via RI Relay 711.

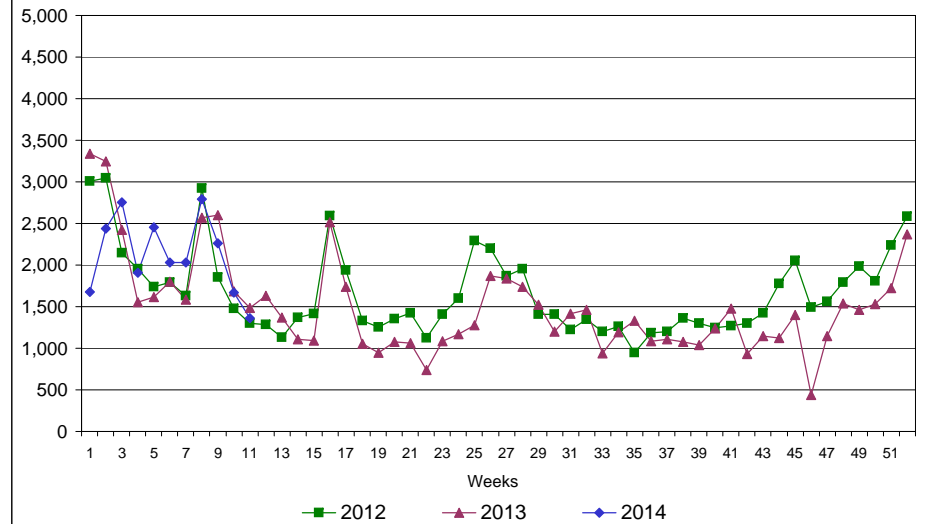
# Rhode Island Department of Labor and Training

## March 15, 2014

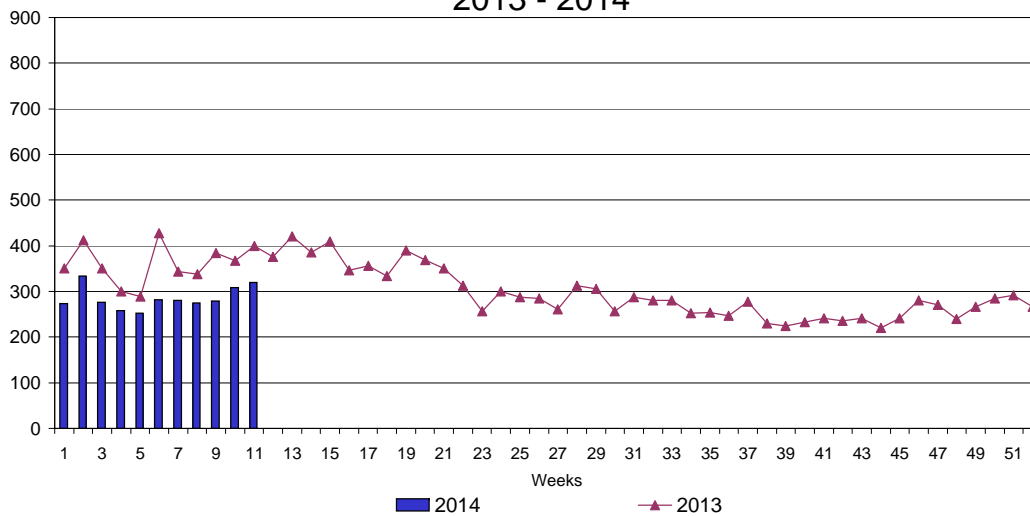
### UI Claims Comparison Year to Date



### UI Initial Claims 2012 - 2014



### UI Exhaustions 2013 - 2014



### TDI Claims Comparison Year to Date

