



Rhode Island Department of Labor and Training

Weekly Update of Claims Activity

Week Ending: March 22, 2014

Unemployment Insurance

Initial Claims – 1,136 initial claims were processed during the week ending 3/22/14, a decrease of 229 from the previous week, and a decrease of 495 from a year ago. The number of initial claims filed to date is down 4.0 percent from last year and up 1.5 percent from two years ago.

Continued Claims – 16,093 continued claims were processed during the week of 3/22/14, a decrease of 696 from the previous week and a decrease of 964 from a year ago. The number of continued claims filed to date is down 4.5 percent from last year and down 12.4 percent from two years ago.

Workshare – gives employers an alternative to layoffs by allowing employees to work reduced hours and collect a percentage of regular UI benefits to compensate for lost pay. This week, 106 initial claim and 295 continued claims were processed. There were 79 layoffs prevented this week, as a result of Workshare.

Emergency Unemployment Compensation 08 – EUC08, which became effective July 6, 2008, provided federally funded benefits to eligible individuals who exhausted their UI claims. The EUC benefit program expired on December 28, 2013. DLT had asked individuals to continue to certify weekly in the event the program is reinstated by Congress. As of February 28, 2014 DLT is no longer requesting weekly certification.

Exhaustions – 328 individuals exhausted their regular payments this week, an increase of 8 from the previous week and a decrease of 48 from a year ago.

Temporary Disability Insurance

Temporary Disability Insurance – 783 initial claims and 7,470 continued claims were processed for Temporary Disability Insurance. The average weekly TDI payment is \$446 per week. Rhode Island is currently paying an average of 10.9 weeks per new claim.

	Initial Claims			Continued Claims	TOTAL - Initial and Continued Claims			
	Total	New	Additional		Current Week	Previous Week	Year Ago	Two Years Ago
Total - All programs*	1,273	862	411	17,091	18,364	19,350	19,683	21,365
UI Claims	1,136	748	388	16,093	17,229	18,154	18,688	19,064
Change from:								
Previous Week	-229	-108	-121	-696	-925			
Year Ago	-495	-208	-287	-964	-1,459			
Two Years Ago	-146	-71	-75	-1,689	-1,835			
Interstate-Liable	31	22	9	703	734	736	549	612
Workshare	106	92	14	295	401	460	446	1,689
Workshare Equivalency	79	73	6	82	161	161	122	466
UI Exhaustions	-	-	-	328	328	320	376	523
TDI Claims	783	616	167	7,470	8,253	7,766	7,436	8,545
Change from:								
Previous Week	221	164	57	266	487			
Year Ago	46	33	13	771	817			

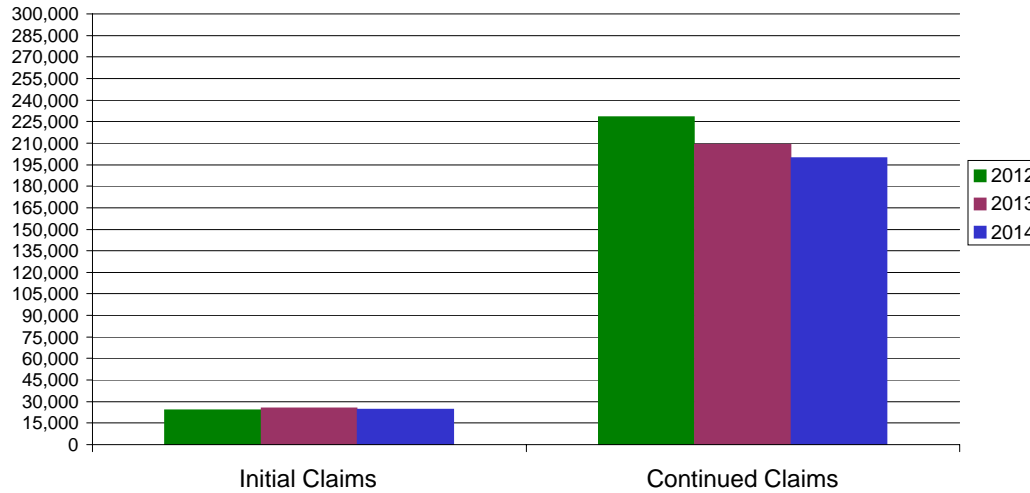
* Includes UI, EUC08, Workshare & Interstate Liable.

Equal Opportunity Employer / Program / Auxiliary aids and services available upon request to individuals with disabilities / TTY via RI Relay 711.

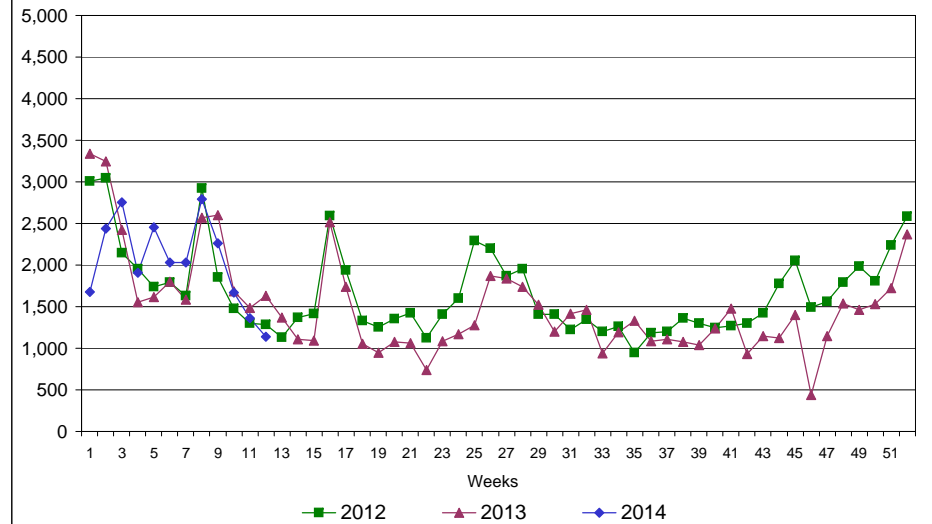
Rhode Island Department of Labor and Training

March 22, 2014

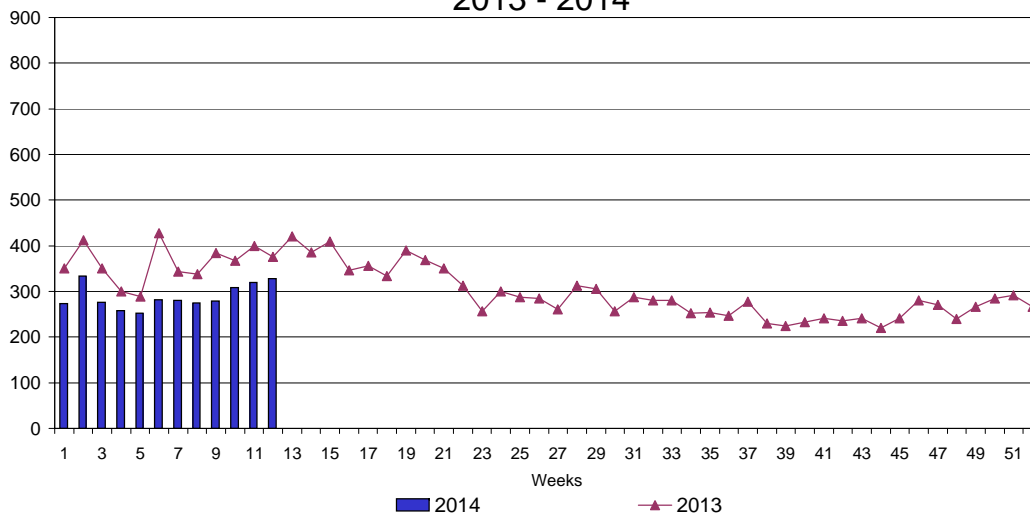
UI Claims Comparison Year to Date



UI Initial Claims 2012 - 2014



UI Exhaustions 2013 - 2014



TDI Claims Comparison Year to Date

