



Rhode Island Department of Labor and Training

Weekly Update of Claims Activity

Week Ending: March 29, 2014

Unemployment Insurance

Initial Claims – 904 initial claims were processed during the week ending 3/29/14, a decrease of 232 from the previous week, and a decrease of 462 from a year ago. The number of initial claims filed to date is down 5.5 percent from last year and up 0.6 percent from two years ago.

Continued Claims – 15,384 continued claims were processed during the week of 3/29/14, a decrease of 709 from the previous week and a decrease of 949 from a year ago. The number of continued claims filed to date is down 4.6 percent from last year and down 12.2 percent from two years ago.

Workshare – gives employers an alternative to layoffs by allowing employees to work reduced hours and collect a percentage of regular UI benefits to compensate for lost pay. This week, 1 initial claim and 688 continued claims were processed. There were not any layoffs prevented this week, as a result of Workshare.

Emergency Unemployment Compensation 08 – EUC08, which became effective July 6, 2008, provided federally funded benefits to eligible individuals who exhausted their UI claims. The EUC benefit program expired on December 28, 2013. DLT had asked individuals to continue to certify weekly in the event the program is reinstated by Congress. As of February 28, 2014 DLT is no longer requesting weekly certification.

Exhaustions – 324 individuals exhausted their regular payments this week, a decrease of 4 from the previous week and a decrease of 97 from a year ago.

Temporary Disability Insurance

Temporary Disability Insurance – 854 initial claims and 7,351 continued claims were processed for Temporary Disability Insurance. The average weekly TDI payment is \$442 per week. Rhode Island is currently paying an average of 10.8 weeks per new claim.

	<u>Initial Claims</u>			<u>Continued Claims</u>	<u>TOTAL - Initial and Continued Claims</u>			
	<u>Total</u>	<u>New</u>	<u>Additional</u>		<u>Current Week</u>	<u>Previous Week</u>	<u>Year Ago</u>	<u>Two Years Ago</u>
Total - All programs*	935	560	375	16,739	17,674	18,364	18,889	19,385
UI Claims	904	544	360	15,384	16,288	17,229	17,699	18,040
Change from:								
Previous Week	-232	-204	-28	-709	-941			
Year Ago	-462	-234	-228	-949	-1,411			
Two Years Ago	-223	-66	-157	-1,529	-1,752			
Interstate-Liable	30	15	15	667	697	734	554	596
Workshare	1	1	0	688	689	401	636	749
Workshare Equivalency	0	0	0	162	162	161	164	198
UI Exhaustions	-	-	-	324	324	328	421	540
TDI Claims	854	661	193	7,351	8,205	8,253	7,963	8,016
Change from:								
Previous Week	71	45	26	-119	-48			
Year Ago	168	92	76	74	242			

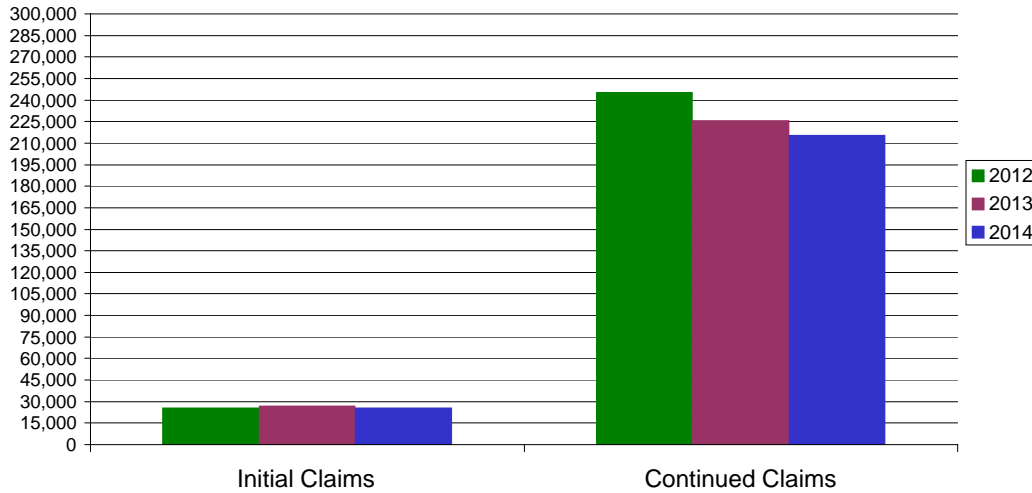
* Includes UI, EUC08, Workshare & Interstate Liable.

Equal Opportunity Employer / Program / Auxiliary aids and services available upon request to individuals with disabilities / TTY via RI Relay 711.

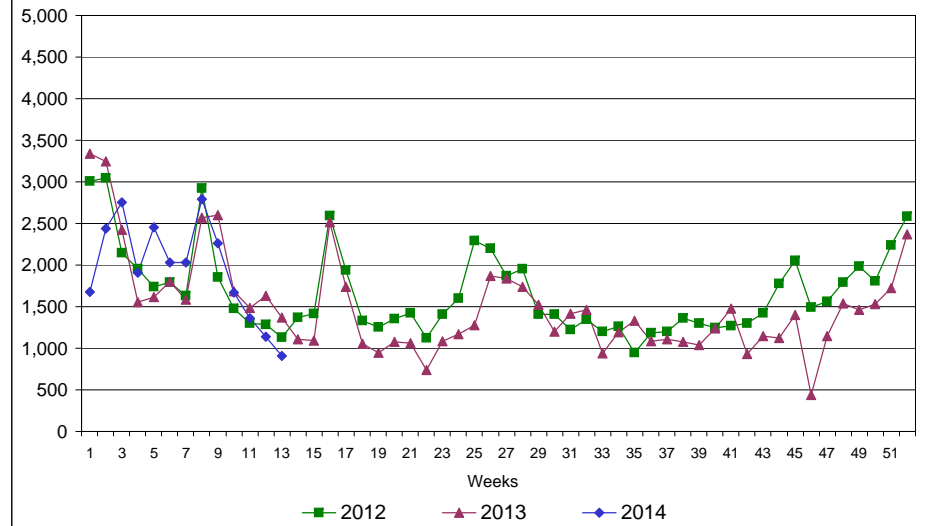
Rhode Island Department of Labor and Training

March 29, 2014

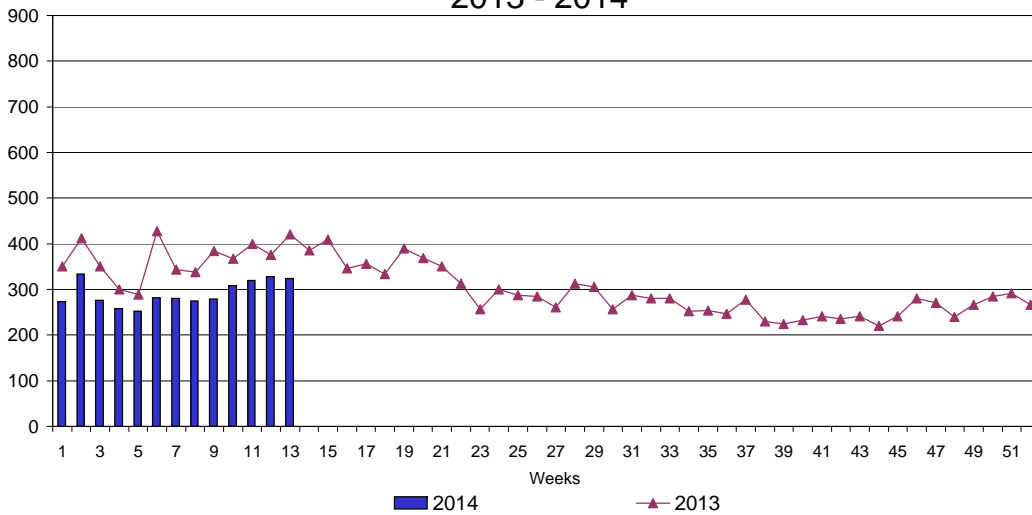
UI Claims Comparison Year to Date



UI Initial Claims 2012 - 2014



UI Exhaustions 2013 - 2014



TDI Claims Comparison Year to Date

