



Rhode Island Department of Labor and Training

Weekly Update of Claims Activity

Week Ending: April 5, 2014

Unemployment Insurance

Initial Claims – 962 initial claims were processed during the week ending 4/5/14, an increase of 58 from the previous week, and a decrease of 148 from a year ago. The number of initial claims filed to date is down 5.8 percent from last year and down 1.0 percent from two years ago.

Continued Claims – 14,570 continued claims were processed during the week of 4/5/14, a decrease of 814 from the previous week and a decrease of 1,083 from a year ago. The number of continued claims filed to date is down 4.7 percent from last year and down 12.0 percent from two years ago.

Workshare – gives employers an alternative to layoffs by allowing employees to work reduced hours and collect a percentage of regular UI benefits to compensate for lost pay. This week, 1 initial claim and 201 continued claims were processed. There were not any layoffs prevented this week, as a result of Workshare.

Emergency Unemployment Compensation 08 – EUC08, which became effective July 6, 2008, provided federally funded benefits to eligible individuals who exhausted their UI claims. The EUC benefit program expired on December 28, 2013. DLT had asked individuals to continue to certify weekly in the event the program is reinstated by Congress. As of February 28, 2014 DLT is no longer requesting weekly certification.

Exhaustions – 340 individuals exhausted their regular payments this week, an increase of 16 from the previous week and a decrease of 46 from a year ago.

Temporary Disability Insurance

Temporary Disability Insurance – 867 initial claims and 6,823 continued claims were processed for Temporary Disability Insurance. The average weekly TDI payment is \$446 per week. Rhode Island is currently paying an average of 10.9 weeks per new claim.

| | Initial Claims | | | Continued Claims | TOTAL - Initial and Continued Claims | | | |
|------------------------------|----------------|------|------------|------------------|--------------------------------------|---------------|----------|---------------|
| | Total | New | Additional | | Current Week | Previous Week | Year Ago | Two Years Ago |
| Total - All programs* | 996 | 638 | 358 | 15,369 | 16,365 | 17,674 | 17,926 | 19,369 |
| UI Claims | 962 | 618 | 344 | 14,570 | 15,532 | 16,288 | 16,763 | 17,397 |
| Change from: | | | | | | | | |
| Previous Week | 58 | 74 | -16 | -814 | -756 | | | |
| Year Ago | -148 | 14 | -162 | -1,083 | -1,231 | | | |
| Two Years Ago | -406 | -197 | -209 | -1,459 | -1,865 | | | |
| Interstate-Liable | 33 | 20 | 13 | 598 | 631 | 697 | 555 | 578 |
| Workshare | 1 | 0 | 1 | 201 | 202 | 689 | 608 | 1,394 |
| Workshare Equivalency | 0 | 0 | 0 | 55 | 55 | 162 | 175 | 357 |
| UI Exhaustions | - | - | - | 340 | 340 | 324 | 386 | 527 |
| TDI Claims | 867 | 680 | 187 | 6,823 | 7,690 | 8,205 | 7,661 | 8,134 |
| Change from: | | | | | | | | |
| Previous Week | 13 | 19 | -6 | -528 | -515 | | | |
| Year Ago | -145 | -185 | 40 | 174 | 29 | | | |

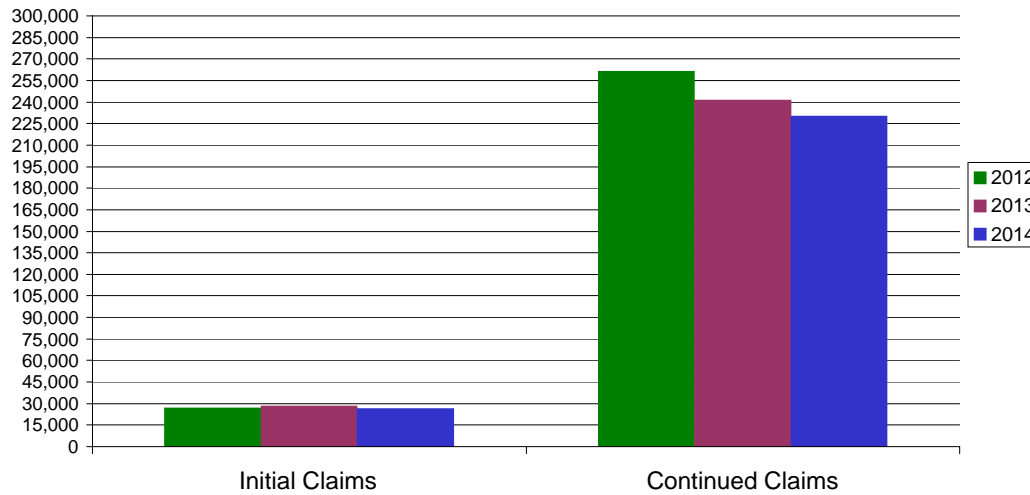
* Includes UI, EUC08, Workshare & Interstate Liable.

Equal Opportunity Employer / Program / Auxiliary aids and services available upon request to individuals with disabilities / TTY via RI Relay 711.

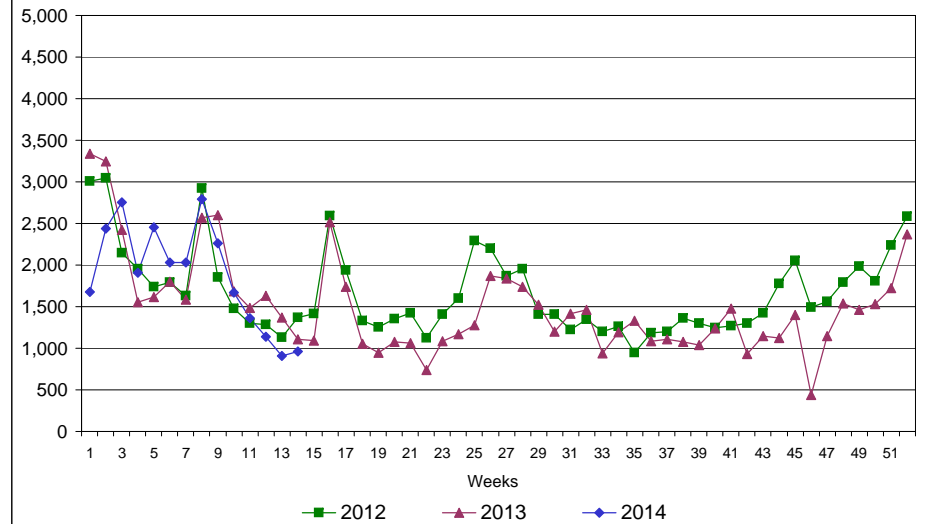
Rhode Island Department of Labor and Training

April 5, 2014

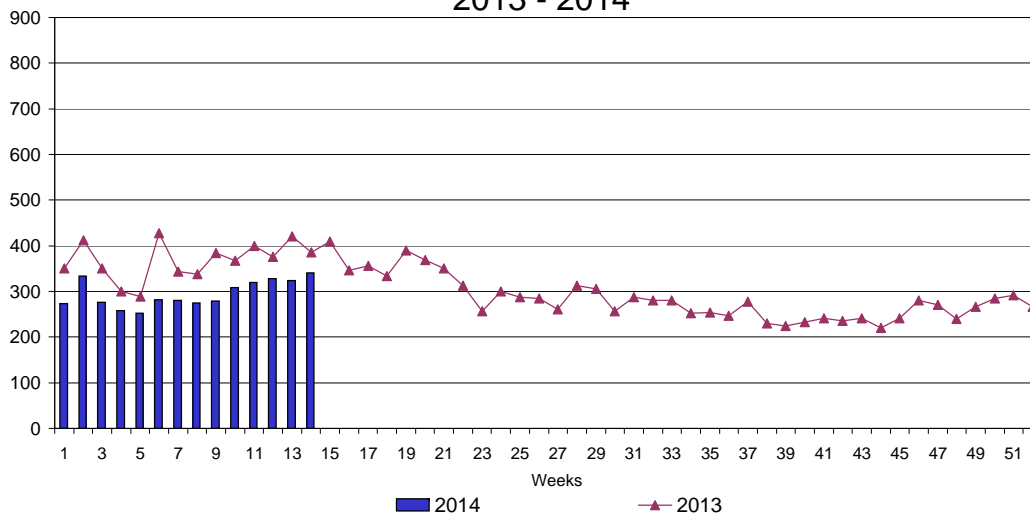
UI Claims Comparison Year to Date



UI Initial Claims 2012 - 2014



UI Exhaustions 2013 - 2014



TDI Claims Comparison Year to Date

