



## Rhode Island Department of Labor and Training

# *Weekly Update of Claims Activity*

*Week Ending: April 12, 2014*

### *Unemployment Insurance*

**Initial Claims** – 1,018 initial claims were processed during the week ending 4/12/14, an increase of 56 from the previous week, and a decrease of 78 from a year ago. The number of initial claims filed to date is down 5.9 percent from last year and down 2.4 percent from two years ago.

**Continued Claims** – 13,389 continued claims were processed during the week of 4/12/14, a decrease of 1,181 from the previous week and a decrease of 603 from a year ago. The number of continued claims filed to date is down 4.7 percent from last year and down 11.8 percent from two years ago.

**Workshare** – gives employers an alternative to layoffs by allowing employees to work reduced hours and collect a percentage of regular UI benefits to compensate for lost pay. This week, there were not any initial claims and 375 continued claims were processed. There were not any layoffs prevented this week, as a result of Workshare.

**Emergency Unemployment Compensation 08** – EUC08, which became effective July 6, 2008, provided federally funded benefits to eligible individuals who exhausted their UI claims. The EUC benefit program expired on December 28, 2013. DLT had asked individuals to continue to certify weekly in the event the program is reinstated by Congress. As of February 28, 2014 DLT is no longer requesting weekly certification.

**Exhaustions** – 366 individuals exhausted their regular payments this week, an increase of 26 from the previous week and a decrease of 43 from a year ago.

### *Temporary Disability Insurance*

**Temporary Disability Insurance** – 1,277 initial claims and 6,959 continued claims were processed for Temporary Disability Insurance. The average weekly TDI payment is \$447 per week. Rhode Island is currently paying an average of 10.7 weeks per new claim.

	Initial Claims			Continued Claims	TOTAL - Initial and Continued Claims			
	Total	New	Additional		Current Week	Previous Week	Year Ago	Two Years Ago
<b>Total - All programs*</b>	1,048	755	293	14,371	15,419	16,365	16,102	17,703
<b>UI Claims</b>	1,018	739	279	13,389	14,407	15,532	15,088	16,238
Change from:								
Previous Week	56	121	-65	-1,181	-1,125			
Year Ago	-78	101	-179	-603	-681			
Two Years Ago	-401	25	-426	-1,430	-1,831			
<b>Interstate-Liable</b>	30	16	14	607	637	631	556	532
<b>Workshare</b>	0	0	0	375	375	202	458	933
<b>Workshare Equivalency</b>	0	0	0	95	95	55	120	233
<b>UI Exhaustions</b>	-	-	-	366	366	340	409	598
<b>TDI Claims</b>	1,277	1,017	260	6,959	8,236	7,690	7,581	8,100
Change from:								
Previous Week	410	337	73	136	546			
Year Ago	716	571	145	-61	655			

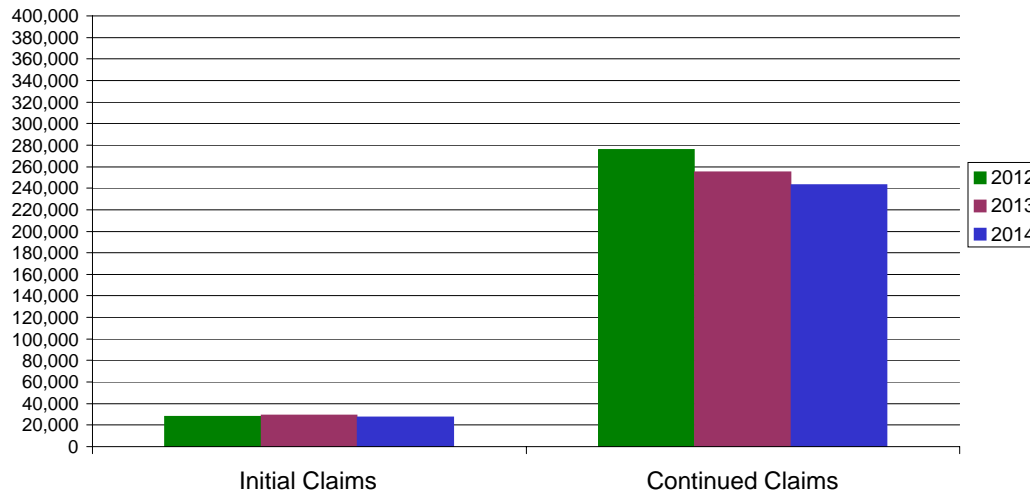
\* Includes UI, EUC08, Workshare & Interstate Liable.

Equal Opportunity Employer / Program / Auxiliary aids and services available upon request to individuals with disabilities / TTY via RI Relay 711.

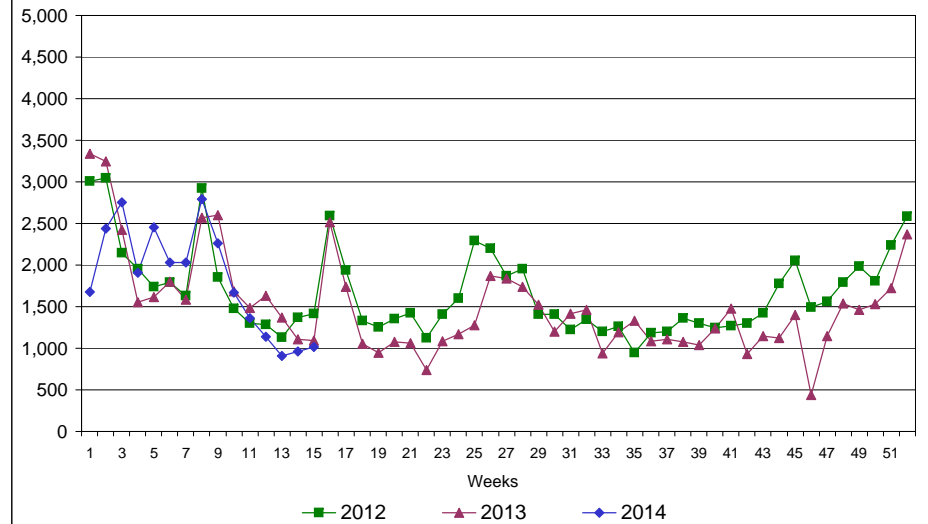
# Rhode Island Department of Labor and Training

## April 12, 2014

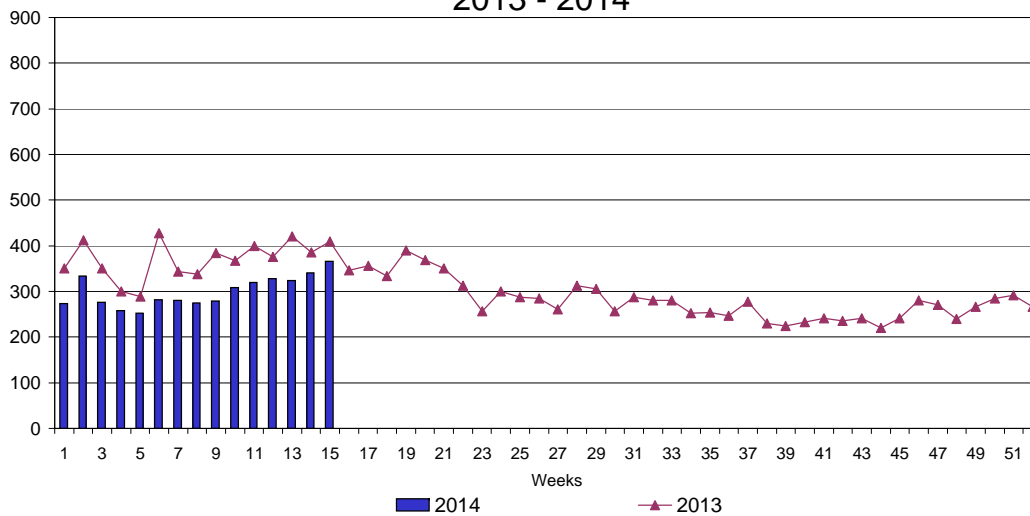
### UI Claims Comparison Year to Date



### UI Initial Claims 2012 - 2014



### UI Exhaustions 2013 - 2014



### TDI Claims Comparison Year to Date

