



Rhode Island Department of Labor and Training

Weekly Update of Claims Activity

Week Ending: April 19, 2014

Unemployment Insurance

Initial Claims – 1,201 initial claims were processed during the week ending 4/19/14, an increase of 183 from the previous week, and a decrease of 1,312 from a year ago. The number of initial claims filed to date is down 9.5 percent from last year and down 6.7 percent from two years ago.

Continued Claims – 12,244 continued claims were processed during the week of 4/19/14, a decrease of 1,145 from the previous week and a decrease of 609 from a year ago. The number of continued claims filed to date is down 4.7 percent from last year and down 12.0 percent from two years ago.

Workshare – gives employers an alternative to layoffs by allowing employees to work reduced hours and collect a percentage of regular UI benefits to compensate for lost pay. This week, 8 initial claims and 236 continued claims were processed. There were 2 layoffs prevented this week, as a result of Workshare.

Exhaustions – 306 individuals exhausted their regular payments this week, a decrease of 60 from the previous week and a decrease of 40 from a year ago.

Temporary Disability Insurance

Temporary Disability Insurance – 636 initial claims and 7,332 continued claims were processed for Temporary Disability Insurance. The average weekly TDI payment is \$449 per week. Rhode Island is currently paying an average of 10.8 weeks per new claim.

	Initial Claims			Continued Claims	TOTAL - Initial and Continued Claims			
	Total	New	Additional		Current Week	Previous Week	Year Ago	Two Years Ago
Total - All programs*	1,239	594	645	13,035	14,274	15,419	16,406	19,030
UI Claims	1,201	569	632	12,244	13,445	14,407	15,366	16,844
Change from:								
Previous Week	183	-170	353	-1,145	-962			
Year Ago	-1,312	-326	-986	-609	-1,921			
Two Years Ago	-1,390	-266	-1,124	-2,009	-3,399			
Interstate-Liable	30	17	13	555	585	637	549	523
Workshare	8	8	0	236	244	375	491	1,663
Workshare Equivalency	2	2	0	60	62	95	138	457
UI Exhaustions	-	-	-	306	306	366	346	501
TDI Claims	636	500	136	7,332	7,968	8,236	7,631	6,912
Change from:								
Previous Week	-641	-517	-124	373	-268			
Year Ago	-228	-211	-17	565	337			

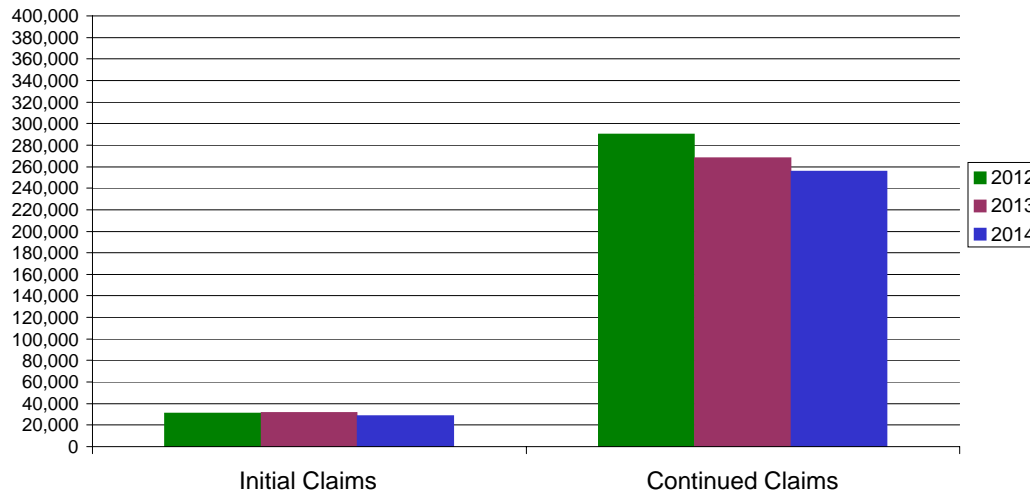
* Includes UI, EUC08, Workshare & Interstate Liable.

Equal Opportunity Employer / Program / Auxiliary aids and services available upon request to individuals with disabilities / TTY via RI Relay 711.

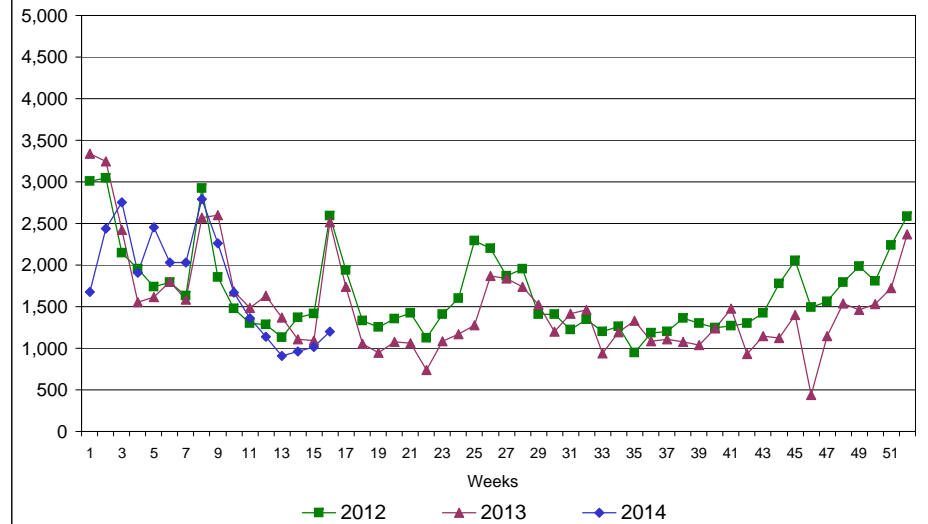
Rhode Island Department of Labor and Training

April 19, 2014

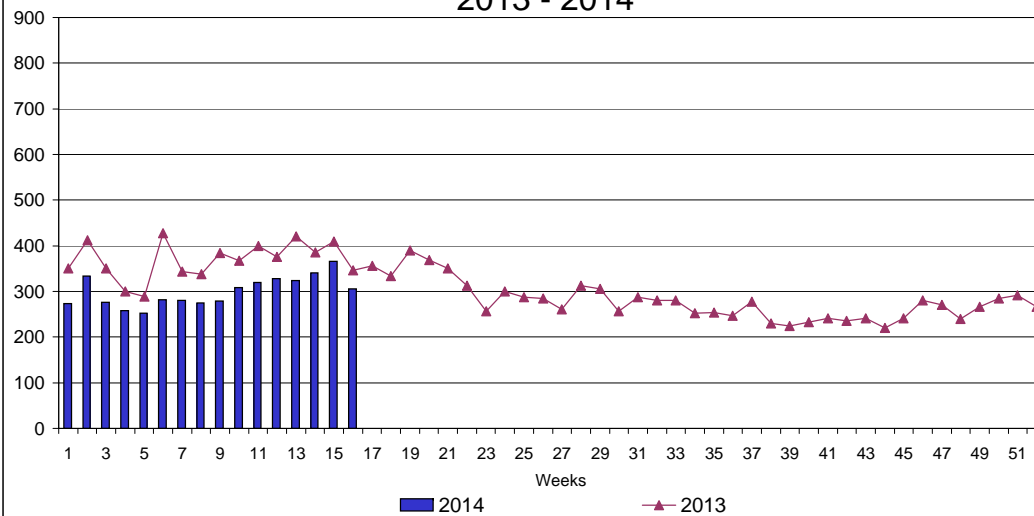
UI Claims Comparison Year to Date



UI Initial Claims 2012 - 2014



UI Exhaustions 2013 - 2014



TDI Claims Comparison Year to Date

